

# S2601 • 2 Position DPDT Spring Return Keyswitch

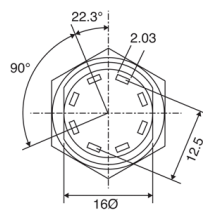
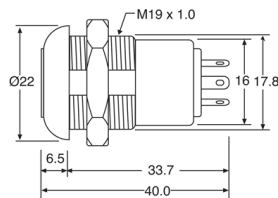
- **Electrical**

- Contact Rating: 4A 125VAC/28VDC, 2A 250VAC
- Contact Resistance: Below 10 million $\Omega$
- Insulation Resistance: 1 Billion  $\Omega$  Min.
- Dielectric Strength: 1000V RMS Min. sea level
- Electrical Life: 6000 make-and-break cycles at full load
- 

- **Materials**

- Lock Housing: Zinc Alloy die-casted nickel Plated.
- Cylinder: 4 Disc Tumblers Constructed, Zinc Alloy die-casted nickel Plated.
- Keys: Brass, Original Colour or Nickel Plated.
- Contacts: Super Hard Copper Alloy, Silver Plated.
- Mounting Nut: Zinc Alloy Die Cast, Nickel Plated.

\*Specifications are subject to change without notice.



LOCK CONFIGURATION (AS VIEWED FROM KEY END)



45° INDEXING

- ▲ Momentary
- Removeable
- Trapped

PANEL CUTOUT

