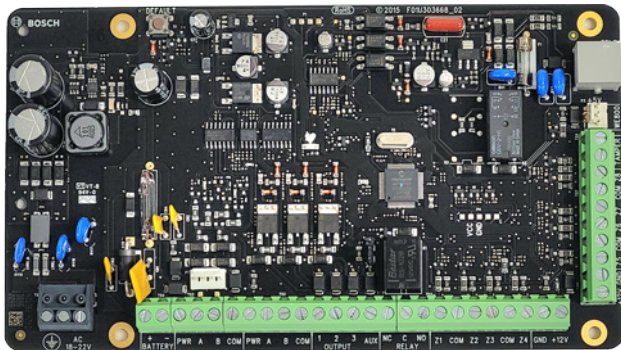


ICP-SOL4-P Control panel, 32-zone Solution 4000



ICP-SOL4-P control panel with door control is for small to medium residential and commercial applications.

System overview

With 32 fully programmable wired or wireless zones, up to 16 on-board the control panel and the additional 16 zones can be hardwired using the B228 module or RADION wireless receiver. In addition, 4 door zones can be added to the B901 door controller.

With support for up to four keypads and the ability to be split into two separate partitions, you have the flexibility of one security system that can act as two.

Functions

User interfaces

The control panel has the variety of codepad options, including LCD alphanumeric, LCD icon, and various touchscreen options that are simple to use.

Wireless

The control panel supports WE800EV2 or the option to integrate with the RADION range of wireless transmitters.

Door control

The control panel supports door commands of cycle, lock, unlock, secure and unsecure from the assigned codepad, A-Link Plus software or RSC+ app.

- ▶ 32 intrusion alarm zones
- ▶ 4 door zones
- ▶ 65 codes - 1 installer code, 64 user codes
- ▶ Easy operation with alphanumeric codepad and touchscreen codepad
- ▶ STAY / AWAY arming options

Communication

The control panel has available a range of communications extension modules that integrate directly with the control panel and provide options such as mobile communications via LTE networks, along with IP reporting through the internet. The IP module includes CSV-IP communications technology and makes the control panel fully NBN-ready /Fiber compatible with the majority of monitoring centers in Australia and New Zealand who can handle the IP communications from the control panel.

Remote Security Control Plus (RSC+) app

Remote Security Control Plus (RSC+) app allows users to control their security systems remotely from mobile devices such as phones and tablets. You can arm / disarm the control panel and control connected devices such as lighting and A/C, and select the events you want to receive push notifications.

Regulatory information

Australia	RCM AS/CA S002:2010
New Zealand	Telepermit
Europe	PCE - EN61000-3:2007/A1:2011 EN50130-4:2011

Parts included

Quantity	Component
1	Control panel PCBA
1	Hardware pack
1	Quick user guide

Technical specifications

Electrical

Primary	TF008 Plug Pack (only sold in Australia)
Secondary	12 VDC, 6.5Ah from rechargeable sealed lead/acid battery

Mechanical

Dimensions (H x W x D) (mm)	103 mm x 183 mm x 28 mm
Weight (g)	165 g

Environmental

Operating temperature (°C)	0 °C – 45 °C
Operating relative humidity, non-condensing (%)	10% – 95%

Communications

Communications	CID, SIA, Email*, Domestic Dialing, CSV-IP, Push Notification* *Requires B426-M IP Communications Module or B450-M Universal Communications Module
----------------	---

Warranty

Warranty	3 years
----------	---------

Ordering information

ICP-SOL4-P Control panel, 32-zone

Sold in Australia, New Zealand and APR regions.
Order number **ICP-SOL4-P | F.01U.418.606**

Accessories

IUI-SOL-TS5 TouchOne Mini 5"

Only sold in Australia
Order number **IUI-SOL-TS5 | F.01U.335.887**

IUI-SOL-TS7 TOUCHONE 7" CODE PAD SDI2

Only sold in Australia
Order number **IUI-SOL-TS7 | F.01U.303.249**

IUI-SOL-TEXT LCD alphanumeric keypad

LCD text keypad, two lines with each 18 characters
Order number **IUI-SOL-TEXT | F.01U.301.795**

IUI-SOL-ICON LCD icon keypad, 16-zone

Shows 8 zones, provides LCD, and provides a protective door
Order number **IUI-SOL-ICON | F.01U.301.794**

B228 SDI2 8-Input, 2-Output Expansion Module

For Solution 4000 control panels.
Order number **B228 | F.01U.334.443**

B308 Expansion module, SDI2, 8-output

Provides 8 programmable relays.
Order number **B308 | F.01U.397.025**

B426-M Ethernet communication module, mobile

Supports Ethernet communication for remote programming and mobile apps on AMAX and Solution Series control panels
Order number **B426-M | F.01U.332.307 F.01U.414.223**

B450-M Plug-in communicator interface, mobile

Supports cellular communication for remote programming and mobile apps on AMAX and Solution Series control panels
Order number **B450-M | F.01U.332.308 F.01U.416.881**

B901 Door Controller

Fully supervised, addressable SDI2/SDI bus device that allows access control integration for Bosch G and B Series Control Panels.
Order number **B901 | F.01U.323.803**

B520 Auxiliary power supply module, 2A 12V

Provides auxiliary power to 12 VDC devices or to SDI2 modules.
Order number **B520 | F.01U.172.941**

WE800EV2KIT WE800EV2 433MHZ RX WITH 2X4 BUTTON FOB

The kit includes 1 receiver and 2 keyfobs.
Order number **WE800EV2KIT | F.01U.271.805**

Software Options

ITS-ALINK-PLUS WINDOWS BASE A-Link Plus

Windows-based remote programming software for compatible control panels
Order number **ITS-ALINK-PLUS | F.01U.164.995**

Represented by:

Europe, Middle East, Africa:
Bosch Security Systems B.V.
P.O. Box 80002
5600 JB Eindhoven, The Netherlands
www.boschsecurity.com/xc/en/contact/
www.boschsecurity.com

Germany:
Bosch Sicherheitssysteme GmbH
Robert-Bosch-Platz 1
D-70839 Gerlingen
www.boschsecurity.com

North America:
Bosch Security Systems, LLC
130 Perinton Parkway
Fairport, New York, 14450, USA
www.boschsecurity.com

Asia-Pacific:
Robert Bosch (SEA) Pte Ltd, Security Systems
11 Bishan Street 21
Singapore 573943
www.boschsecurity.com/xc/en/contact/
www.boschsecurity.com