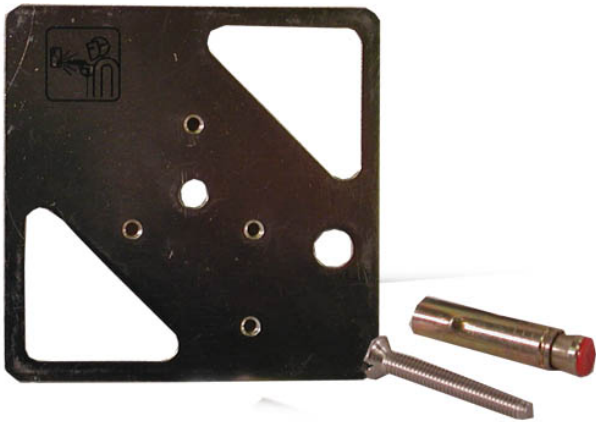




## ISN-GMX-P0 Mounting Plate



Mounting plate for a seismic detector. Weighs 0.27 kg (9.5 oz). Appropriate for mounting the seismic detector to steel or concrete surfaces. Screw or weld the mounting plate directly on an object.

### Ordering Information

#### ISN-GMX-P0 Mounting Plate

Mounting plate for a seismic detector. Weighs 0.27 kg (9.5 oz). Appropriate for mounting the seismic detector to steel or concrete surfaces. Screw or weld the mounting plate directly on an object.

#### ISN-GMX-P0