

CAT6 PATCH LEADS

Cabac Cat6 snag-less patchleads are designed and tested to ANSI/TIA-568-C.2 Performance standards and the ACMA requirements set out in Australian Standard AS/CA S008.

Available in a range of colours and lengths, these patchleads are made from 24AWG stranded bare copper conductors and feature a central crossweb separator to reduce crosstalk and improve performance.

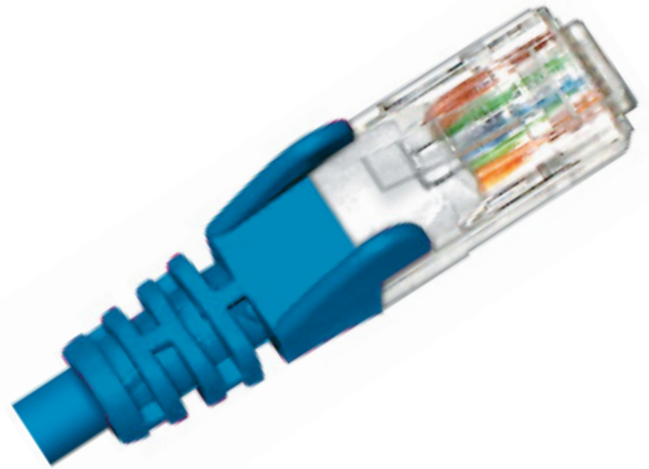
A molded strain relief snagless boot prevent accidental unplugging from equipment.

FEATURES

- RCM Compliant with ACMA and AS/CA S008 requirements
- Snagless boot prevents accidental unplugging from equipment
- Made from flexible 24AWG stranded cable
- Bare copper conductors
- Supports 10BASE-T, 100BASE-TX and 1000BASE-T networks
- Supports IEEE 802.3 Ethernet, Fast Ethernet and Gigabit Ethernet Standards

COMPLIANT STANDARDS

- ANSI/TIA-568-C.2 Category 6 Performance
- RCM CA/AS 2008:2010



SPECIFICATIONS

FEATURE	DESCRIPTION
Number of Pairs	4
Conductors	24 AWG (7/0.20) Stranded Bare Copper
Crossweb separator	Yes
Jacket Material	PVC
Outer Diameter	6.0mm (+/- 0.2mm) nominal
Connector Type	RJ45 Plug (8P8C)
Wiring Scheme	568A
Operating Temperature	- 20°C to +75°C



LENGTH (m)	BLUE	WHITE	YELLOW	BLACK	GREY	GREEN	RED	PURPLE	PINK	ORANGE	LIME GREEN
0.3	PLC6BL0.3	N/A	N/A	N/A	N/A	N/A	N/A	N/A	N/A	N/A	N/A
0.5	PLC6BL0.5	PLC6WH0.5	PLC6YL0.5	PLC6BK0.5	PLC6GY0.5	PLC6GN0.5	PLC6RD0.5	PLC6PU0.5	PLC6PK0.5	PLC6OR0.5	PLC6LM0.5
1	PLC6BL1	PLC6WH1	PLC6YL1	PLC6BK1	PLC6GY1	PLC6GN1	PLC6RD1	PLC6PU1	PLC6PK1	PLC6OR1	PLC6LM1
1.5	PLC6BL1.5	PLC6WH1.5	PLC6YL1.5	PLC6BK1.5	PLC6GY1.5	PLC6GN1.5	PLC6RD1.5	PLC6PU1.5	PLC6PK1.5	PLC6OR1.5	PLC6LM1.5
2	PLC6BL2	PLC6WH2	PLC6YL2	PLC6BK2	PLC6GY2	PLC6GN2	PLC6RD2	PLC6PU2	PLC6PK2	PLC6OR2	PLC6LM2
3	PLC6BL3	PLC6WH3	PLC6YL3	PLC6BK3	PLC6GY3	PLC6GN3	PLC6RD3	PLC6PU3	PLC6PK3	PLC6OR3	PLC6LM3
5	PLC6BL5	PLC6WH5	PLC6YL5	PLC6BK5	PLC6GY5	PLC6GN5	PLC6RD5	PLC6PU5	PLC6PK5	PLC6OR5	PLC6LM5
10	PLC6BL10	PLC6WH10	PLC6YL10	PLC6BK10	PLC6GY10	PLC6GN10	PLC6RD10	PLC6PU10	PLC6PK10	PLC6OR10	N/A
20	PLC6BL20	PLC6WH20	PLC6YL20	PLC6BK20	PLC6GY20	PLC6GN20	PLC6RD20	N/A	N/A	N/A	N/A

In support of our policy of continuous product improvement we reserve the right to change materials and specifications without notice. Drawings, where used, are not to scale. All dimensions are in millimetres and sizes given are approximate. Where possible, technical MSDS data sheets are made available on the website. All products should be installed and used in accordance with manufacturer's instructions provided. Warning: products may be the subject of registered designs and patents. Refer to website for terms and conditions on warranty.