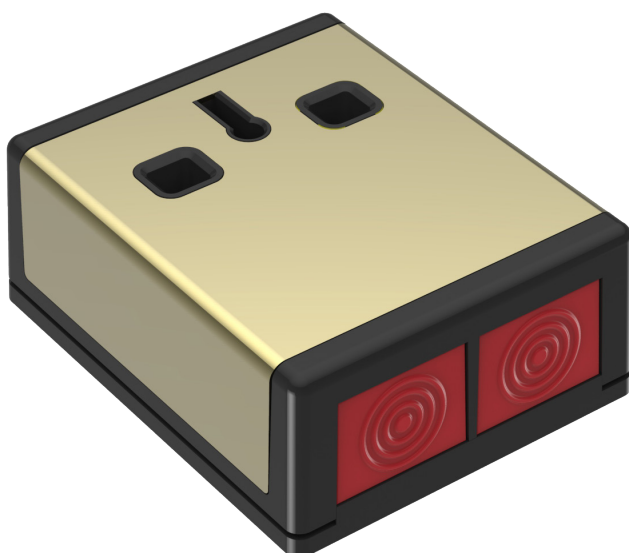


# PADP3/BS/BK

Brass Effect Double Push PA Button

**CQR**  
First choice for quality

Double push range of PA Buttons are suitable for use in Grade 3 Installations. Inside the traditional double push design are a selection of end-of-line resistors for the convenience of the installer.



- Latching / non-latching
- Selectable for Normally Open / Normally Closed
- Indicator to show activation
- Microswitch Alarm and Tamper
- Selectable End of Line Resistors
- Key Resettable
- Spare keys available

rev. 3-09/2020

## Product codes

Code	Description
PADP3/BS/BK	Brass Effect PA Button

## Technical data

Case Material	ABS or ABS /304 Grade Stainless Steel
Buttons	Acetal
Reset Key	Steel
Dimensions mm	75mm x 62mm x 29.5mm
Operation	2 button, latching / no latching
Reset Method	Key
Switch Rating	3A 50Vdc changeover
Anti Tamper	Normally closed tactile 24v DC at 1A max
Standards	EN50131-1:2006 + A1:2009 Grade 3
Environmental Class	II



[www.cqr.co.uk](http://www.cqr.co.uk)

[info@cqr.co.uk](mailto:info@cqr.co.uk)

Sales: +(0)151 606 1000 Tech: +(0)151 606 6311

CQR Security Ltd, 125 Pasture Road, Moreton, Wirral, CH46 4TH, UK

