

DH-PFB220C

Ceiling Mount Bracket



- Built of aluminum alloy.
- Suitable for a variety of cameras and is elegant.
- Standard ports that work with the adapter plate to facilitate the installation of eyeball cameras and small domes.



Aesthetic Design

Easy Installation

Series Overview

The Mounting Bracket works with front-end services, supporting installation methods such as wall mount, pole mount, corner mount and in-ceiling mount. Select brackets are designed to suit complex scenes, making them convenient to use in environments with high temperatures, humidity, frequent vibrations, and in locations that are highly corrosive. These highly reliable brackets are easy to install and use.

Scene

Ideal for mounting cameras, it works in temperatures ranging from -40°C to $+60^{\circ}\text{C}$ (-40°F to $+140^{\circ}\text{F}$) and in environments with relative humidity of less than 90%.

Technical Specification

Structure

Casing Material	Aluminum alloy
Product Dimensions	$\Phi 128.8\text{ mm} \times 767.0\text{ mm}$ ($\Phi 5.07'' \times 30.2''$)
Appearance Color	White
Net Weight	0.92 kg (2.03 lb)
Gross Weight	1.35 kg (2.98 lb)
Load bearing	2.0 kg (4.41 lb)
Installation	Ceiling mount
Packaging Dimensions	$825\text{ mm} \times 185\text{ mm} \times 172\text{ mm}$ ($32.48'' \times 7.28'' \times 6.77''$) (L \times W \times H)
Applicable Model	Please see "Camera Accessories Selection"

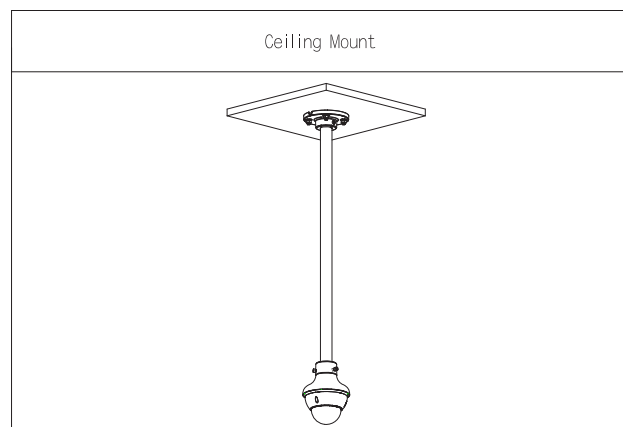
Environment

Operating Temperature	-40°C to $+60^{\circ}\text{C}$ (-40°F to $+140^{\circ}\text{F}$)
Operating Humidity	< 90% (RH)
Storage Temperature	-40°C to $+60^{\circ}\text{C}$ (-40°F to $+140^{\circ}\text{F}$)
Storage Humidity	10%–90% (RH)
Anti-corrosion Level	Basic Protection

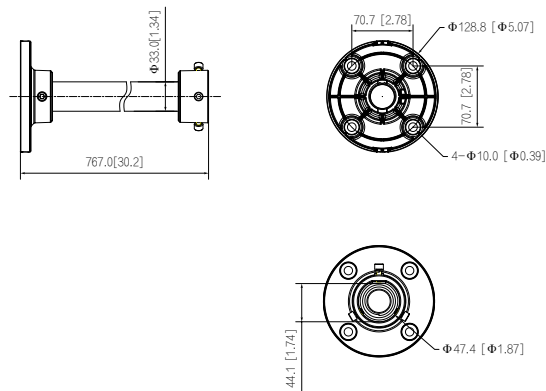
Ordering Information

Type	Model	Description
Camera Mount	DH-PFB220C	Ceiling Mount Bracket

Installation



Dimensions (mm[inch])



Package Information

- Ceiling mount bracket × 1
- S5.0 wrench × 1