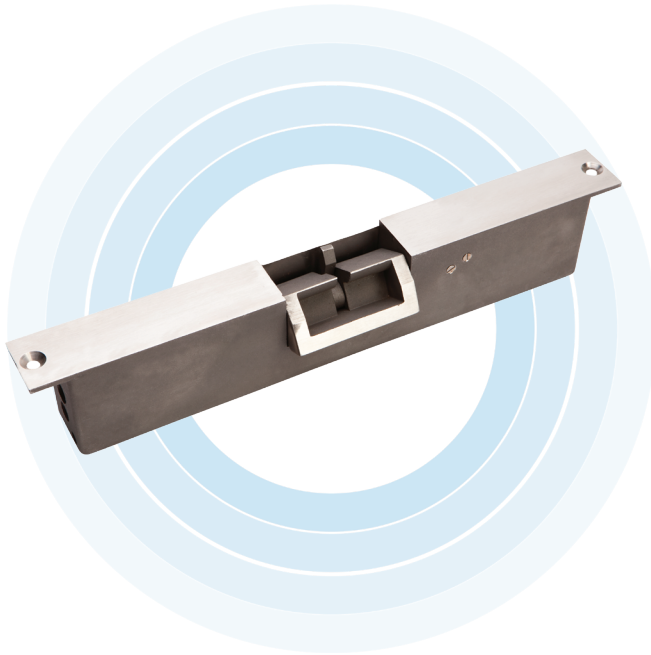


FES110 SERIES

ELECTRIC DEADLOCK STRIKE – HIGH SECURITY



The FES110 Series electric deadlock strike's release mechanism has been designed to provide door access control while maximising security to a door assembly, fitted with square bolt deadlocks.

The FES110 monitors both door lock tongue and internal locking of the strike. The device is multi-voltage, accepting 12VDC-30VDC and has a 2 year warranty.

Technical Details

Part No.	FES110-PTL	FES110-PTO
Function	Power To Lock (PTL)	Power To Open (PTO)
Holding Strength	Up to 500kg	
Voltage/Current	12-30 VDC (Multi-voltage) 12V 600mA dropping to 220mA, 24V 350mA dropping to 12mA	
Approvals	Up to 2-hour fire rating (contact Allegion for more details)	
Monitoring	Lock Status Sensor (LSS) and Door Status Sensor (DSS)	
Dimensions	L= 306 x W= 32 x H= 58mm	

Product Features

- Stainless steel faceplate and keeper
- Holding strength of up to 500kg
- 2 year warranty
- Multi-voltage 12VDC-30VDC (has to be specified)
- Lock Status Sensor (LSS) and Door Status Sensor (DSS) monitoring
- PTO and PTL version available

Product Dimensions

