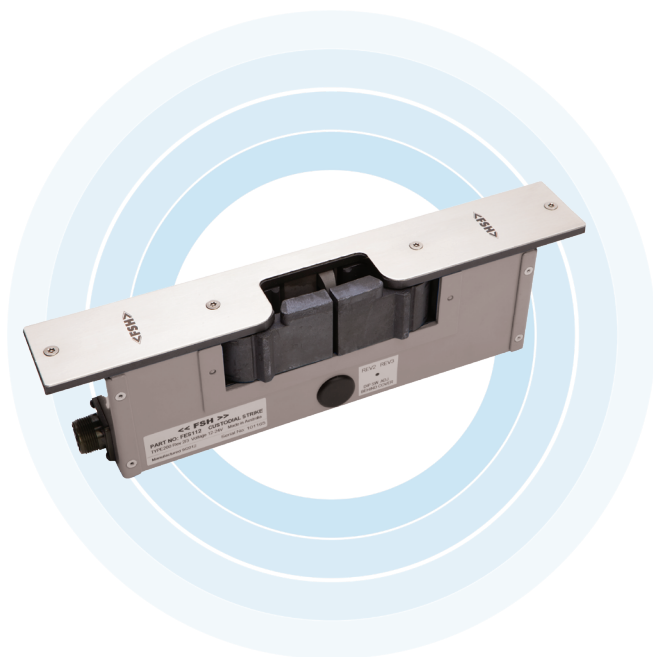


# FES112 SERIES

## ELECTRIC STRIKE – HIGH SECURITY



The FES112 is purposely designed for heavy duty, high security applications where superior holding strength is required. Specifically suited for detention centres and correctional facilities where safety for all occupants is necessary.

The strike works in conjunction with a heavy duty double throw deadlock. With holding forces in excess of 1000kg, multiple monitoring functions and multi-voltage regulation, the FES112 is the perfect locking device for a variety of high security installations and retrofit high security projects. The device is supplied with a series 2 to series 3 simple change over switch.

Series 3 configuration provides the device with door position monitoring. In this configuration, the FES112 cannot be secured until the door is in the closed position and the lock monitoring tongue is depressed.

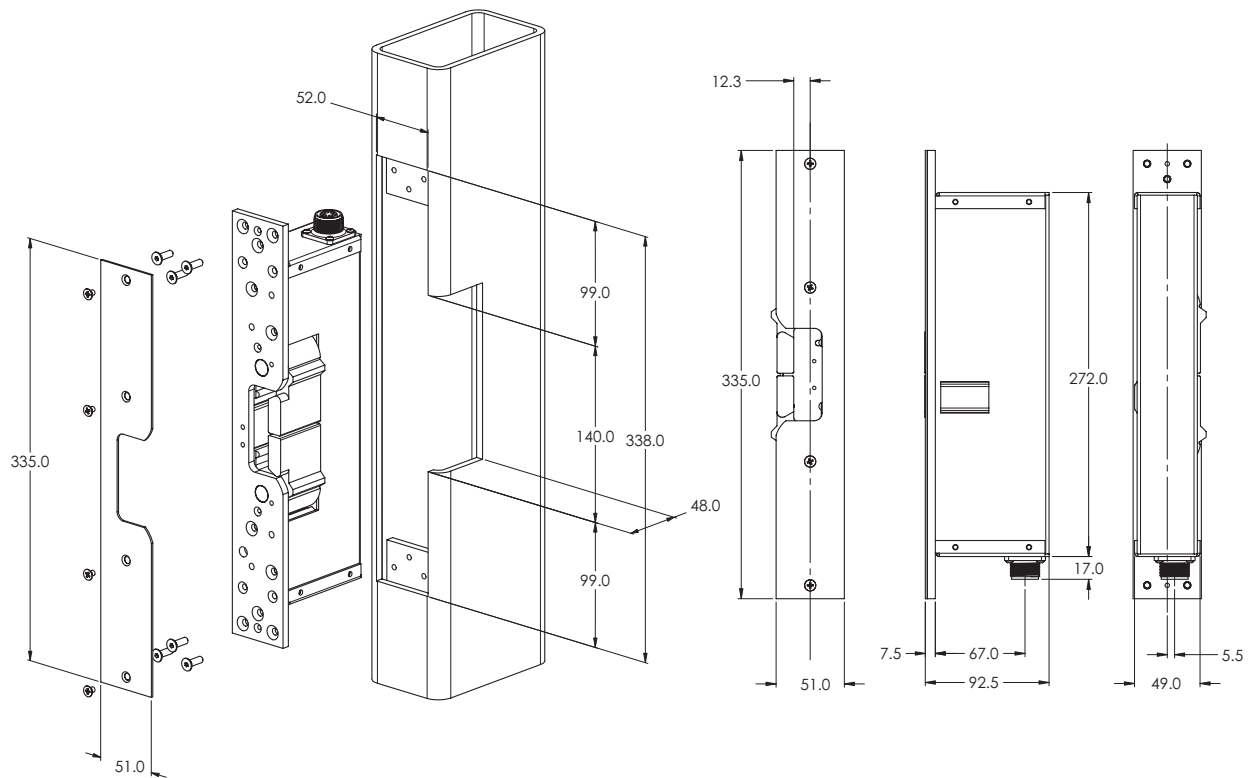
### Technical Details

Part No.	FES112
Function	Power To Open (Fail Secure)
Holding Strength	Exceeds 1000kg
Voltage/Current	Multi Voltage 12-30VDC 1.5A @ 12VDC. 0.75A @ 24VDC
Monitoring	Strike Jaws Door Lock Bolt Status Sensor Door Position Reed Switch Anti-Tamper Sensor (strike plate removed)
Temperature Range	-20°C to +60°C
Lock Dead Bolt Dimension	Fully extended = 33-36mm Width = 10-17mm Height = 57-59mm

### Product Features

- Ultra high holding force exceeds up to 1000kg
- Full monitoring (strike jaws, lock position, door position and cover plate)
- Multi Voltage operation 12-30VDC
- Smart Electronics, one lock for several applications
- Fail Secure, Power To Open (PTO) operation
- Body, high grade tooling steel hardened to 60 Rockwell
- Jaws, Molybdenum coated hardened steel
- Stainless steel faceplate and keeper
- 2 year warranty

## Product Dimensions and Installation



## Product Code & Accessories

Part No.	Product Description
FES112	HIGH SECURITY DEADBOLT STRIKE FES112 SMART ELECTRONICS SERIES 2/3 SELECTABLE