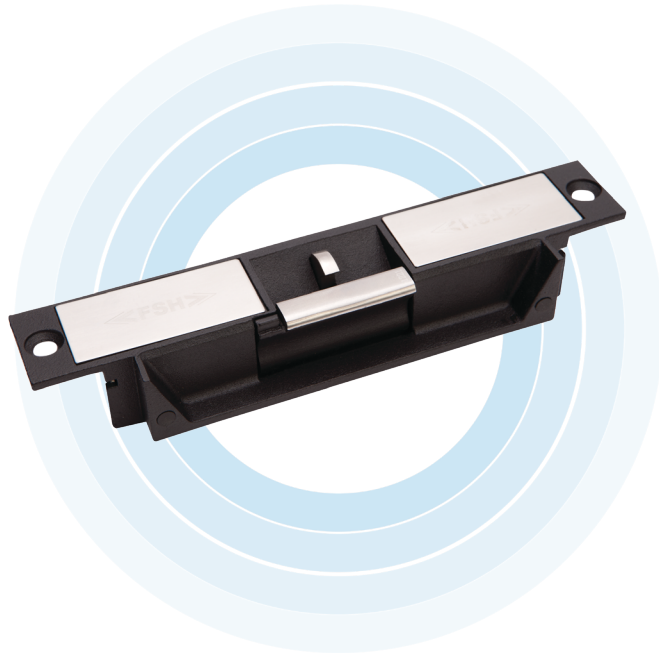


# FES90M-P

## HIGH SECURITY ELECTRIC STRIKE



The patented FES90M-P motorised high security electric strike is a revolutionary electric locking solution. The high pre-load /side-load tolerance, and minimal energy consumption in Sleep Mode, makes this an economic security solution.

The strike accepts voltages from 10 to 30VDC, is pre-drilled for extension lips and has a unique Power To Lock (PTL) / Power To Open (PTO) field interchangeable function.

The strike consumes current less than 300mA @ 12VDC at full 35kg pre-load only during locking and unlocking action. In the locked or unlocked state (Sleep Mode), the electric strike consumes less than 15mA @ 12VDC.

The FES90M-P provides two forms of monitoring:

- Lock Status Sensor (LSS)
- Door Status Sensor (DSS)

FES90M-P comes with a 10mm strike lip as standard.

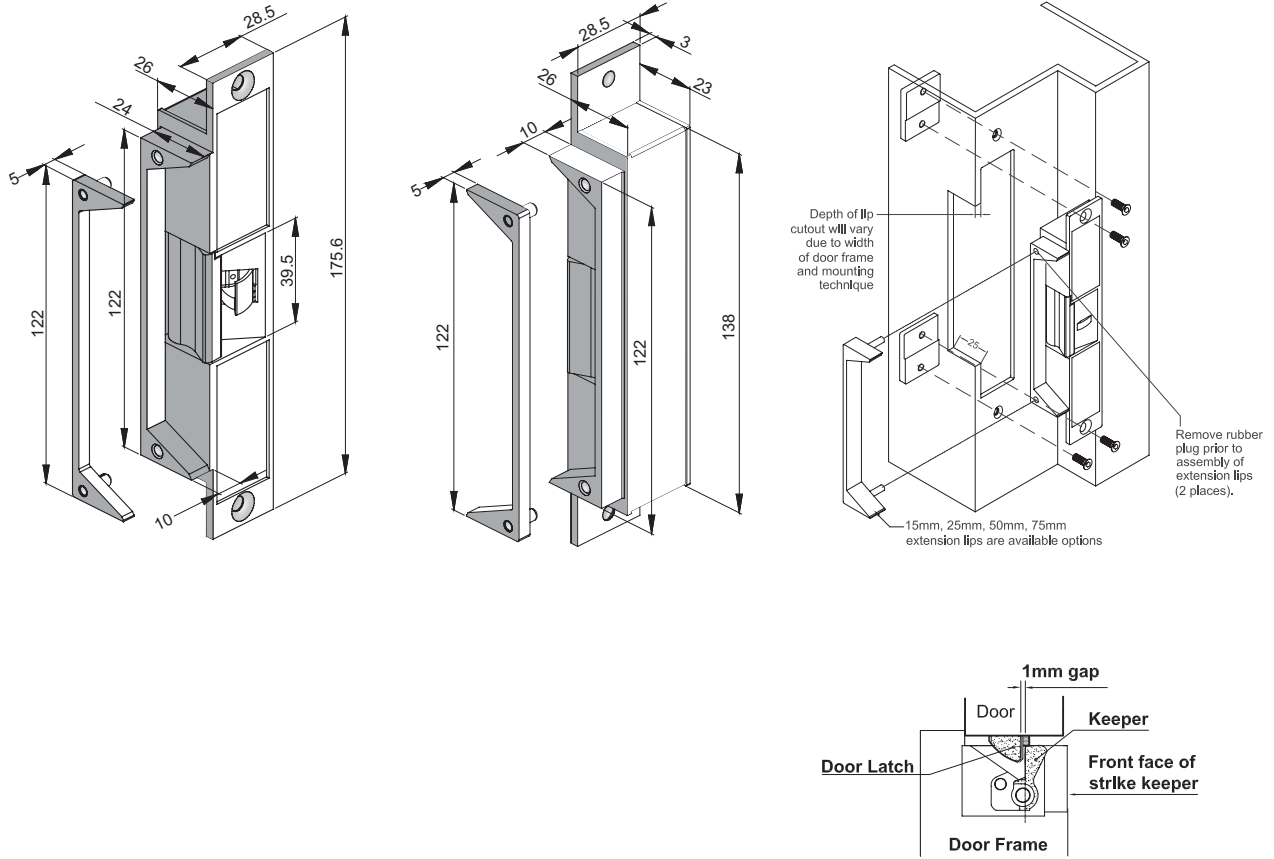
### Technical Details

Part No.	FES90M-P
Function	Mortice Mount, Power To Lock (PTL) / Power To Open (PTO) field interchangeable, 35kg of Pre-Load capability
Holding Strength	Up to 1300kg Tested to 1.5 million full 35kg pre-load cycles
Voltage/Current	Multi Voltage 10-30VDC Action Mode: 300mA@12VDC at full 35kg pre-load only during locking and unlocking action Sleep-Mode: 15mA @ 12VDC in locked or unlocked mode
Approvals	Up to 4-hour fire rated in accordance with AS1905.1:2015 (contact Allegion for more details) CE/UL SCEC Approved (SCEC approved version only)
Monitoring	LSS - Status Sensor of the internal locking mechanism DSS - Door Status Sensor, Door latch engaged within strike keeper
Temperature Range	-20°C to +60°C

### Product Features

- Releases with up to 35kg of pre-load / side-load
- Motorised locking device
- Durability tested to 1.5 million full pre-load cycles of 35kg
- Multi voltage from 10 to 30VDC
- Sleep Mode Current less than 15mA@12VDC
- Fully monitored including Reed Switch for door position
- Pre-drilled for extension lips
- Up to 1300kg holding strength
- 5 year warranty
- Guaranteed shock/hammer resistant
- CE/UL

## Product Dimensions and Installation



## Product Codes & Accessories

Part No.	Product Description
FES90M-P	HIGH SECURITY ELECTRIC STRIKE WITH PRE-LOAD CAPABILITIES AUSTRALIAN FOOTPRINT MONITORED 10MM LIP
FES20-EL15	FES20 EXTENSION LIP 15MM
FES20-EL25	FES20 EXTENSION LIP 25MM
FES20-EL50	FES20 EXTENSION LIP 50MM
FES20-EL75	FES20 EXTENSION LIP 75MM
FES20-REBATE	REBATE KIT FOR FES20 SERIES AND FES90MP (STAINLESS STEEL)