

# CPE12

5km Point to Point Outdoor CPE

# CPE12

## 5km Point to Point Outdoor CPE

---

### Products Description

CPE12 5GHz Long Range Outdoor CPE is designed to WISP CPE solutions and long distance wireless network solutions for video surveillance and data transmission. It features with 14dBi directional antenna to provide an efficient way to pick up and maintain a stable signal for a wireless network. Adopt of auto-bridging technology,two CPE can connect to each other automatically to make it easy to setup.



## Key Feature

---

- 5GHz 11n 300Mbps.
- 14dbi directional antenna.
- IP65 waterproof enclosure.
- 6000V Lightning Protection.
- AP, Station, WISP operating mode supported.
- Up to 60 meters of flexible deployment with included PoE adapter .

## Product Features

---

### 5km+ transmission Range

CPE12 adopts of independent power amplifier and 14dBi directional antenna to provide an efficient way to pick up and maintain a stable signal for a wireless network up to 5km.

### Auto-bridge For Two Device

CPE12 adopts of auto-bridge technology, two cpe can connect to each other when you power on them face to face. It is very easy to setup for CCTV surveillance and data .

### Super channel-Extended Frequency

CPE12 adopt of Qualcomm AR9344 chipset and special software mechanism optimization for radio driven architecture to offer extended frequency support. This feature is designed to help users get out of the congested, unlicensed 5GHz band and into clean spectrum.

## Product Features

---

### IMAX-IP-COM TDMA proprietary protocol

IMAX is IP-COM TDMA (Time Division Multiple Access) proprietary protocol to improve performance and capacity for wireless WISP outdoor application scenarios. In outdoor environment, the CPE use highly directional antennas to connect to the Basestation from distances that can span several kilometers. the CPE can't sense each other, they become "hidden nodes" and cannot coordinate access to the wireless channel. Thus the Basestation experiences frequent collisions from stations transmitting simultaneously. As the network scales, these collisions build up exponentially, increasing latency and lowering throughput.

With IMAX, it coordinate all the data transmission and allocates time to active clients to provide greater noise immunity performance when compared to the conventional 802.11 CSMA/CA (Carrier Sense Multiple Access / Collision Avoidance) protocol.

### Multiple Application Scenarios

#### Long-Distance Wireless Connection

One work as AP mode and another work as Station mode to create a long distance wireless connecton for video surveillance and data transmission.

#### WISP(Client+Router) Mode

Wirelessly connect to WISP station/hotspot to share Internet to local wireless and wired network.

### Professional Outdoor Design

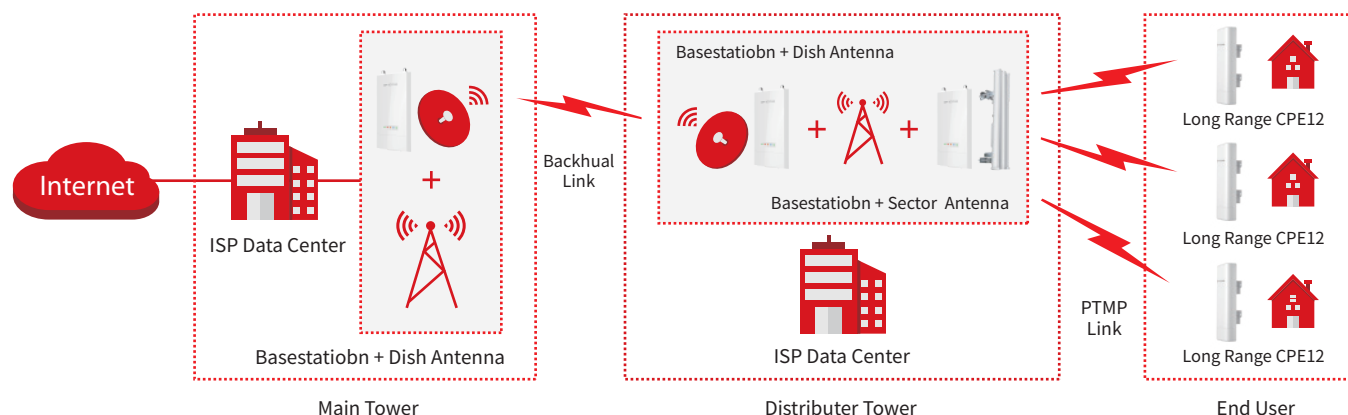
Equipped with IP65 waterproof enclouse and high quality hardware design, CPE12 can work in various weather conditions, such as sunshine, rainfall or extremely low/high temperature environment.

### Easy to Setup and Manage

CPE12 comes with a centralized management software that helps users easily to manage all the devices in the network from a single PC-CPE Controller.

## Application Scenarios

CPE12 5GHz Long Range Outdoor CPE is designed to WISP CPE solutions and long distance wireless network solutions for video surveillance and data transmission. It features with 14dBi directional antenna to provide an efficient way to pick up and maintain a stable signal for a wireless network. Adopt of auto-bridging technology, two CPE can connect to each other automatically to make it easy to setup.



## Related Product



AP255

- \* 2.4GHz 11n 300Mbps
- \* Two 10/100Mbps LAN ports
- \* Compliant with PoE 802.3af
- \* Vlan tagging for multi SSID
- \* 86 Type wall mount junction box design
- \* Centralized managed by AC1000/AC2000/AC3000



AP265

- \* 11AC dual band 1167Mbps
- \* Two 10/100Mbps LAN port
- \* Compliant with PoE 802.3af
- \* VLAN tagging for multi SSID
- \* 86 Type wall mount junction box design
- \* Centralized managed by AC1000/AC2000/AC3000



AC2000

- \* Easy to configure, manage and monitor Aps
- \* Maximum AP managed number up to 512
- \* Remote manage multi branch AP and AC
- \* Built-in captive portal server and customized welcome page
- \* Access device type and customer behavior statistic



M50

- \* Multi WAN Load Balance
- \* Captive Portal/PPPoE Server
- \* Smart bandwidth control
- \* PPTP/L2TP/IPSec Server
- \* Built-in AP Controller to capable to mange 16 APs

# Specifications

## Product Information

Model	CPE12
Dimensions	270*94.86*67.5mm
Deployment	Pole Mount/Wall Mount
Application Scenarios	WISP CPE, Data transmission and Long range video surveillance

## Hardware Features

Frequency Range	5GHz
Compliant Standards	IEEE 802.11a/n
Private TDMA Protocol	iMAX
Maximum Wireless Rate	300Mbps
Interfaces	1*10/100Mbps Ethernet Port
Antennas Gain	14dbi
Antenna Beamwidth	Horizontal: 30° Vertical: 30°
Reset Button	1
DC Jack	1
Power Consumption	8.5W
Waterproof Level	IP65
LED indicator	PoE/LAN,LED1,LED2,LED3
Power Method	24V0.5A Passive PoE
Lightning Protection	6000V
Passive PoE	Passive power over ethernet via PoE/LAN (+4,5pins; -7,8pins) Voltage range: 21-25V DC
Receiver sensitivity	MCS0: -96dbm MCS7: -72dbm

## Software Features

Operating mode	AP/Station/WISP/P2MP/WDS Repeater/Router
Enable/Disable Wireless Radio	Support
SSID Hidden	Support
Wireless Client isolation	Support
SSID Isolation	Support
Channel Bandwidth	10/20/30/40MHz
Client Limitation For SSID	Support
Wireless Access Control	Support

# Specifications

Weak Signal Client Limitation	Support
Transmission Power	Adjustable power by 1dBm
WMM Capable	Support
APSD Capable	Support
Wireless Security	64/128 WEP,WPA-PSK,WPA2-PSK,WPA&WPA2-PSK,WPA,WPA2
Transparent Bridge	Support
VLAN Tagging for SSID	Support
DHCP Server	Support
VPN Pass-Through	PPTP,L2TP
Remote Web access	Support
Schedule Reboot	Support
Page Timeout	Support
Ping Watchdog	Support
Dyndns	noip, dyndns.org
Network Diagnoses	Ping, Traceroute, Signal Scan
Time&Date Setting	Support
Firmware upgrade	Support
Backup/Restore Configuration	Support
Username Managerment	Support
System Log	Support
Managed By Controller	PC Software -- CPE Controller
<b>Others</b>	
Package Contents	1*5km Point to Point Outdoor CPE CPE12 1*PoE Power Adapter 1*Quick Installation Guide
Operating Temperature	-30°C ~ 60°C
Storage Temperature	-40°C ~ 70°C
Operating Humidity	10%~90% non-condensing
Storage Humidity	10%~90% non-condensing
Default login IP	192.168.2.1
Default Login Username	admin
Default Login Password	admin
Certifications	FCC/CE/RoHS

**IP-COM**  
World Wide Wireless

**IP-COM NETWORKS CO.,LTD.**

Tower E3, No.1001, Zhongshanyuan Road,  
Nanshan District, Shenzhen, China. 518052  
Service: [info@ip-com.com.cn](mailto:info@ip-com.com.cn)  
Inquiry: [marketing@ip-com.com.cn](mailto:marketing@ip-com.com.cn)  
Tel: +86-755-27653089