

# MML2400 SERIES

Mechanical Magnetic Locking Device - Outward Opening Doors

## MML2400 DESCRIPTION

The **LOX MML** Series fully monitored locking device is an innovative alternative to traditional Electro Magnetic Locks.

A clever combination of magnetic and mechanical locking components makes the MML a locking device with superior holding force of up to **1000kg**, whilst being 75% smaller than a standard 600kg Electro Magnetic Lock.

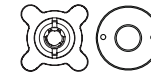
70kg side pressure (pre-load) capability on the door, a smart "Early Warning Alarm" security function and a low current draw rating complete this clever product.

The MML Lock is not recommended to be used on doors above 2400mm height.




**MML2400**  
MONITORED SINGLE DOOR MECHANICAL MAGNETIC LOCK  
OUTWARD OPENING DOORS

**1000KG MML PIN LOCK**



BEARING LOCK ARMATURE PIN

## SPECIFICATIONS

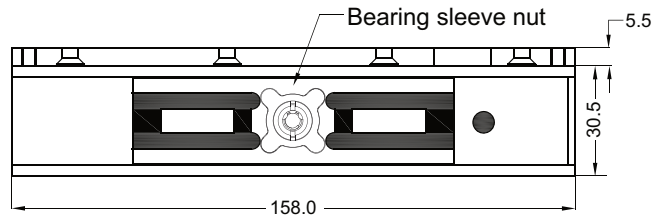
MML2400	SINGLE MECHANICAL MAGNETIC LOCKING DEVICE - OUTWARD OPENING DOORS
HOLDING STRENGTH	UP TO 1000KG, TESTED TO 750 THOUSAND CYCLES
VOLTAGE/CURRENT	DUAL VOLTAGE 12/24VDC 12VDC = 350mA 24VDC = 175mA
APPROVALS	UP TO 4 HOUR FIRE RATED TO A.S STANDARD, CE & C-TICK 
LSS MONITORING	LSS LOCK STATUS SENSOR (HALL EFFECT)
DSS MONITORING	DOOR STATUS SENSOR (REED SWITCH)
LED LIGHT STATUS	LED LIGHT STATUS INDICATES LOCKED OR UNLOCKED STATUS
ENVIRONMENTAL	OPERATIONAL TEMPERATURE RANGE - 20 DEG. C TO 60 DEG. C.



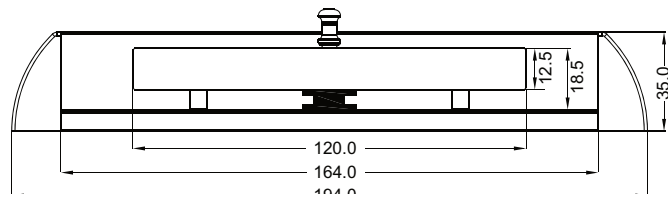
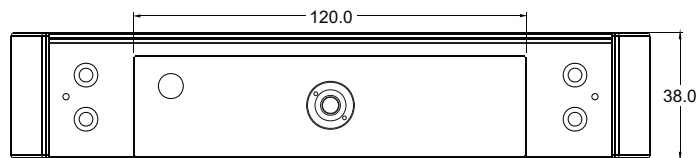
# MML2400 SERIES

Mechanical Magnetic Locking Device - Outward Opening Doors

## PRODUCT DIMENSIONS



Armature Plate & Anti-Tamper



Dimensions (mm)

## MML2400 FACTS

- 75% smaller than traditional 600kg holding force magnets
- Holding force of up to 1000kg
- Unlocks under side load of up to 70kg
- Dual-Voltage 12/24VDC reduced power consumption 24VDC/175mA
- 5 year warranty | 1 year warranty for electronic components
- Up to 4 hour fire rated
- Full monitoring Lock Status Sensor (LSS) and Door Status Sensor (DSS)
- Early Warning Security Alarm (EW)

## ACCESSORIES



### AMGB24-12

LOX GLASS DOOR U- BRACKET

**LOX**  
LOCKING

LOX LOCKING PTY LTD | [www.loxlocking.com.au](http://www.loxlocking.com.au)

**LOX**<sup>®</sup>