



garland

With Garland, you are always well connected.™

# Data Racks & Accessories Catalogue



DISTRIBUTED BY



Express  
madison



## About Us.

Garland Cables was established in Melbourne in 1972, and has been a well-known and respected manufacturer of quality cables for over 50 years. With an extensive range of communications, coaxial, data, security, telephone, instrumentation, and fibre cables, Garland provides the backbone for many critical networks throughout Australia.

When you contact Garland, you connect with the designer, manufacturer, importer and distributor, which means we can custom design and manufacture any cable to meet your specific application requirements.

Garland Cables is owned and operated by Madison Group Enterprises and distributed by Madison Express.

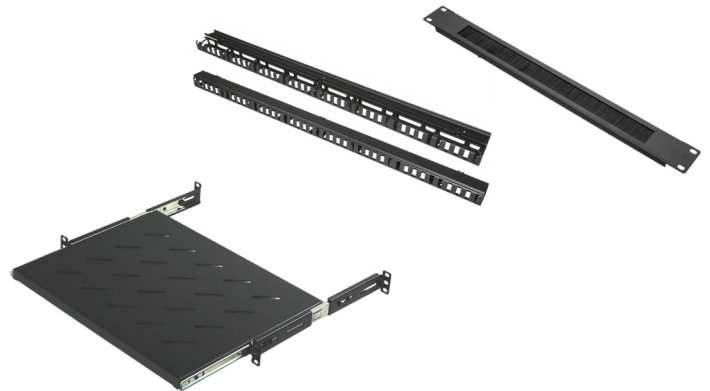
The team at Madison Express work closely with customers, get to know their projects and help find solutions to their connectivity challenges. The support of our customers and suppliers over the years, has allowed us to truly understand our partners' needs and provide professional and friendly service.



# Contents

|   |    |
|---|----|
| Your trusted expert in Data & Communications Solutions..... | 4  |
| Floor Standing Data Racks.....                              | 5  |
| Floor Standing Server Racks .....                           | 9  |
| Wall Cabinets & Racks.....                                  | 12 |
| Fan Units .....   | 13 |
| Blank Panels.....   | 13 |
| Brush Panels.....   | 13 |
| Cable Managers .....  | 14 |
| Baying Kits .....   | 15 |
| 19" Shelves.....  | 15 |
| Drawer .....  | 16 |
| Plinths.....  | 17 |

# Your trusted expert in Data & Communications Solutions



## Comprehensive Solutions.

The Garland range of racks and accessories have been designed to be flexible and easy to install. The racks come fully assembled and floor racks all have castors and leveling feet allowing easy positioning on-site. Racks come with four entry points on the roof and two on the base as well as removable and lockable side panels plus adjustable rails, making it simple to configure racks to suit your needs.

# Floor Standing Data Racks

The Garland range of floor racks come in two different door specs both available in multiple heights, widths and depths. A glass front /metal rear version, and a mesh front/split mesh rear version are available.

All floor racks come fully assembled and include leveling feet, heavy duty castors, shelves, ceiling mounted fan units with thermostat, a PDU and nuts/bolts/washers. All of the Garland floor racks come complete with reversible/lockable doors, removable and lockable side panels, top panel with ventilation holes and four cable entry points, bottom panel with two cable entry points, adjustable rails and have a 1000kg static load limit. A complete range of accessories is available for this these products.



glass door

mesh door

## 45U Glass Door, Floor Standing Racks

| Part Number                              | GDR45U600X600FGD | GDR45U600X800FGD | GDR45U600X1000FGD | GDR45U800X1000FGD |
|--|------------------|------------------|-------------------|-------------------|
| Package in cm<br>Length x Width x Height | 65 x 68 x 235    | 65 x 88 x 235    | 65 x 108 x 235    | 85 x 108 x 235    |
| Weight in kg                             | 118.0            | 138.0            | 153.0             | 185.0             |
| 2 Fan Tray with<br>Thermostat            | 1                |                  |                   |                   |
| 4 Fan Tray with<br>Thermostat            |                  | 1                | 1                 | 1                 |
| Fixed Shelves                            | 3                | 3                | 3                 | 3                 |
| 8 Way PDU                                | 1                | 1                | 1                 | 1                 |
| Nuts/Bolts/Washers                       | 40               | 40               | 40                | 40                |
| Lockable/reversible side<br>panels       | 2                | 2                | 2                 | 2                 |
| Lockable/reversible front<br>glass door  | 1                | 1                | 1                 | 1                 |
| Lockable/reversible rear<br>metal door   | 1                | 1                | 1                 | 1                 |
| Adjustable rails                         | ✓                | ✓                | ✓                 | ✓                 |
| Static load limit 1,000kg                | ✓                | ✓                | ✓                 | ✓                 |
| Vertical Cable<br>Management             |                  |                  |                   | 2                 |
| Baying Tabs                              | ✓                | ✓                | ✓                 | ✓                 |
| Fully assembled                          | ✓                | ✓                | ✓                 | ✓                 |
| Castors                                  | ✓                | ✓                | ✓                 | ✓                 |
| Levelling Feet                           | ✓                | ✓                | ✓                 | ✓                 |

# Floor Standing Data Racks

## 42U Glass Door, Floor Standing Racks

| Part Number                              | GDR42U<br>600X600FGD | GDR42U<br>600X800FGD | GDR42U<br>600X1000FGD | GDR42U<br>800X1000FGD |
|--|----------------------|----------------------|-----------------------|-----------------------|
| Package in cm<br>Length x Width x Height | 65 x 68 x 221.5      | 65 x 88 x 221.5      | 65 x 108 x 221.5      | 85 x 108 x 221.5      |
| Weight in kg                             | 113.0                | 131.0                | 147.0                 | 178.0                 |
| 2 Fan Tray with<br>Thermostat            | 1                    |                      |                       |                       |
| 4 Fan Tray with<br>Thermostat            |                      | 1                    | 1                     | 1                     |
| Fixed Shelves                            | 3                    | 3                    | 3                     | 3                     |
| 8 Way PDU                                | 1                    | 1                    | 1                     | 1                     |
| Nuts/Bolts/Washers                       | 40                   | 40                   | 40                    | 40                    |
| Lockable/reversible side<br>panels       | 2                    | 2                    | 2                     | 2                     |
| Lockable/reversible front<br>glass door  | 1                    | 1                    | 1                     | 1                     |
| Lockable/reversible rear<br>metal door   | 1                    | 1                    | 1                     | 1                     |
| Adjustable rails                         | ✓                    | ✓                    | ✓                     | ✓                     |
| Static load limit 1,000kg                | ✓                    | ✓                    | ✓                     | ✓                     |
| Vertical Cable<br>Management             |                      |                      |                       | 2                     |
| Baying Tabs                              | ✓                    | ✓                    | ✓                     | ✓                     |
| Fully assembled                          | ✓                    | ✓                    | ✓                     | ✓                     |
| Castors                                  | ✓                    | ✓                    | ✓                     | ✓                     |
| Levelling Feet                           | ✓                    | ✓                    | ✓                     | ✓                     |



# Floor Standing Data Racks

## 32U Glass Door, Floor Standing Racks

| Part Number                              | GDR32U<br>600X600FGD | GDR32U<br>600X800FGD | GDR32U<br>600X1000FGD |
|--|----------------------|----------------------|-----------------------|
| Package in cm<br>Length x Width x Height | 65 x 68 x 177        | 65 x 88 x 177        | 65 x 108 x 177        |
| Weight in kg                             | 93.0                 | 109.0                | 121.0                 |
| 2 Fan Tray with<br>Thermostat            | 1                    |                      |                       |
| 4 Fan Tray with<br>Thermostat            |                      | 1                    | 1                     |
| Fixed Shelves                            | 2                    | 2                    | 2                     |
| 8 Way PDU                                | 1                    | 1                    | 1                     |
| Nuts/Bolts/Washers                       | 40                   | 40                   | 40                    |
| Lockable/Reversible Side<br>Panels       | 2                    | 2                    | 2                     |
| Lockable/Reversible Front<br>Glass Door  | 1                    | 1                    | 1                     |
| Lockable/Reversible Rear<br>Metal Door   | 1                    | 1                    | 1                     |
| Adjustable Rails                         | ✓                    | ✓                    | ✓                     |
| Static Load Limit 1,000kg                | ✓                    | ✓                    | ✓                     |
| Baying Tabs                              | ✓                    | ✓                    | ✓                     |
| Fully Assembled                          | ✓                    | ✓                    | ✓                     |
| Castors                                  | ✓                    | ✓                    | ✓                     |
| Leveling Feet                            | ✓                    | ✓                    | ✓                     |



# Floor Standing Data Racks

## 22U Glass Door, Floor Standing Racks

| Part Number                              | GDR22U<br>600X600FGD | GDR22U<br>600X800FGD |
|--|----------------------|----------------------|
| Package in cm<br>Length x Width x Height | 65 x 68 x 132.5      | 65 x 88 x 132.5      |
| Weight in kg                             | 74.0                 | 85.0                 |
| 2 Fan Tray with<br>Thermostat            | 1                    |                      |
| 4 Fan Tray with<br>Thermostat            |                      | 1                    |
| Fixed Shelves                            | 1                    | 1                    |
| 8 Way PDU                                | 1                    | 1                    |
| Nuts/Bolts/Washers                       | 20                   | 20                   |
| Lockable/Reversible Side<br>Panels       | 2                    | 2                    |
| Lockable/Reversible Front<br>Glass Door  | 1                    | 1                    |
| Lockable/Reversible Rear<br>Metal Door   | 1                    | 1                    |
| Adjustable Rails                         | ✓                    | ✓                    |
| Static Load Limit 1,000kg                | ✓                    | ✓                    |
| Baying Tabs                              | ✓                    | ✓                    |
| Fully Assembled                          | ✓                    | ✓                    |
| Castors                                  | ✓                    | ✓                    |
| Leveling Feet                            | ✓                    | ✓                    |





# Floor Standing Server Racks

## 45U Mesh Door, Floor Standing Racks

| Part Number                              | GDR45U<br>600X600FMD | GDR45U<br>600X800FMD | GDR45U<br>600X1000FMD | GDR45U<br>800X800FMD | GDR45U<br>800X1000FMD |
|--|----------------------|----------------------|-----------------------|----------------------|-----------------------|
| Package in cm<br>Length x Width x Height | 65 x 68 x 235        | 65 x 88 x 235        | 65 x 108 x 235        | 85 x 88 x 235        | 85 x 108 x 235        |
| Weight in kg                             | 110.0                | 128.0                | 144.0                 | 154.0                | 171.0                 |
| 2 Fan Tray with<br>Thermostat            | 1                    |                      |                       |                      |                       |
| 4 Fan Tray with<br>Thermostat            |                      | 1                    | 1                     | 1                    | 1                     |
| Fixed Shelves                            | 3                    | 3                    | 3                     | 3                    | 3                     |
| 8 Way PDU                                | 1                    | 1                    | 1                     | 1                    | 1                     |
| Nuts/Bolts/Washers                       | 40                   | 40                   | 40                    | 40                   | 40                    |
| Lockable/Reversible Side<br>Panels       | 2                    | 2                    | 2                     | 2                    | 2                     |
| Lockable/Reversible Front<br>Mesh Door   | 1                    | 1                    | 1                     | 1                    | 1                     |
| Lockable Rear Mesh Split<br>Doors (set)  | 1                    | 1                    | 1                     | 1                    | 1                     |
| Adjustable Rails                         | ✓                    | ✓                    | ✓                     | ✓                    | ✓                     |
| Static Load Limit 1,000kg                | ✓                    | ✓                    | ✓                     | ✓                    | ✓                     |
| Vertical Cable<br>Management             |                      |                      |                       | 2                    | 2                     |
| Baying Tabs                              | ✓                    | ✓                    | ✓                     | ✓                    | ✓                     |
| Fully Assembled                          | ✓                    | ✓                    | ✓                     | ✓                    | ✓                     |
| Castors                                  | ✓                    | ✓                    | ✓                     | ✓                    | ✓                     |
| Leveling Feet                            | ✓                    | ✓                    | ✓                     | ✓                    | ✓                     |



# Floor Standing Server Racks

## 45U Mesh Door, Floor Standing Racks

| Part Number                              | GDR45U<br>600X600FMD | GDR45U<br>600X800FMD | GDR45U<br>600X1000FMD | GDR45U<br>800X800FMD | GDR45U<br>800X1000FMD |
|--|----------------------|----------------------|-----------------------|----------------------|-----------------------|
| Package in cm<br>Length x Width x Height | 65 x 68 x 235        | 65 x 88 x 235        | 65 x 108 x 235        | 85 x 88 x 235        | 85 x 108 x 235        |
| Weight in kg                             | 110.0                | 128.0                | 144.0                 | 154.0                | 171.0                 |
| 2 Fan Tray with<br>Thermostat            | 1                    |                      |                       |                      |                       |
| 4 Fan Tray with<br>Thermostat            |                      | 1                    | 1                     | 1                    | 1                     |
| Fixed Shelves                            | 3                    | 3                    | 3                     | 3                    | 3                     |
| 8 Way PDU                                | 1                    | 1                    | 1                     | 1                    | 1                     |
| Nuts/Bolts/Washers                       | 40                   | 40                   | 40                    | 40                   | 40                    |
| Lockable/Reversible Side<br>Panels       | 2                    | 2                    | 2                     | 2                    | 2                     |
| Lockable/Reversible Front<br>Mesh Door   | 1                    | 1                    | 1                     | 1                    | 1                     |
| Lockable Rear Mesh Split<br>Doors (set)  | 1                    | 1                    | 1                     | 1                    | 1                     |
| Adjustable Rails                         | ✓                    | ✓                    | ✓                     | ✓                    | ✓                     |
| Static Load Limit 1,000kg                | ✓                    | ✓                    | ✓                     | ✓                    | ✓                     |
| Vertical Cable<br>Management             |                      |                      |                       | 2                    | 2                     |
| Baying Tabs                              | ✓                    | ✓                    | ✓                     | ✓                    | ✓                     |
| Fully Assembled                          | ✓                    | ✓                    | ✓                     | ✓                    | ✓                     |
| Castors                                  | ✓                    | ✓                    | ✓                     | ✓                    | ✓                     |
| Leveling Feet                            | ✓                    | ✓                    | ✓                     | ✓                    | ✓                     |



# Floor Standing Server Racks

## 42U Mesh Door, Floor Standing Racks

| Part Number                              | GDR42U<br>600X600FMD | GDR42U<br>600X800FMD | GDR42U<br>600X1000FMD | GDR42U<br>800X800FMD | GDR42U<br>800X1000FMD |
|--|----------------------|----------------------|-----------------------|----------------------|-----------------------|
| Package in cm<br>Length x Width x Height | 65 x 68 x 221.5      | 65 x 88 x 221.5      | 65 x 108 x 221.5      | 85 x 88 x 221.5      | 85 x 108 x 221.5      |
| Weight in kg                             | 105.0                | 124.0                | 140.0                 | 148.0                | 165.0                 |
| 2 Fan Tray with<br>Thermostat            | 1                    |                      |                       |                      |                       |
| 4 Fan Tray with<br>Thermostat            |                      | 1                    | 1                     | 1                    | 1                     |
| Fixed Shelves                            | 3                    | 3                    | 3                     | 3                    | 3                     |
| 8 Way PDU                                | 1                    | 1                    | 1                     | 1                    | 1                     |
| Nuts/Bolts/Washers                       | 40                   | 40                   | 40                    | 40                   | 40                    |
| Lockable/Reversible Side<br>Panels       | 2                    | 2                    | 2                     | 2                    | 2                     |
| Lockable/Reversible Front<br>Mesh Door   | 1                    | 1                    | 1                     | 1                    | 1                     |
| Lockable Rear Mesh Split<br>Doors (set)  | 1                    | 1                    | 1                     | 1                    | 1                     |
| Adjustable Rails                         | ✓                    | ✓                    | ✓                     | ✓                    | ✓                     |
| Static Load Limit 1,000kg                | ✓                    | ✓                    | ✓                     | ✓                    | ✓                     |
| Vertical Cable<br>Management             |                      |                      |                       | 2                    | 2                     |
| Baying Tabs                              | ✓                    | ✓                    | ✓                     | ✓                    | ✓                     |
| Fully Assembled                          | ✓                    | ✓                    | ✓                     | ✓                    | ✓                     |
| Castors                                  | ✓                    | ✓                    | ✓                     | ✓                    | ✓                     |
| Leveling Feet                            | ✓                    | ✓                    | ✓                     | ✓                    | ✓                     |



# Wall Cabinets & Racks

## Patch Panel Wall Cabinets

Patch Panel wall cabinets available in 3 sizes. These cabinets include 19" mounting rails and include a lockable glass door. A great solution where patch panels need to be mounted in an area with limited space.

| Part Number                              | GDR2U<br>540X360W  | GDR4U<br>540X360W | GDR6U<br>540X360W  |
|--|--------------------|-------------------|--------------------|
| Package in cm<br>Length x Width x Height | 56.5 x 38.5 x 13.5 | 56.5 x 38.5 x 23  | 56.5 x 38.5 x 31.5 |
| Weight in kg                             | 7.4                | 9.0               | 11.5               |
| Size                                     | 2U                 | 4U                | 6U                 |
| Lockable Door                            | ✓                  | ✓                 | ✓                  |



## Garland Wall Racks

The Garland wall racks come in a range of sizes and depths, some versions include a reversible swing frame. All come with a fixed shelf, nuts/bolts/washers, a lockable door and lockable/removable side panels for easy access. The racks come equipped with castor mounting plates (castors optional extra) and roof vents to suit the optional fan.

### 18U & 12U Glass Door Wall Cabinets

| Part Number                              | GDR18U<br>600X450WGD | GDR18U<br>600X550WGDS | GDR12U<br>600X450WGD | GDR12U<br>600X550WGDS |
|--|----------------------|-----------------------|----------------------|-----------------------|
| Package in cm<br>Length x Width x Height | 62.5 x 49 x 40       | 64.5 x 59.5 x 56      | 62.5 x 49 x 93       | 64.5 x 59.5 x 43      |
| Weight in kg                             | 19.0                 | 27.0                  | 29.6                 | 23.0                  |
| Swing Frame - Reversible                 |                      | ✓                     |                      | ✓                     |
| Fixed Shelf                              | 2                    | 2                     | 1                    | 1                     |
| Nuts/Bolts/Washers                       | 24                   | 24                    | 12                   | 12                    |
| Lockable Door                            | ✓                    | ✓                     | ✓                    | ✓                     |
| Lockable Removable Side Panels           | 2                    | 2                     | 2                    | 2                     |
| Castor Mounting Plates                   | ✓                    | ✓                     | ✓                    | ✓                     |
| Roof Vents                               | ✓                    | ✓                     | ✓                    | ✓                     |

### 9U & 6U Glass Door Wall Cabinets

| Part Number                              | GDR9U<br>600X550WGDS | GDR6U<br>600X450WGD | GDR6U<br>600X550WGDS |
|--|----------------------|---------------------|----------------------|
| Package in cm<br>Length x Width x Height | 64.5 x 59.5 x 96     | 62.5 x 49 x 66.5    | 64.5 x 59.5 x 69.5   |
| Weight in kg                             | 42.8                 | 25.0                | 31.3                 |
| Swing Frame - Reversible                 | ✓                    |                     | ✓                    |
| Fixed Shelf                              | 1                    | 1                   | 1                    |
| Nuts/Bolts/Washers                       | 12                   | 12                  | 12                   |
| Lockable Door                            | ✓                    | ✓                   | ✓                    |
| Lockable Removable Side Panels           | 2                    | 2                   | 2                    |
| Castor Mounting Plates                   | ✓                    | ✓                   | ✓                    |
| Roof Vents                               | ✓                    | ✓                   | ✓                    |



# Fan Units

Two fan tray units suitable for Garland wall and floor racks. Complete with Thermostat and 1.8mtr cord.

| Part Number                              | GDRFAN2T<br>483X140 | GDRFAN2         |
|--|---------------------|-----------------|
| Package in cm<br>Length x Width x Height | 48.3 x 17 x 4.4     | 35 x 13.5 x 4.2 |
| Weight in kg                             | 3.4                 | 10.5            |
| Wall Rack Fan                            |                     | ✓               |
| Floor Rack Fan                           | ✓                   |                 |
| 2 Fan Tray                               | ✓                   | ✓               |
| Thermostat                               | ✓                   | ✓               |



# Blank Panels



19" blanking panels available in a range of sizes and mounting styles.

| Part Number                              | GDRBLANK<br>1UTLP   | GDRBLANK<br>1UBK    | GDRBLANK<br>2UBK    | GDRBLANK<br>3UBK     | GDRBLANK<br>4UBK     | GDRBLANK<br>1UTL    | GDRBLANK<br>2UTL    |
|--|---------------------|---------------------|---------------------|----------------------|----------------------|---------------------|---------------------|
| Package in cm<br>Length x Width x Height | 48.3 x 2.8<br>x 4.4 | 48.3 x 1.0<br>x 4.4 | 48.3 x 1.0<br>x 8.8 | 48.3 x 1.0<br>x 13.3 | 48.3 x 1.0<br>x 17.7 | 48.3 x 1.0<br>x 4.4 | 48.3 x 1.0<br>x 8.8 |
| Weight in kg                             | 0.1                 | 0.3                 | 0.5                 | 0.7                  | 0.8                  | 0.3                 | 11.5                |
| Size                                     | 1U                  | 1U                  | 2U                  | 3U                   | 4U                   | 1U                  | 2U                  |
| Tool-less Mounting                       |                     |                     |                     |                      |                      | ✓                   | ✓                   |
| Metal                                    |                     | ✓                   | ✓                   | ✓                    | ✓                    | ✓                   | ✓                   |
| Plastic                                  | ✓                   |                     |                     |                      |                      |                     |                     |

# Brush Panels

19" brush panel available as standard bolt mount, or tool-less.

| Part Number                              | GDRBRUSHIU       | GDRBRUSHIUTL     |
|--|------------------|------------------|
| Package in cm<br>Length x Width x Height | 48.3 x 1.1 x 4.4 | 48.3 x 1.1 x 4.4 |
| Weight in kg                             | 0.3              | 0.3              |
| Size                                     | 1U               | 1U               |
| Tool-less Mounting                       |                  | ✓                |



# Cable Managers



## Horizontal management

19" Horizontal cable management, available in various styles and sizes.

| Part Number                           | GDR MANAGER 1UHD  | GDR MANAGER 2UHD  | GDR MANAGER 1U   | GDR MANAGER 2U   | GDR MANAGER 1U DUCT | GDR MANAGER 2U DUCT |
|---------------------------------------|-------------------|-------------------|------------------|------------------|---------------------|---------------------|
| Package in cm Length x Width x Height | 48.3 x 11.3 x 4.4 | 48.3 x 11.3 x 8.8 | 48.3 x 8.0 x 4.4 | 48.3 x 8.0 x 8.8 | 48.3 x 7.0 x 4.4    | 48.3 x 7.0 x 8.8    |
| Weight in kg                          | 0.88              | 1.4               | 0.4              | 0.7              | 0.7                 | 1.1                 |
| Size                                  | 1U                | 2U                | 1U               | 2U               | 1U                  | 2U                  |
| High Density                          | ✓                 | ✓                 |                  |                  |                     |                     |
| Five Ring                             |                   |                   | ✓                | ✓                |                     |                     |
| Duct Style                            |                   |                   |                  |                  | ✓                   | ✓                   |

## Vertical Management

Vertical cable manager suitable for 800w Garland racks.



| Part Number                           | GDRVCM1U 860X70  | GDRVCM2U 860X70  | GDRVCM1U 860X95  | GDRVCM2U 860X95  |
|---------------------------------------|------------------|------------------|------------------|------------------|
| Package in cm Length x Width x Height | 4.8 x 8.8 x 86.4 | 9.2 x 8.8 x 86.4 | 4.9 x 6.3 x 86.4 | 8.8 x 6.3 x 86.4 |
| Weight in kg                          | 1.77             | 3.26             | 2.05             | 3.66             |
| Size                                  | 1U               | 2U               | 1U               | 2U               |
| Cable Rings                           | ✓                | ✓                |                  |                  |
| Cable Duct                            |                  |                  | ✓                | ✓                |
| Qty                                   | 2pc              | 2pc              | 2pc              | 2pc              |

## Vertical Management for Garland Floor Racks

Vertical cable managers to suit Garlands range of 800W racks. Available in sizes to suit 18U, 27U, 42U and 45U.

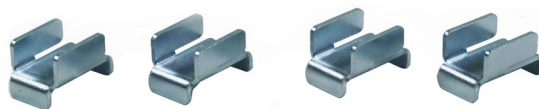


| Part Number                           | GDR18UVCM        | GDR27UVCM         | GDR42UVCM         | GDR45UVCM         |
|---------------------------------------|------------------|-------------------|-------------------|-------------------|
| Package in cm Length x Width x Height | 9.4 x 6.9 x 80.2 | 9.4 x 6.9 x 120.2 | 9.4 x 6.9 x 186.9 | 9.4 x 6.9 x 200.2 |
| Weight in kg                          | 3.9              | 5.4               | 8.2               | 0                 |
| Size                                  | 18U              | 27U               | 42U               | 45U               |
| Qty                                   | 2pc              | 2pc               | 2pc               | 2pc               |
| Hinged Cover                          | ✓                | ✓                 | ✓                 | ✓                 |

# Baying Kits

Garland floor racks are supplied with baying tabs.  
4 pieces per set.

|  |                  |
|--|------------------|
| Part Number                              | GDRBAYKIT4       |
| Package in cm<br>Length x Width x Height | 10.0 x 5.0 x 2.0 |
| Weight in kg                             | 0.1              |



# 19" Shelves

19" mounted shelves in various configurations, from cantilever, to fixed, and sliding. A range of the fixed and sliding shelves are also adjustable.



## Cantilever

| Part Number                              | GDRSHELF1U<br>CANT300 | GDRSHELF1U<br>CANT350 | GDRSHELF2U<br>CANT300 | GDRSHELF2U<br>CANT350 |
|--|-----------------------|-----------------------|-----------------------|-----------------------|
| Package in cm<br>Length x Width x Height | 48.3 x 30 x 4.4       | 48.3 x 35 x 4.4       | 48.3 x 30 x 8.8       | 48.3 x 35 x 8.8       |
| Weight in kg                             | 1.9                   | 2.1                   | 2                     | 2.5                   |
| Size                                     | 1U                    | 1U                    | 2U                    | 2U                    |

## Fixed

| Part Number                              | GDRSHELF<br>FIXED350 | GDRSHELF<br>FIXED550 | GDRSHELF<br>FIXED650 | GDRSHELF<br>FIXED710 | GDRSHELF<br>FIXED750 |
|--|----------------------|----------------------|----------------------|----------------------|----------------------|
| Package in cm<br>Length x Width x Height | 47 x 35 x 4.8        | 47 x 55 x 4.8        | 47.0 x 65 x 4.8      | 47 x 71 x 4.8        | 47 x 75 x 4.8        |
| Weight in kg                             | 2.4                  | 3.4                  | 4                    | 4.2                  | 4.8                  |
| Size                                     | 1U                   | 1U                   | 1U                   | 1U                   | 1U                   |

## Sliding

| Part Number                              | GDRSHELF<br>SLIDING35 | GDRSHELF<br>SLIDING55 | GDRSHELF<br>SLIDING65 | GDRSHELF<br>SLIDING71 | GDRSHELF<br>SLIDING75 |
|--|-----------------------|-----------------------|-----------------------|-----------------------|-----------------------|
| Package in cm<br>Length x Width x Height | 47 x 35 x 5.6         | 47 x 55 x 5.6         | 47.0 x 65 x 5.6       | 47 x 71 x 5.6         | 47 x 75 x 5.6         |
| Weight in kg                             | 3.2                   | 4.4                   | 4.7                   | 4.84                  | 5                     |
| Size                                     | 1U                    | 1U                    | 1U                    | 1U                    | 1U                    |

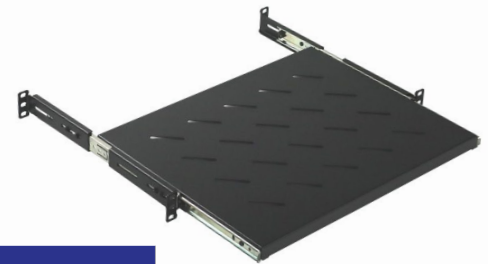


# 19" Shelves



## Adjustable - Fixed

| Part Number                              | GDRSHELF<br>ADJ35X60 | GDRSHELF<br>ADJ55X80 | GDRSHELF<br>ADJ65X100 | GDRSHELF<br>ADJ75X120 |
|--|----------------------|----------------------|-----------------------|-----------------------|
| Package in cm<br>Length x Width x Height | 48.8 x 35 x 4.4      | 48.8 x 55 x 4.4      | 48.8 x 65 x 4.4       | 48.8 x 75 x 4.4       |
| Weight in kg                             | 3.1                  | 4.7                  | 5.1                   | 5.6                   |
| Size                                     | 1U                   | 1U                   | 1U                    | 1U                    |
| Adjustment Details in cm                 | 35-41                | 55-73                | 65-83                 | 75-93                 |



## Adjustable - Sliding

| Part Number                              | GDRSHELF<br>AD35X60S | GDRSHELF<br>AD55X80S | GDRSHELF<br>AD65X100S | GDRSHELF<br>AD75X120S |
|--|----------------------|----------------------|-----------------------|-----------------------|
| Package in cm<br>Length x Width x Height | 48.8 x 35 x 4.4      | 48.8 x 55 x 4.4      | 48.8 x 65 x 4.4       | 48.8 x 75 x 4.4       |
| Weight in kg                             | 3.0                  | 4.1                  | 4.8                   | 5.1                   |
| Size                                     | 1U                   | 1U                   | 1U                    | 1U                    |
| Adjustment Details in cm                 | 35-56                | 55-88                | 65-97                 | 75-107                |

# Drawer

## 2U Drawer

| Part Number          | GDRDRAWER2U350LK |
|----------------------|------------------|
| Package Length in cm | 48.3             |
| Package Width in cm  | 35               |
| Package Height in cm | 8.8              |
| Weight in kg         | 7.2              |





# Plinths

Garland floor plinths are manufactured to suit the floor rack range. Available in multiple configurations.

| Part Number                              | GDRPLNTH<br>60X100X10 | GDRPLNTH<br>60X60X10 | GDRPLNTH<br>60X80X10 | GDRPLNTH<br>80X100X10 | GDRPLNTH<br>80X80X10 |
|--|-----------------------|----------------------|----------------------|-----------------------|----------------------|
| Package in cm<br>Length x Width x Height | 60 x 100 x 10         | 60 x 60 x 10         | 60 x 80 x 10         | 80 x 100 x 10         | 80 x 80 x 10         |
| Weight in kg                             | 11.7                  | 9.2                  | 10.5                 | 14.5                  | 13.2                 |



## Build your Green Star PVC Credits with Garland Pro Series Cables

pro series

Industrial / Power / Data / Security / Fibre



Garland Pro Series copper cables, the first communications and data cable accredited by the Vinyl Council of Australia.

- LAN & Data
- Security & Fire Control
- Coaxial
- Telephone
- Instrumentation & Control
- Audio Visual



garland

Sales Enquiries 1800 66 99 99

[www.garlandcables.com.au](http://www.garlandcables.com.au)