

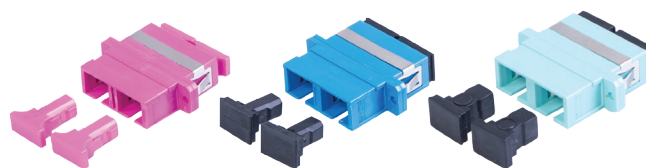


garland

GTA series through adapters

For optical fibre applications

- Designed for patching through bulkheads and FOBOT faceplates
- High precision ceramic ferrules
- Thermally stable plastic body
- Supplied in bags of 12
- Clip or screw mount for SC and LC variants



Garland GTA series through adapters (also called through connectors), are designed to complement Garland's MT30903, MT30904 and MT30905 FOBOT's. Using quality materials and high precision ceramic ferrules, these through adapters will give excellent alignment and service life.

Each through adapter is fitted with dust covers and packed in its own heat sealed bag to keep it in clean and pristine condition.

Multimode through adapters are compatible with OM1 through to OM4 fibres. Where practicable, the through adapters are colour coded to allow easy identification of the fibre application.

Available for a number of common fibre optic connectors including LC duplex (SC footprint), SC duplex and ST simplex.

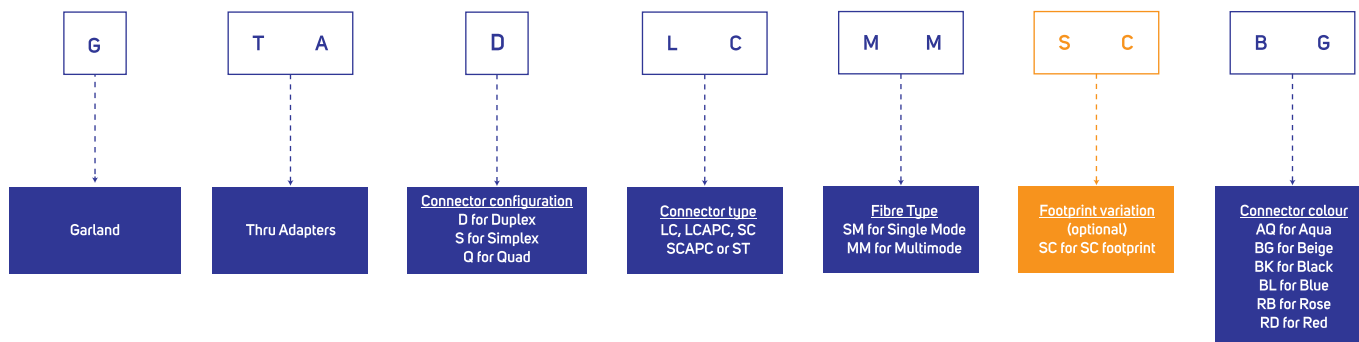
Specifications

Insertion Loss	< 0.2dB
Temp Range	-40C to +85C
Durability (500 mating cycles)	0.2dB increase

Use with

Part Number	Description
MT30903	24 port 1RU sliding tray FOBOT, Black
MT30904	24 port 1RU fixed tray FOBOT, Black
MT30905	48 port, 2RU sliding tray FOBOT, Black
GPC Series	Patch Cords
GPT Series	Pigtails

Ordering Information



With Garland, you are always well connected.

Sales Enquiries **1800 66 99 99**
www.garlandcables.com.au

made by



madison