



**Express**  
**madison**  
Commercial . Industrial . Wholesale

# Copper Networking Products.

Short Form Catalogue

develop / distribute / support

## Who we are.

Madison Express specialises in the distribution of quality cable, connectivity and a range of Madison Group products primarily to the electrical wholesale market.

Alongside our own Garland brand, we represent a range of leading cabling and connectivity product lines including LEONI, R&M and 3M. We provide expert advice and care across all our products and can assist with all aspects of pre and post-sales support.

Our experience supporting viable connectivity solutions across key market sectors is underpinned by over 30 years of insights and customer understanding.



## People.

Our team is dedicated to finding the best possible solution for every project.

The team at Madison Express is committed to connecting everyone through our reliable cable and associated products. We work closely with customers, get to know their projects and help find solutions to their connectivity challenges. The support of our customers and suppliers over the years, has allowed us to truly understand our partners' needs and provide professional and friendly service.

# Distribution.

Connecting you to world-leading brands.

We efficiently connect customers with leading, state of the art solutions. We have large warehouses, logistics and sales teams in Australia, offering responsive service and fast access to products. Our lower MoQs provide added flexibility and reduced costs.



# Contents.

## GARLAND

Category 6A.....	5
Category 6.....	7
Category 5E.....	10
Accessories.....	13
Terminating Options For Garland	
Jacks.....	14
Media Converters.....	15
Work Series range of cables.....	15
Green Star Program.....	16
20 Year Structured Cabling Warranty..	17

## R&M

Category Copper Cables.....	18
Mounting Systems.....	18
Copper Termination	
Modules, Tools & Plugs.....	19
Copper Patch Panels.....	20
Copper Accessories.....	21
Patch Cords.....	22
Copper Security System.....	23
Connect with us.....	24

# Contact Us.

View more of our extensive range:  
[www.madisonexpress.com.au](http://www.madisonexpress.com.au)

# Your trusted expert in Cabling & Connectivity.



## Comprehensive Solutions.

Madison Express is your leading partner for comprehensive cabling solutions. We are uniquely positioned to offer a range of data and communications solutions from a diverse portfolio of trusted brands.



# Category 6A.



## Network Cables (Solid Conductor)

Part Number	Description	Screened	Indoor	Outdoor	Underground	Fire Rated <sup>1,2</sup>	Length
UTPL6AHFBK500A	4 Pr Cat6A UTP LSZH Black	No	☉				500m
UTPL6AHFxx305A*	4 Pr Cat6A UTP LSZH (see Coding Sheet for colours)	No	☉				305m
FTPL6AHFxx305*	4 Pr Cat 6A F/UTP LSZH (see Coding Sheet for colours)	Yes (F/UTP)	☉				305m
FTPL6AHFBL500	4 Pr Cat 6A F/UTP LSZH Blue	Yes (F/UTP)	☉				500m
FTPL6AHFGY500	4 Pr Cat 6A F/UTP LSZH Grey	Yes (F/UTP)	☉				500m
FTPL6AJFBK500	4 Pr Cat6A F/UTP Jelly Filled PE Black	Yes (F/UTP)		☉	☉		305m
SFTPL6AFIRERD100	4 Pr Cat6A S/FTP LSZH Fire Rated Red	Yes (S/FTP)	☉			☉	100m
SFTPL6AFIRERD305	4 Pr Cat6A S/FTP LSZH Fire Rated Red	Yes (S/FTP)	☉			☉	305m

\*xx denotes various colour options - see Coding Sheet Table for colours available.

### Colour Coding Sheet

colour	xx	colour	xx	colour	xx
Black	BK	Grey	GY	Violet	VT
Blue	BL	Orange	OG	White	WH
Brown	BN	Pink	PK	Yellow	YE
Green	GN	Red	RD		



## Connectivity Hardware

Part Number	Description	Pack Contents			
		Outlets/Jacks	Bezels <sup>#</sup>	Patch Panel	Cable Manager
MT6A4501C	RJ45 Cat6A screened outlet keystone TS series	12	12		
MT6A4501KC-BKWH	RJ45 Cat6A UTP outlet keystone TS series	12	12		
MT6AL4524M	Cat6A screened patch panel + angled Cat6A outlets + Cable Manager	24		1 (unloaded)	1
MTE4524M	24 port unloaded patch panel + Cable Manager			1 (unloaded)	1

## Tools

Part Number	Description	Pack Contents
MT6ATS-TOOL	Tool for TS series Keystone Jacks	1 tool + 1 spare cutter blade

<sup>1</sup>Fire rated to IEC 60331-23:1999 for 180 min @ 750°C.

<sup>2</sup>Circuit integrity for 180 min @ 830°C with continuous transmission performance.

\*Bezels allow Keystone jacks to be fitted to Clipsal 2000 series faceplates.

# Category 6A.



## Patch Leads

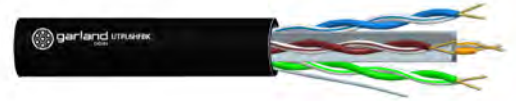
Cat6A S/FTP Patch Cord, Bare Copper, 26 AWG, 4PR Stranded, 50 Um Gold plated plugs, LSZH outer jacket, Cat6A Screened Plug, Component Compliant.

Part Number	Description	Screened	Length	Colour
MT6AL45450.25xx*-B	4Pr Cat6A patch lead	Yes	0.25m	Black, Blue, Grey, Violet, White, Yellow
MT6AL45450.5xx*-B	4Pr Cat6A patch lead	Yes	0.5m	
MT6AL45451.0xx*-B	4Pr Cat6A patch lead	Yes	1.0 m	
MT6AL45452.0xx*-B	4Pr Cat6A patch lead	Yes	2.0 m	
MT6AL45453.0xx*-B	4Pr Cat6A patch lead	Yes	3.0 m	
MT6AL45455.0xx*-B	4Pr Cat6A patch lead	Yes	5.0 m	
MT6AL454510.0xx*-B	4Pr Cat6A patch lead	Yes	10.0 m	
MT6AL454515.0xx*-B	4Pr Cat6A patch lead	Yes	15.0 m	
MT6AL454520.0xx*-B	4Pr Cat6A patch lead	Yes	20.0 m	

\*xx denotes various colour options - see Coding Sheet Table for colour abbreviations..

Colour Coding Sheet	
colour	xx
Black	BK
Blue	BE
Grey	GY
Violet	VT
White	WH
Yellow	YE

# Category 6.



## Network Cables (Solid Conductor)

Part Number	Description	Length	Screened	Indoor	Outdoor	Underground	Armoured
UTPL6BL305RBBW	4Pr Cat6 UTP PVC Blue	305m	No	⊙			
UTPL6HFBE305RBA	4Pr Cat6 UTP LSZH Blue	305m	No	⊙			
UTPL6HFBK305RBA	4Pr Cat6 UTP LSZH Black	305m	No	⊙			
UTPL6HFGN305RBA	4Pr Cat6 UTP LSZH Green	305m	No	⊙			
UTPL6HFGY305RBA	4Pr Cat6 UTP LSZH Grey	305m	No	⊙			
UTPL6HFOE305RBA	4Pr Cat6 UTP LSZH Orange	305m	No	⊙			
UTPL6HFPK305RBA	4Pr Cat6 UTP LSZH Pink	305m	No	⊙			
UTPL6HFRD305RBA	4Pr Cat6 UTP LSZH Red	305m	No	⊙			
UTPL6HFVT305RBA	4Pr Cat6 UTP LSZH Violet	305m	No	⊙			
UTPL6HFVH305RBA	4Pr Cat6 UTP LSZH White	305m	No	⊙			
UTPL6HFWH305RBA	4Pr Cat6 UTP LSZH Yellow	305m	No	⊙			
FTPL6PP305	4Pr Cat6 F/UTP PE jacket Black	305m	Yes (F/UTP)		⊙		
UTPL6PP500	4Pr Cat6 UTP PE jacket Black	500m	No		⊙		
UTPL6JFBK305	4Pr Cat6 Jelly Filled PE Black	305m	No		⊙	⊙	
UTPL6JFNYSAC305	4Pr Cat6 Jelly Filled Sac Sheath	305m	No		⊙	⊙	
UTPL6JFSWANYA500	4Pr Cat6 Jelly Filled SWA/PE/NY	500m	No		⊙	⊙	⊙

## Network Cables (Stranded Conductor)

Part Number	Description	Length	Screened	Indoor
UTPL6MTPBK305W	Cat6 Patch Cable UTP PVC Black	305m	No	⊙
UTPL6MTPBL305W	Cat6 Patch Cable UTP PVC Blue	305m	No	⊙
UTPL6MTPGN305W	Cat6 Patch Cable UTP PVC Green	305m	No	⊙
UTPL6MTPGY305W	Cat6 Patch Cable UTP PVC Grey	305m	No	⊙
UTPL6MTPOG305W	Cat6 Patch Cable UTP PVC Orange	305m	No	⊙
UTPL6MTPPU305W	Cat6 Patch Cable UTP PVC Purple	305m	No	⊙
UTPL6MTPRD305W	Cat6 Patch Cable UTP PVC Red	305m	No	⊙
UTPL6MTPWH305W	Cat6 Patch Cable UTP PVC White	305m	No	⊙
UTPL6MTPYE305W	Cat6 Patch Cable UTP PVC Yellow	305m	No	⊙

# Category 6.



## Connectivity Hardware



Part Number	Description	Pack Contents			
		Outlets/Jacks	Bezels*	Patch Panel	Cable Manager
MT64501C	RJ45 Cat6 UTP outlet Mech 30 style	12			
MT64501C-TUB	RJ45 Cat6 UTP outlet Mech 30 style	50			
MT64501KC-BKWH	RJ45 Cat6 UTP outlet keystone TS series	12	12		
MT64524M	Cat6 UTP loaded patch panel + Cable Manager	24		1 (loaded)	1
MTE4524M	24 port unloaded keystone patch panel + Cable Manager			1 (unloaded)	1

## Tools

Part Number	Description	Pack Contents
MT6ATS-TOOL	Tool for TS series Keystone Jacks	1 tool + 1 spare cutter blade



\*Bezels allow Keystone jacks to be fitted to Clipsal 2000 series faceplates.



# Category 6.



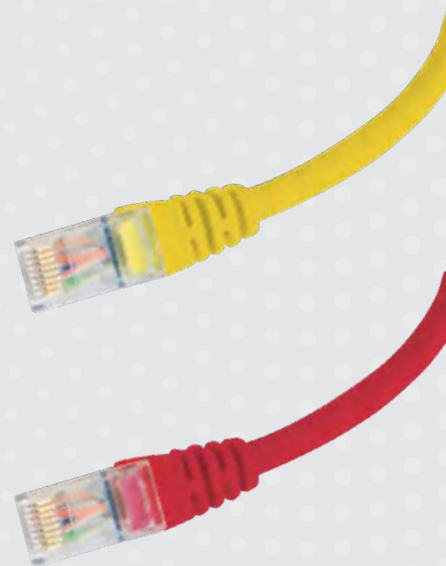
## Patch Leads

Cat6 UTP Patch Cord, Bare Copper, 24 AWG, 4PR Stranded, 50 Um Gold plated plugs, LSZH outer jacket, Component Compliant.

Part Number	Description	Screened	Length	Colour(s)
MT6L45450.25xx-B*	Cat6 patch lead	No	0.25m	Black, Blue, Green, Grey, Orange, Pink, Red, White, Yellow
MT6L45450.5xx-B*	Cat6 patch lead	No	0.5m	
MT6L45451.0xx-B*	Cat6 patch lead	No	1.0 m	
MT6L45452.0xx-B*	Cat6 patch lead	No	2.0 m	
MT6L45453.0xx-B*	Cat6 patch lead	No	3.0 m	
MT6L45455.0xx-B*	Cat6 patch lead	No	5.0 m	
MT6L454510.0xx-B*	Cat6 patch lead	No	10.0 m	
MT6L454515.0xx-B*	Cat6 patch lead	No	15.0 m	
MT6L454520.0xx-B*	Cat6 patch lead	No	20.0 m	

\*xx denotes various colour options - see Coding Sheet Table for colour abbreviations..

Colour Coding Sheet	
colour	xx
Black	BK
Blue	BE
Green	GN
Grey	GY
Pink	PK
Red	RD
White	WE
Yellow	YW
Orange	OE
Violet	VT



# Category 5E.



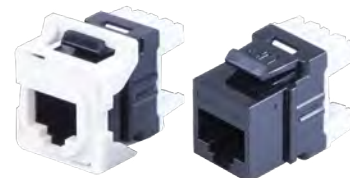
## Network Cables (Solid Conductor)

Part Number	Description	Length	Screened	Indoor	Outdoor	Underground
FTP5EBL305R	4Pr Cat5E F/UTP PVC Blue	305m	Yes (F/UTP)	⊙		
UTPL5EBL305BW	4Pr Cat5E UTP PVC Blue	305m	No	⊙		
UTPL5EHFBE305B	4Pr Cat5E UTP LSZH Blue	305m	No	⊙		
UTPL5EHFBK305B	4Pr Cat5E UTP LSZH Black	305m	No	⊙		
UTPL5EHFGN305B	4Pr Cat5E UTP LSZH Green	305m	No	⊙		
UTPL5EHFGY305B	4Pr Cat5E UTP LSZH Grey	305m	No	⊙		
UTPL5EHFOE305B	4Pr Cat5E UTP LSZH Orange	305m	No	⊙		
UTPL5EHFPK305B	4Pr Cat5E UTP LSZH Pink	305m	No	⊙		
UTPL5EHFRD305B	4Pr Cat5E UTP LSZH Red	305m	No	⊙		
UTPL5EHFVT305B	4Pr Cat5E UTP LSZH Violet	305m	No	⊙		
UTPL5EHFWH305B	4Pr Cat5E UTP LSZH White	305m	No	⊙		
UTPL5EHFYW305B	4Pr Cat5E UTP LSZH Yellow	305m	No	⊙		
UTPL5EPP500	4Pr Cat5E UTP PE jacket Black	500m	No		⊙	
UTPL5EJF305R	4Pr Cat5E Jelly Filled PE Black	305m	No		⊙	⊙

## Network Cables (Stranded Conductor)

Part Number	Description	Length	Screened	Indoor
UTPL5EMTPBK305W	Cat5E Patch Cable UTP PVC Black	305m	No	⊙
UTPL5EMTPBL305W	Cat5E Patch Cable UTP PVC Blue	305m	No	⊙
UTPL5EMTPGN305W	Cat5E Patch Cable UTP PVC Green	305m	No	⊙
UTPL5EMTPGY305W	Cat5E Patch Cable UTP PVC Grey	305m	No	⊙
UTPL5EMTPPK305W	Cat5E Patch Cable UTP PVC Pink	305m	No	⊙
UTPL5EMTPRD305W	Cat5E Patch Cable UTP PVC Red	305m	No	⊙
UTPL5EMTPVT305W	Cat5E Patch Cable UTP PVC Violet	305m	No	⊙
UTPL5EMTPYE305W	Cat5E Patch Cable UTP PVC Yellow	305m	No	⊙

# Category 5E.



## Connectivity Hardware

Part Number	Description	Pack Contents			
		Outlets/Jacks	Bezels*	Patch Panel	Cable Manager
MT54501C	RJ45 Cat5E UTP outlet Mech 30 style	12			
MT54501C-TUB	RJ45 Cat5E UTP outlet Mech 30 style	50			
MT54501KC-BKWH	RJ45 Cat5E UTP outlet keystone TS series	12	12		
MT54524EM	Cat5E UTP loaded patch panel + Cable Manager	24		1 (loaded)	1
MTE4524M	24 port unloaded keystone patch panel + Cable Manager			1 (unloaded)	1

## Tools

Part Number	Description	Pack Contents
MT6ATS-TOOL	Tool for TS series Keystone Jacks	1 tool + 1 spare cutter blade



\*Bezels allow Keystone jacks to be fitted to Clipsal 2000 series faceplates.

# Category 5E.



## Patch Leads

Part Number	Description	Screened	Length	Colour(s)
MTEL45450.5xx*	Cat5E patch lead	No	0.5m	Black, Blue, Green, Grey, Orange, Pink, Red, Violet, White, Yellow
MTEL45451.0xx*	Cat5E patch lead	No	1.0 m	
MTEL45451.5xx*	Cat5E patch lead	No	1.5 m	
MTEL45452.0xx*	Cat5E patch lead	No	2.0 m	
MTEL45453.0xx*	Cat5E patch lead	No	3.0 m	
MTEL45455.0xx*	Cat5E patch lead	No	5.0 m	
MTEL454510.0xx*	Cat5E patch lead	No	10.0 m	
MTEL454515.0xx*	Cat5E patch lead	No	15.0 m	

\*xx denotes various colour options - see Coding Sheet Table for colour abbreviations..

Colour Coding Sheet	
colour	xx
Black	BK
Blue	BL
Green	GN
Grey	GY
Orange	OR
Pink	PK
Red	RD
Violet	VI
White	WH
Yellow	YL



# Accessories.



## GARLAND TS Series

TS series outlets and accessories allow for a faster installation. The single action to punch down and trim all 8 conductors reduces installation time, efficiency and increases reliability. The TS series includes outlets for Cat5E, Cat6 and Cat6A as well as a tool to facilitate the termination. TS series outlets can also be installed with 110 and single punchdown/cut tools, allowing you to install with your standard tools<sup>3</sup>.



The TS series of jacks has a standard Keystone face and can be used with all standard keystone faceplates, patch panels and bezels. The jacks are either black (UTP) or metallic (screened) and are supplied with 1 white bezel to facilitate use in traditional Clipsal 2000 series faceplates. Additional shuttered and coloured bezels are available and sold separately.



Additional products in the lineup are empty keystone patch panels and DIN mounts allowing you to install the TS series of jacks in standard 19' rack or DIN rail installations. Suitable for both screened and unshielded outlets.

Part Number	Description	Comments				
		Outlet + Bezel	Coloured Bezel	Shuttered Bezel	Unloaded panel	DIN Rail Mount
MT6A4501KC	RJ45 Cat6A Screened outlet keystone TS series	⊙				
MT6A4501KC-BKWH	RJ45 Cat6A UTP outlet keystone TS series	⊙				
MT64501KC-BKWH	RJ45 Cat6 UTP outlet keystone TS series	⊙				
MT5E4501KC-BKWH	RJ45 Cat5E UTP outlet keystone TS series	⊙				
MT6ATS-TOOL	Tool for TS series Keystone outlets					
MTKB-BE	Coloured bezel for Keystone outlets - Blue		⊙			
MTKB-BK	Coloured bezel for Keystone outlets - Black		⊙			
MTKB-GN	Coloured bezel for Keystone outlets - Green		⊙			
MTKB-GY	Coloured bezel for Keystone outlets - Grey		⊙			
MTKB-OG	Coloured bezel for Keystone outlets - Orange		⊙			
MTKB-RD	Coloured bezel for Keystone outlets - Red		⊙			
MTKB-WH	Coloured bezel for Keystone outlets - White		⊙			
MTKB-YW	Coloured bezel for Keystone outlets - Yellow		⊙			
MTKSB-WH	Shuttered bezel for Keystone outlets - White			⊙		
MTE4524M	24 port unloaded patch panel for Keystone outlets + cable manager				⊙	
MTKDIN01-GY	DIN Rail mount for Keystone outlets					⊙

## Other Accessories

Part Number	Description
MCM112BK	Horizontal Cable Manager, 1RU, 12 fingers
MCM212BK	Horizontal Cable Manager, 2RU, 12 fingers



<sup>3</sup>Installation time when using standard type tools is typical of these types of tools and not as efficient as using Garland's TS series tool.

# Terminating Options For Garland Jacks.



## Standard Series

Depending on the type of jack purchased, several tool options are available for terminating the jack. Garlands standard range will accept a normal 110 or Krone™ compatible tool. Both these tools terminate 1 wire at a time with the added advantage that the Krone™ compatible tools include a scissor cutter in the tool head to cut off the excess wire. Some 110 tools also contain a fixed cutting blade that can achieve the same result. Standard jacks are designed to fit Clipsal 2000 compatible faceplates whilst the standard series patch panel comes preloaded with 24 jacks in groups of 6, 8 or 12.

## TS Series

For a faster and more reliable installation, Garland offers it's TS series of jacks. These jacks can be terminated with the conventional 110 and KRONE tools but can also be terminated with Garland's TS tool. The added benefits of a faster fit-off and improved reliability are definite advantages to the TS system whilst still providing the option of using standard 110 and Krone™ tools if the need arises. TS series jacks are of Keystone profile and come supplied with white bezels to allow them to be fitted to Clipsal 2000 series compatible faceplates. To help identify different services, coloured bezels may be purchased separately. The TS series also includes an empty Keystone patch panel that can be used for Cat5E, Cat6 and Ca6A in either screened or unscreened installations.



## Angling patch leads

For screened solutions, the 90° bend that the patch cord needs to traverse in the small space at the front of the patch panel can degrade or damage the lead and its connector. To alleviate this, most of Garland's competitors will offer an angled patch panel. Although this addresses the issue of minimum bending radius with the patch lead, it does pose other cooling and aesthetic issues. As an alternative to this approach, Garland offers its angled solution based on a flat patch panel with offset connectors. Angled at 45° and facing either left or right, this approach addresses the bending radius concerns of screened patch leads whilst retaining a unified look and minimizing the impact on air circulation that can occur with an angled panel. In addition, the jacks utilize a toolless termination process eliminating the need for a specialized terminating tool.



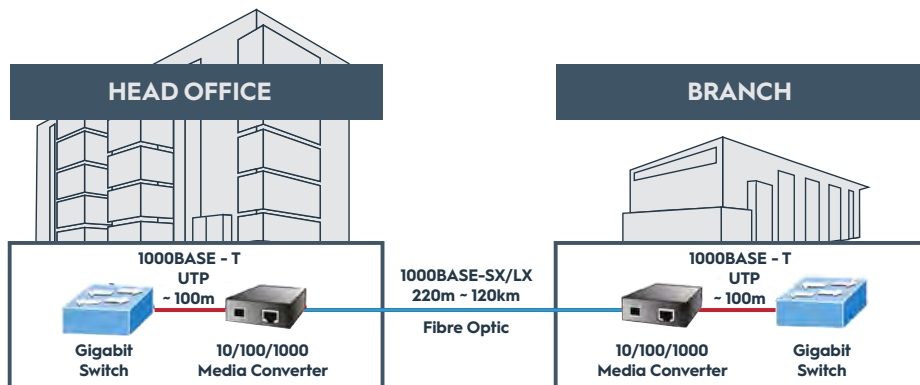
# Media Converters.



Structured cabling is specified to transmission distances up to 90 metres. Sometimes this distance may be increased slightly subject to the transmission standard being used<sup>4</sup>, however where a significant increase in distance is required, it is standard practice to incorporate an additional router or switch into the network design. Where the number of points that exceed the 90 metre length is small (1 or 2 points), an alternative might be to consider the use of a Media converter.

Media converters change the transmission medium from copper to fibre and back to copper again, allowing for longer transmission distances (up to 20km using single mode fibre<sup>5</sup>) to be achieved. Garland media converters are “plug-and-play”, requiring only power and the copper and fibre interconnections to work. No programming is required and the fibre interface is transparent to the network allowing for standard operation without the need for any additional support.

Part Number	Description	Speed	Cu Connector	Fibre Connector	Fibre Type	Max Distance
MMC-1001	Media converter 1 GB SX MM SC 220/550 mtr	1 Gbit	RJ45	SC Duplex	OM3 or OM4	550m <sup>5</sup>
MMC-1002	Media Converter 1GB LX SM 20 km	1 Gbit	RJ45	SC Duplex	G652D single mode	20km <sup>5</sup>



## Work Series range of cables.

### Garlands Work Series: cost-effective cable without the compromise in

Garland’s WORK Series range of cables offers an alternative to low cost, low quality products currently available on the market. This range of cables utilizes advances in manufacturing and materials to achieve a lower price whilst still maintaining all the performance and quality you have come to expect from Garland cables. Coming with the standard 12 month warranty, we are so confident in the quality of this product that we can include it in our 20 year Structured Cabling Warranty program<sup>6</sup>.

Garland WORK Series products are identified by the letter “W” as the last character in the code. So when you need the quality and performance but not the price, go for Garland WORK Series<sup>7</sup>.

<sup>4</sup>Refer to AS/NZS 11801 or an alternative suitable standard to determine the requirements and limitations of longer transmission distances.

<sup>5</sup>550m is the theoretical maximum distance achieved under laboratory conditions. Actual transmission distances achieved in real life may need to be degraded to allow for environmental factors and additional connector losses.

<sup>6</sup>Subject to meeting the installation criteria of the warranty program. Refer to the Madison Express website for more information.

<sup>7</sup>WORK Series cables do not qualify for the Green Star program.

# Green Star Program.

## Use Garland's Pro Series with confidence for all your Green Star installations

Green Star is a program funded by the Green Building Council of Australia which was developed for the Australian environment. It allows for a building to attract green Star credits which can then be used to offset some of the costs of the construction/project. As an integral part of a building, cabling is also eligible for attracting green Star credits.

Irrespective of whether the cable uses PVC or other materials, Garland's Pro Series cabling has been independently certified as meeting the requirements for the Green Star program and can be used to facilitate the accumulation of Green Star credits.

Pro Series PVC cables also carry the PVC Council of Australia BEP logo confirming that only the best quality and environmentally friendly PVC's are used in Garland's Pro Series cables.



## Build your Green Star PVC Credits with Garland Pro Series Cables



Industrial / Power / Data / Security / Fibre



Garland Pro Series copper cables, the first communications and data cable accredited by the Vinyl Council of Australia.

- LAN & Data
- Security & Fire Control
- Coaxial
- Telephone
- Instrumentation & Control
- Audio Visual

[www.garlandcables.com.au](http://www.garlandcables.com.au)



# 20 Year Structured Cabling Warranty.

The Madison 20 Year Structured Cabling System Warranty is designed to allow you to mix and match the very best features and benefits of multiple voice, data, and optical fibre product brands and solutions.

The Warranty combines the performance and ease-of-installation strengths and benefits of a range of high quality products. The system supports the operation of the standards based applications and protocols you specify, over the appropriate category of end-to-end cabling performance, giving the customer 'peace-of-mind'.

Developed together with consultants and installers, the Madison 20 Year Structured Cabling Warranty has been framed, to allow you the simplest path in any 20 year warranty program. No need for customised training with additional costs and lost work time<sup>8</sup>, no need to be certified by the equipment vendor, no need to spend hours working out the additional requirements.

The System Warranty is provided by Madison Group Enterprises Pty Ltd, trading as Madison Express (ABN 56 010 669 379). For more information phone 1800 66 99 99.

Note: Expansion of the Madison Warranty to incorporate other Garland Cable solutions, such as Security and AV, can be discussed on a case by case basis.



## How To Apply

Follow the simple 5 step program and you can offer a 20 year warranty to any customer.

**Step 1:** Go to the LAN Warranty Page on the Madison Express website. Download the Registration form, fill out all the details, and submit the first page.

**Step 2:** Purchase your Garland or other approved equipment<sup>9</sup> from your local reseller.

**Step 3:** Install the cabling network and test it as you would normally do<sup>10</sup>.

**Step 4:** Complete page 2 of the Registration form and submit it along with the test results and other check list items to Madison Express.

**Step 5:** Receive your 20 Year Structured Cabling Warranty. Sign and return the warranty to Madison Express to complete the process. By signing the certificate you confirm that you have installed the cabling system as per the appropriate standards and verify that you will support the warranty as guided by Madison Express.

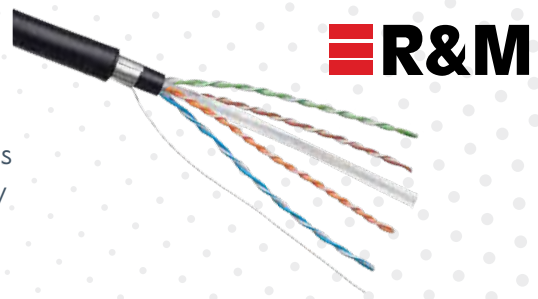
**That's it! Your done.** For a no-nonsense approach to a 20 Year Structured Cabling Warranty, use Garland cables and equipment.

<sup>8</sup>Installers must be ACMA registered for Category cabling.

<sup>9</sup>Brands other than Garland must be approved by Madison in writing prior to installation. Failure to do so may result in the warranty not being issued. Madison reserves the right to reject other vendors equipment at its own discretion.

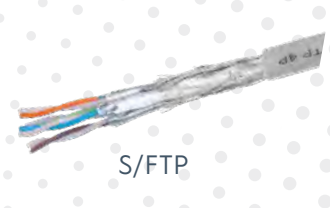
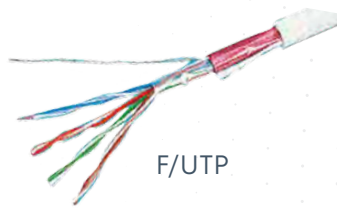
<sup>10</sup>Refer to the application form for approved test equipment.

# Category Copper Cables.



Category cables are used to connect computer network devices such as modems, routers, computers, servers and switches. They are also called network, LAN or Ethernet cables.

Part Number	Category/Construction		Frequency Support	Sheath Type	Packing	AWG	Nominal Diameter
R305649	Cat 6A	S/FTP	650 MHz	LSZH	500m	23	7.1mm to 7.6mm
R308247		U/FTP					
R806969		F/UTP	500 MHz				
R35057	Cat 6	U/UTP	450 MHz		500m	24	6.3mm
R853953			250 MHz			24	5.3mm to 6.2mm



## Mounting Systems.

R&M provides options for mounting. Depending on the installation needs, one mount will better suit your installation compared to another. Certain options, such as high density mounting, can only be achieved with certain mounts.

### Special Mount

The basic mount on which all other mounting systems are based. All EL and ISO jacks can be deconstructed to the "Special Mount" which is designed to accept a number of adapters and allows the use of the high density patch panels.



### Keystone Mount

Popular in North America and many Asian countries, this type of mount is also available locally. It is characterised by a very square opening with sharp corners and a clip in mechanism. R&M Keystone mount jacks come with a pre-fitted adapter to allow them to be used in Keystone openings.



### Clipsal 2000 Series adapters

Available to allow a Freenet mounting jack to be used in faceplates that have a Clipsal Series 2000 compatible mounting. Both un-shuttered and shuttered versions are available and are supplied in white.



### Freenet Mount

The standard mounting system used by R&M. It provides a simpler way to load the jack into a faceplate or patch panel. Freenet jacks are characterised by an adapter that is pre-fitted and has a plate or ledge on the lower side that slides into grooves on the patch panel or faceplate. It is most popular because it is compatible with most of R&M's patch panels and will slide into the Freenet-to-Clipsal Series 2000 adapter.



### Snap-In Mount

Similar in appearance to a Keystone mount but not compatible with it, this mount has a slightly different profile and clipping arrangement. Snap in mounts are used for some of R&M's patch panels. The Snap-in mount may be removed to convert the jack to a Special Mount.



# Copper Termination Modules, Tools & Plugs.



## Termination Connectors

R&M offers different styles of connectors of shielded or unshielded type, including some suitable for commercial fitouts as well as a Keystone Adapter.



Cat. 6 EL UTP - R813507

Part Number	Description	Packing	Details
R813505	Cat. 6A EL STP (Freenet mount)	100	EL = Easy Lock Enterprise all-rounder. Ideally suited to commercial fitouts
R813507	Cat. 6A EL UTP (Freenet mount)	100	
R867745	Cat. 6 EL UTP (Freenet mount)	100	
R509505	Cat. 6A ISO STP (Freenet mount)	100	ISO = Performance. Ideally suited to AV and DC deployments
R837034	Keystone Adapter	24	Keystone adapter retrofits onto either EL or ISO jack
R795209	Module Holder for Clipsal Faceplate - White	100	Fits Clipsal 2000 Series face Plates
R795721	Module Holder for Clipsal Faceplate - Black	100	Fits Clipsal 2000 Series face Plates
R795602	Module Holder with shutter for Clipsal Faceplate - White	100	Fits Clipsal 2000 Series face Plates
R795718	Module Holder with shutter for Clipsal Faceplate - Black	100	Fits Clipsal 2000 Series face Plates



Cat. 6A EL STP  
- R813505



Cat. 6A ISO STP  
- R509505



Keystone Adapter  
- R837034

## Tools

Part Number	Description	Packing	Details
R820784	EL Comfort Termination Tool	1	Comfort tool includes reopening tool
R804325	Preparation Stripping Tool for PiMF Cable	1	Recommended to use for U/FTP, F/FTP & S/FTP
R516050	ISO Termination Tool	1	Terminates all 4 pairs at the same time



Comfort Termination Tool  
- R820784



Cable Stripping Tool  
- R804325



Wiring Termination Tool  
- R516050

# Copper Termination Modules, Tools & Plugs.



## Field Mountable RJ45 (FM45) Modular Plugs

Unplanned network enhancements, limited space, point to point connections and provisional installations are common needs for a quick on-site cable termination. The FM45 is suitable for every need indoors and outdoors.

Part Number	Description	Packing	Details
R312231	FM45 Class E/EA C5e	10	Straight UTP / STP
R815651	FM45 Cat. 6A Component	10	Straight UTP/STP
R845599	FM45 Cat. 6A Component	10	90° Angled UTP



Cat6A Angled UTP  
- R845599



Cat6A Straight UTP/STP  
- R815651

# Copper Patch Panels.



48-Port HD 1U  
- R837065

## Patch Panels

Able to use LC Duplex / SC Simplex with R813483 and R837065.

Part Number	Description	Jack Mounting	Shielding
R795810	24-Port 1U Empty Straight Patch Panel	Keystone mount	Shielded and unshielded
R813483	24-Port 1U Empty Straight Patch Panel	Freet mount	
R837065	48-Port HD 1U Empty Straight Patch Panel	Special mount	
R815656	24-Port 1U Empty Angled Patch Panel	Keystone mount	Shielded
R854758	48-Port HD 1U Empty Angled Patch Panel	Special mount	



24-Port 1U  
- R795810



24-Port 1U Angled  
- R815656



48-Port HD 1U Angled  
- R854758

# Copper Accessories.

## Cable minders



1U 75 mm  
- R795627



1U 110 mm  
- R795375



Part Number	Description	Colour	Details
R795375	Horizontal Cable Minders Closed	Black	High density and robust minders suited to any cable type of any diameter, allowing easy access for MAC's. *recessed
R795627		Black	

\*Protrusion

## Surface Mount Boxes

Part Number	Description	Colour	Packing	Details
R795821	Shuttered Surface Mount Box	White	1	Suitable for keystone mechs Also available with magnet (On request)
R795822		White	1	
R795870		White	1	



1 Port  
- R795821



2 Port  
- R795822



6 Port  
- R795870

## DRM45

Part Number	Description	Packing	Jack mounting
R314000	DIN Rail Module DRM45, plastic	10	Freenet



R314000

# Patch Cords.



## Cat6A Patch Cords

Standard Category 6A, 26 AWG, U/FTP LSZH, 4P, RJ45/u – RJ45/u

Length	Part Numbers	Colour	Packing	Nominal Diameter
0.5 m	R875940	Grey	10	6.0mm Max
1.0 m	R875943	Grey	10	
1.5 m	R875944	Grey	10	
2.0 m	R875945	Grey	10	
3.0 m	R875946	Grey	10	
5.0 m	R875947	Grey	10	
7.5 m	R875948	Grey	10	
10.0 m	R875949	Grey	10	
12.5 m	R875950	Grey	10	
15.0 m	R875951	Grey	10	
20.0 m	R875952	Grey	10	

Standard Category 6A, 26 AWG, S/FTP LSZH, 4P, RJ45/S – RJ45/S

Length	Part Numbers	Colour	Packing	Nominal Diameter
0.5 m	R509857	Grey	10	6.0mm Max
1.0 m	R509858	Grey	10	
1.5 m	R509860	Grey	10	
2.0 m	R509861	Grey	10	
3.0 m	R509862	Grey	10	
5.0 m	R509863	Grey	10	
7.5 m	R509864	Grey	10	
10.0 m	R509865	Grey	10	
12.5 m	R509866	Grey	10	
15.0 m	R509867	Grey	10	
20.0 m	R509868	Grey	10	

Thinline Category 6A, 30 AWG, U/FTP LSZH, 4P, RJ45/u – RJ45/u

Length	Part Numbers	Colour	Packing	Nominal Diameter
0.5 m	R876009	Grey	10	4.7mm Max
1.0 m	R876010	Grey	10	
1.5 m	R876011	Grey	10	
2.0 m	R876012	Grey	10	
3.0 m	R876013	Grey	10	
5.0 m	R876014	Grey	10	
7.5 m	R876015	Grey	10	
10.0 m	R876016	Grey	10	
12.5 m	R876017	Grey	10	
15.0 m	R876018	Grey	10	
20.0 m	R876019	Grey	10	

# Patch Cords.



## Cat6 Patch Cords

Standard Category 6, 26 AWG, U/UTP LSZH, 4P, RJ45/u – RJ45/u

Length	Part Numbers	Colour	Packing	Nominal Diameter
0.5 m	R875975	Grey	10	6.0mm Max
1.0 m	R875976	Grey	10	
1.5 m	R875977	Grey	10	
2.0 m	R875978	Grey	10	
3.0 m	R875979	Grey	10	
5.0 m	R875980	Grey	10	
7.5 m	R875981	Grey	10	
10.0 m	R875982	Grey	10	
12.5 m	R875983	Grey	10	
15.0 m	R875984	Grey	10	
20.0 m	R875985	Grey	10	

Thinline Category 6, 28 AWG, U/UTP LSZH, 4P, RJ45/u – RJ45/u

Length	Part Numbers	Colour	Packing	Nominal Diameter
0.5 m	R876031	Grey	10	4.0mm Max
1.0 m	R876032	Grey	10	
1.5 m	R876033	Grey	10	
2.0 m	R876034	Grey	10	
3.0 m	R876035	Grey	10	
5.0 m	R876036	Grey	10	
7.5 m	R876037	Grey	10	
10.0 m	R876038	Grey	10	
12.5 m	R876039	Grey	10	
15.0 m	R876040	Grey	10	
20.0 m	R876041	Grey	10	

# Copper Security System.



Individual color coding clip for R&M patch cords used for service segregation and patching identification. Exchangeable and re-usable.

Part Number	Description	Packing	Details
R302345	Yellow	20	Only suited for R&M patch cord
R302348	Green	20	
R302420	Purple	20	



# Connect with us.

**Call** 1800 66 99 99

[www.madisonexpress.com.au](http://www.madisonexpress.com.au)

**Brisbane** Head Office  
Level 2, Building 1  
61 Metroplex Ave  
Murarrie QLD 4172

**Melbourne**  
51 Barclay Road  
Derrimut VIC 3026

**Sydney**  
149 Beaconsfield Street  
Silverwater NSW 2128

**Perth**  
73 Boulder Road,  
Malaga WA 6090

