



garland

# Garland Screened CAT6A Patch Panel

- Angled jacks for reduced strain on both the patch leads and patch panel
- Over-and-Under jack arrangement for improved cable and patch cord routing
- Toolless IDC connectors
- Rear Cable manager included
- Modern silver finish

The new Garland screened Cat6A patch panel with angled jacks offers a fresh alternative to traditional angled patch panels.

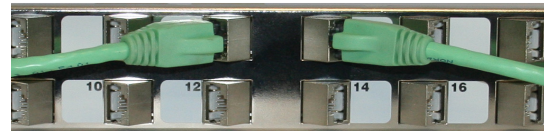
Whereas the traditional approach has been to angle the patch panel face, taking up valuable space between the rack and its door, these new patch panels from Garland angle the jack rather than the patch panel.

The benefits of this approach include additional clearance between the patch panel and cabinet door as well as relieving strain on the screened patch cords. The over-and-under arrangement of the jack outlets also frees up additional room making for a neater and easier to maintain arrangement.

The metal screened jacks feature a toolless IDC with a winged closure ensuring even and reliable connection.

Once connectorized, the angled jacks are easily loaded into the back of the matching silver coloured patch panel which is clearly labelled with silk screened numbers.

Supplied in a single package that contains the unloaded patch panel, 24 screened angled jacks, a solid cable management bar and all ancillary items, Garlands unique approach is designed for the discerning buyer who is after a value for money solution.



## Application

Cat6A patch panels are used in structured cabling systems to facilitate the patching of digital signals between routers, hubs, workstations, desks and wall mounted outlets. They can be used to manage IP signals as they travel between devices such as cameras, monitors, phones, wireless hubs and routers.

Screened Cat6A patch panels are tested to 600MHz and are suitable for Class F links and channels.

## Connects to

- Cat5e, Cat6 and Cat6A U/UTP, F/UTP and S/FTP cable
- LAN routers and wireless hubs
- PABX's and IP phone systems
- IP based security devices, alarms and cameras

## Ordering Information

Part Number	Description
MT6AL4524M	Screened Cat6A patch panel with angled jacks

With Garland, you are always well connected.

Sales Enquiries **1800 66 99 99**

[www.garlandcables.com.au](http://www.garlandcables.com.au)

made by



madison