



# CR2 Series 2 r6

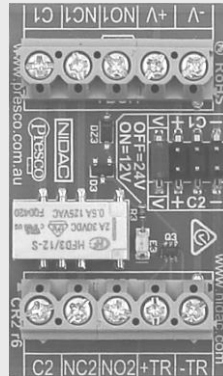
## 2 Pole – Double Throw Control Relay

### Features:

- ◆ 12 or 24 Volt D.C. operation.
- ◆ 2 Pole change over contacts.
- ◆ 2 Amp. rated relay.
- ◆ Low 1.2 mA input current.
- ◆ In-built –TR pull-up resistor.
- ◆ LED indicates operation.
- ◆ Double sided tape mounting.
- ◆ Can jumper +VE or –VE to common contacts (C1 & C2).

### Applications:

- ◆ Dialler interface.
- ◆ Electric Door Strike.
- ◆ SIU interface.
- ◆ Strobe lamp driver.
- ◆ Voltage level shifting.



(Actual size)

[www.presco.com.au](http://www.presco.com.au)

### Links:



C1 contact is voltage free (C1 Link OFF).  
C2 contact is voltage free (C2 Link OFF).  
21 to 28V D.C. operation (V Link OFF).



10 to 18V D.C. operation (V Link ON).



C1 contact connected to -V terminal.



C1 contact connected to +V terminal.



C2 contact connected to -V terminal.



C2 contact connected to +V terminal.

### Notes:

- **Danger!!!** Don't use 240V through contacts as they are only rated for 30V D.C.
- Use either +TR or –TR, but **not both** at same time.
- If using a strip of 6 CR2s connect any one of the +V and –V terminals as they are bussed through the strip to each unit.

### Specifications: (all voltages D.C.)

- Operating voltage = 10 - 18V (V Link ON)  
21 - 28V (V Link OFF).
- Maximum switch current = 2A at 30V
- Life expectancy = 100,000 operations at full load.
- +TR trigger = 2 to +V, 1.2 mA @ 12V, 2.4mA @ 24V.
- –TR trigger = 0 to (+V - 2V), -1.2 mA @ 12V, -2.4mA @ 24V.
- Dimensions: (Width x Depth x Height)  
Single Unit - 50mm x 31mm x 15mm  
Strip of 6 - 50mm x 186mm x 15mm

**Manufactured by Nidac Security Pty. Ltd.**  
2 Cromwell St, Burwood, VIC, 3125  
p: (03) 9808 6244 f: (03) 9808 9335 e: sales@nidac.com