

19" Floor Standing 600 Wide Rack-Mount Enclosure

18/27/42RU

Features

All REDBACK RACKS are designed to be easier to use and quicker to install:

- Metal shelves come pre-installed
- Works with SA.6502 quick install modular fans
- Heavy duty castors fitted, levelling feet included
- Cage nuts included
- Toughened glass front door alleviates static, electricity and interference
- Vented/Perforated rear door with lock
- Removable cable entry plates on top & bottom of cabinet
- Removable side panels for ease of access
- Front/rear vertical mounting rails can be re-positioned
- Earth continuity leads fitted to every panel

Reliability and quality is paramount for REDBACK RACKS, rest assured all items have:

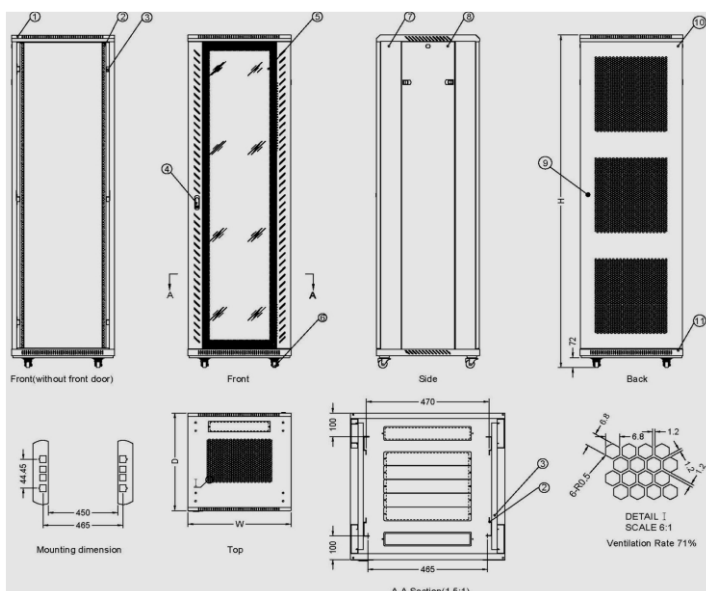
- 1.2-1.5mm metal thickness (2.0mm on mounting profile)
- Fully assembled with rigid welded internal frame
- Powder coated finish
- IP20 rating
- Can take up to 800kgs on leveling feet



Standards

- Complies with ANSI/EIA RS-310-D
- DIN41497 part 1
- IEC297-2, DIN41494 part 7
- ETSI standard

Structure



1	Top cover
2	Mounting profile
3	Mounting angle
4	Moon-shaped lock
5	Glass front door
6	4 heavy duty castors
7	Frame
8	Side panel
9	Small round lock
10	Hexagonal-hole rear door
11	Bottom panel

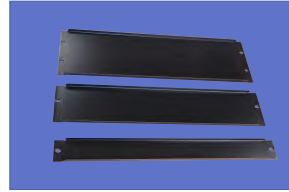
Accessories



Vented metal front door
AD1618/27/42 18/27/42RU



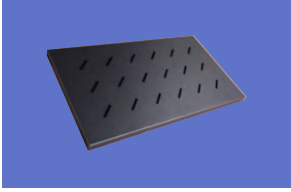
Digital temperature unit
SA.4903 1RU



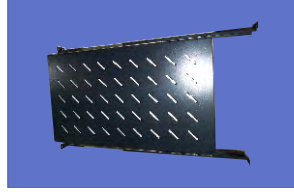
Blanking plate
SA.1201/02/03/04 1/2/3/4RU



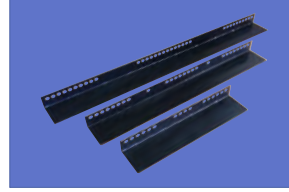
1RU Fan unit with 4 fans
SA.2904



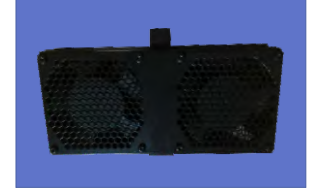
Fixed shelf
SA.0160 for 600 depth
SA.0180 for 800 depth
SA.0196 for 1000 depth



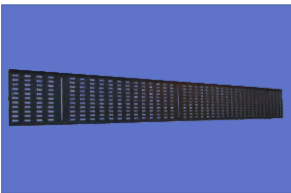
Sliding shelf with mounting ear
SA.0660 for 600 depth
SA.0680 for 800 depth
SA.0696 for 1000 depth



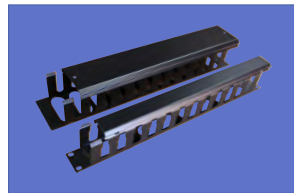
2 x L Rails
SA.3860 for 600 depth
SA.3880 for 800 depth
SA.3896 for 1000 depth



Fan Tray
1 x SA.6502 for 600 depth
2 x SA.6502 for 800 depth
3 x SA.6502 for 1000 depth



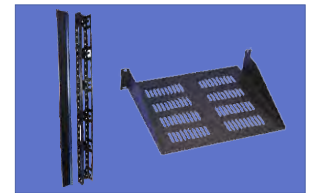
Cable tray
SA.6442 200mm 42RU



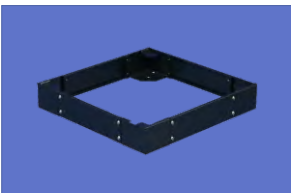
**Horizontal cable management
- Slotted duct type**
SA.1701/02 1/2RU



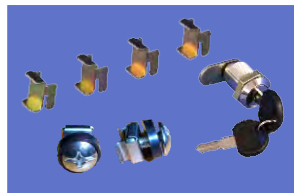
**Horizontal cable management
- Loop type** SA.1801 1RU
Cable ring SA.3400



Vertical cable management
SA.4618/27/42 18/27/42RU
Cantilever shelf-III
SA.2452 2RU 15''



Plinth
SA.0966 for 600 depth
SA.0968 for 800 depth
SA.0960 for 1000 depth



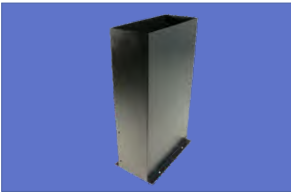
Cage nuts - 20 sets SA.5202
2 x Side locks SA.4531
Baying kit - 4 brackets SA. 4110



19'' Rack mount DIN rail kit
DIN20-3RU 3RU



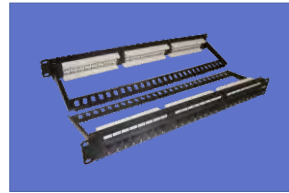
PDU
SA.0806 6 Aus outlets, horizontal
SA.0810 10 Aus outlets, vertical
SA.0815 15 Aus outlets, vertical
SW.0816 16 Aus outlets, horizontal
SA.1793 15 IEC outputs, vertical



Fixed chimney
SA.9860 650mm height
SA.9859 900mm height



UPS
1-10KVA



Patch panels
Cat 6/24 1RU
Cat 6a/24 1RU

Specifications

Model	Capacity	Width (mm)	Depth (mm)	Height (mm)	Weight (kg)	Shelves (pcs)	Cage Nuts (sets)
A4.6618	18RU	600	600	988	54	2	20
A4.6627	27RU			1388	73	3	20
A4.6642	42RU			2055	96	3	40
A4.6818	18RU	600	800	988	63	2	20
A4.6827	27RU			1388	88	3	20
A4.6842	42RU			2055	109	3	40
A4.6018	18RU	600	1000	988	72	2	20
A4.6027	27RU			1388	99	3	20
A4.6042	42RU			2055	118	3	40

Specifications are subject to change without prior notice.

