

Weatherproof Outdoor Racks

6/18/37RU

Features

All REDBACK RACKS are designed to be easier to use and quicker to install:

- Compatible with all 19" rack equipment and accessories
- Secure doors with 3-point locking system
- Polyurethane gasket on front door locking system
- Lockable protective cover on front door lock
- 6 sides sealed with IP55 rating
- 3 section bottom panel with cable entry glands
- High corrosion resistance
- Powder coated finish
- Supplied with heavy duty plinth for the 18 & 37RU
- Provision for air conditioning or fan forced cooling (optional)
- Wall mount rails included for 6RU

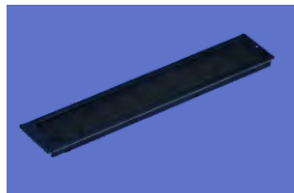
Standards

- Complies with: IEC60529, EN60529/10.91 & GB4208-93
- Vibration testing: IEC 68-2-6
- Earthquake resistance: GR-63-CORE

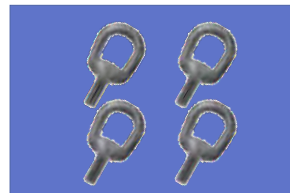
Accessories



2 x Cooling fans with plug
SA.3322



Cable entry
SA. 5500



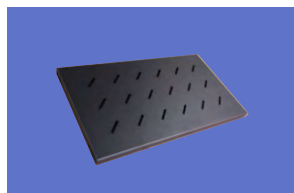
Lifting eyes



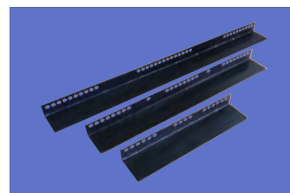
Plinth
SA. 0041



Air conditioner



Fixed shelf
SA.0160 for 600-depth cabinets



2 x L Rails
SA.3860 for 600-depth cabinets



CC.6406



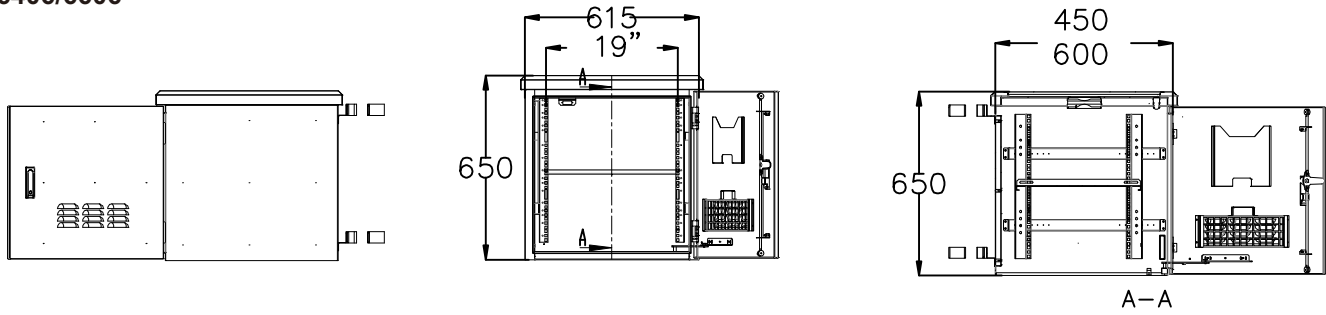
CC.6606



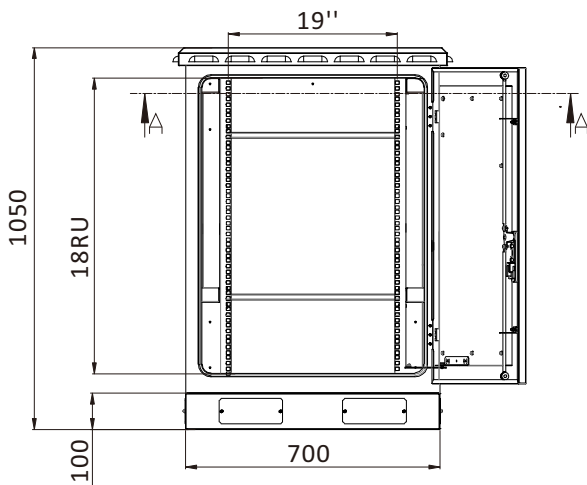
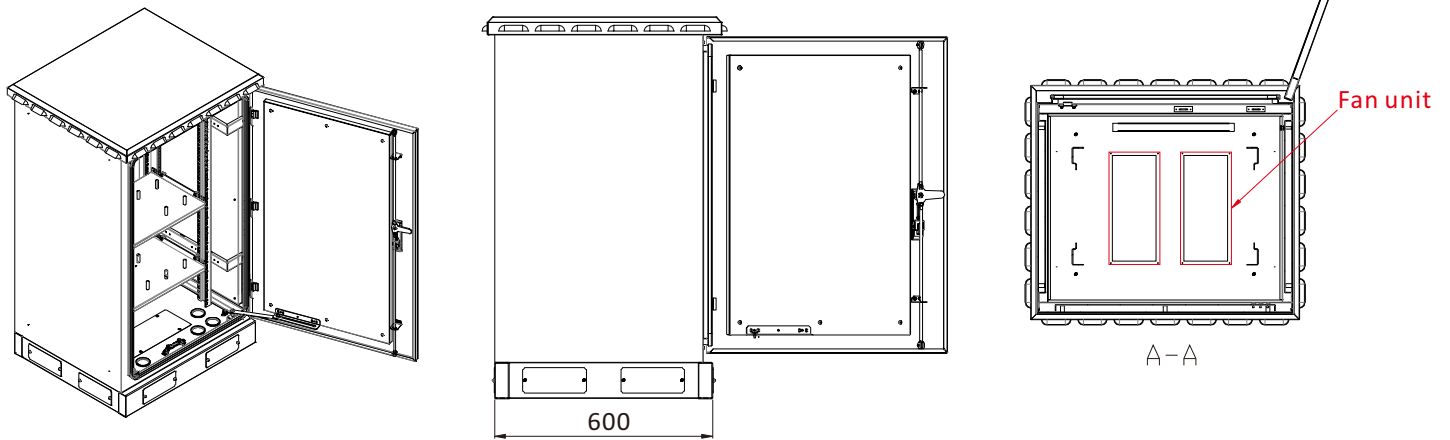
CC.6618 / CC.6637

Structure

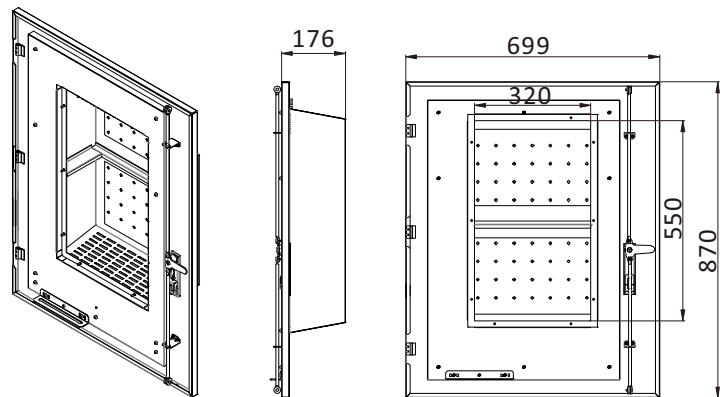
CC.6406/6606



CC.6618/6637



Air Conditioner door for 18RU and 37RU



Specifications

Model	Capacity	Width (mm)	Depth (mm)	Height (mm)	Packing (WxDxH)
CC.6406	6RU	615	450	640	665x550x780
CC.6606	6RU	615	600	650	665x665x780
CC.6618	18RU	600	600	1063	670x670x1093
CC.6637	37RU	600	600	1903	670x670x1933

Specifications are subject to change without prior notice.

