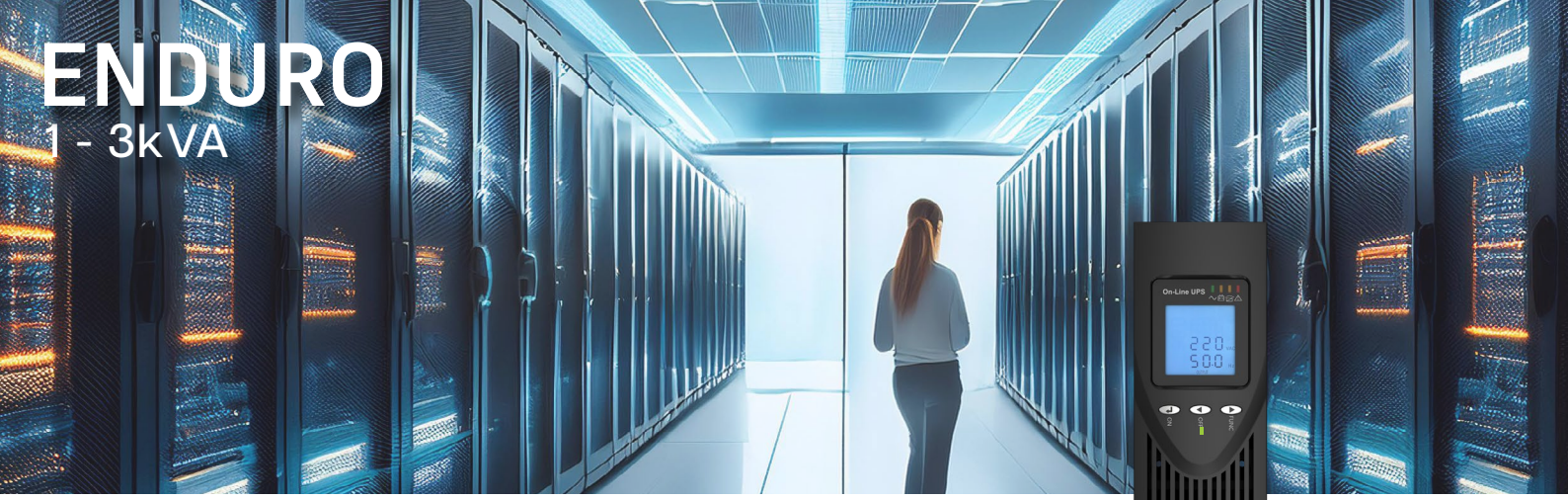


ENDURO

1 - 3kVA



Designed with flexibility in mind, it allows you to add up to **4 extra battery modules (EBM)** to extend runtime, ensuring continuous operation during prolonged power outages.

Featuring **Double Online Conversion technology**, it offers the highest level of protection against power disturbances, ensuring clean, uninterrupted power for sensitive equipment. For more extended run times, **long-run units** are also available, making the Enduro Series a robust choice for businesses requiring extended backup power.



SCAN / CLICK
FOR MORE DETAILS



Online Double Conversion



Rack/Tower Mount



SNMP/Relay Option

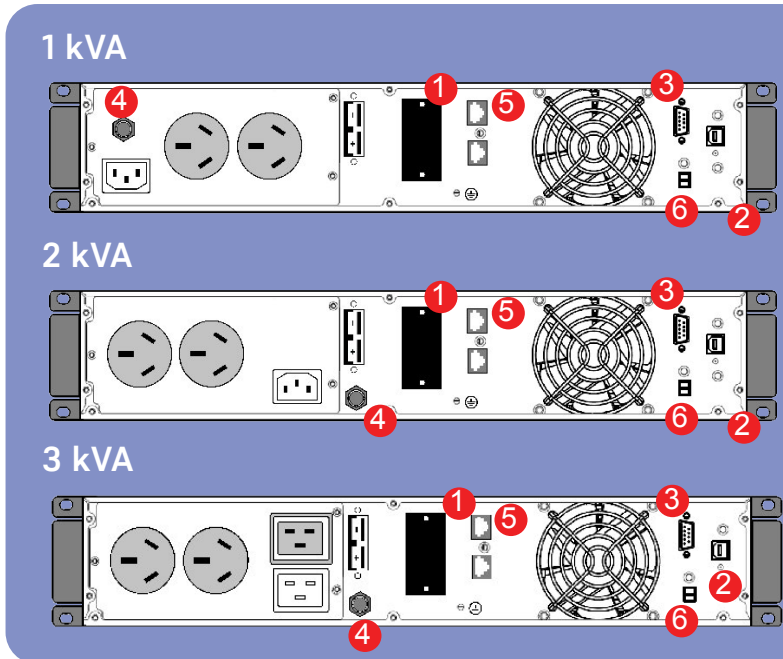
RUNTIMES

	200W/ 200VA	300W/ 300VA	400W/ 400VA	600W/ 600VA	800W/ 800VA	1000W/ 1000VA	1200W/ 1200VA	1400W/ 1400VA	1600W/ 1600VA	1800W/ 1800VA	2000W/ 2000VA	2200W/ 2200VA	2400W/ 2400VA
EN1-RT	43m	25m	15m	9m									
EN1-1-RT	2h 55m	1h 48m	1h 13m	43m	28m								
EN1-2-RT	5h 53m	3h 22m	2h 21m	1h 27m	56m								
EN1-3-RT	8h 29m	5h 17m	3h 36m	2h 6m	1h 33m								
EN1-4-RT	11h 58m	7h 17m	4h 58m	2h 55m	1h 59m								
EN2-RT	1h 48m	59m	43m	25m	15m	11m	9m	7m					
EN2-1-RT	7h 17m	4h 15m	2h 55m	1h 48m	1h 13m	54m	43m	33m	28m				
EN2-2-RT	13h 53m	7h 59m	5h 53m	3h 22m	2h 21m	1h 48m	1h 27m	1h 6m	56m				
EN2-3-RT	18h 48m	12h 39m	8h 29m	5h 17m	3h 36m	2h 43m	2h 6m	1h 48m	1h 33m				
EN2-4-RT	23h 19m	16h 45m	11h 58m	7h 17m	4h 58m	3h 43m	2h 55m	2h 27m	1h 59m				
EN3-RT	1h 48m	59m	43m	25m	15m	11m	9m	7m					
EN3-1-RT	7h 17m	4h 15m	2h 55m	1h 48m	1h 13m	54m	43m	33m	28m	25m	22m	18m	15m
EN3-2-RT	13h 53m	7h 59m	5h 53m	3h 22m	2h 21m	1h 48m	1h 27m	1h 6m	56m	50m	43m	37m	31m
EN3-3-RT	18h 48m	12h 39m	8h 29m	5h 17m	3h 36m	2h 43m	2h 6m	1h 48m	1h 33m	1h 18m	1h 3m	56m	52m
EN3-4-RT	23h 19m	16h 45m	11h 58m	7h 17m	4h 58m	3h 43m	2h 55m	2h 27m	1h 59m	1h 48m	1h 36m	1h 24m	1h 13m

In support of our policy of continuous product improvement, we reserve the right to change materials and specifications without notice. Drawings, where used, are not to scale. All dimensions provided are approximate. Where applicable, Safety Data Sheets (SDS) are made available on the website. All products should be installed and used in accordance with the manufacturer's instructions where provided, or otherwise in line with recognised industry best practice. Products may be the subject of registered designs and patents. Refer to the website for terms and conditions on warranty. To the maximum extent permitted by law, the manufacturer is not liable for damage resulting from misuse or reliance on this information. Some content on this datasheet may have been generated or enhanced using AI tools and has been reviewed by our technical team for accuracy and relevance.

Rear Panel

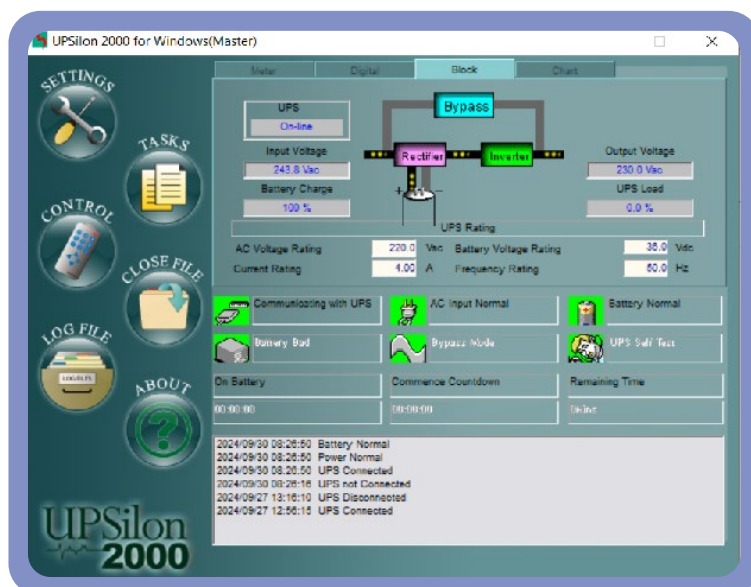
- 1 - Intelligent slot (SNMP card, dry contact etc.)
- 2 - USB port
- 3 - RS-232 port
- 4 - Input breaker
- 5 - RJ45 surge protection
- 6 - EPO



UPSilon Software

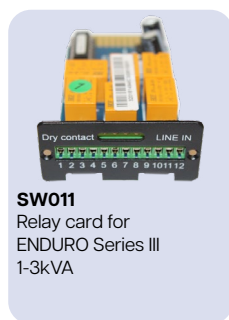
All units include UPSILON software as a standard.

- ✓ USB connected for monitoring, notifying and logging parameter.
- ✓ SMS or Email alerts for power failure, battery life.

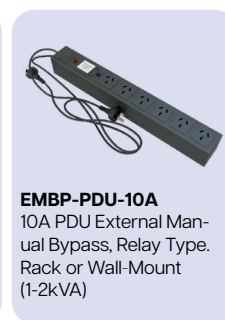


Accessories

Communication Accessories



Recommended Accessories



In support of our policy of continuous product improvement, we reserve the right to change materials and specifications without notice. Drawings, where used, are not to scale. All dimensions provided are approximate. Where applicable, Safety Data Sheets (SDS) are made available on the website. All products should be installed and used in accordance with the manufacturer's instructions where provided, or otherwise in line with recognised industry best practice. Products may be the subject of registered designs and patents. Refer to the website for terms and conditions on warranty. To the maximum extent permitted by law, the manufacturer is not liable for damage resulting from misuse or reliance on this information. Some content on this datasheet may have been generated or enhanced using AI tools and has been reviewed by our technical team for accuracy and relevance.

Model	EN1-RT	EN2-RT	EN3-RT
Capacity	1000VA/900W	2000VA/1800W	3000VA/2700W
Display	LED and LCD		
Input			
Input Voltage	184 - 276V		
Input Powerfactor	≥ 0.98		
Input Plug	Aus standard 10Amp	15Amp	
Short Circuit	Resettable Fuse		
Output			
Voltage regulation	230V +/-2% User settable		
Output sockets	2 x AUS 10A 1 x IEC 15A	3 x AUS 10A 1 x IEC 15A	
Output Powerfactor	0.9		
Frequency	50Hz +/- 0.1Hz		
Waveform	Pure Sine Wave		
Transfer time	0 Seconds		
Battery			
Type	Sealed Lead Acid		
Recharge Time	6 - 8 hours to 90%		
Communications and management			
Communication	USB and RS-232 standard		
Display Indication	Load, battery, input, output, operating		
Software Supplied	UPSilon		
DC start / Cold Start	YES		
Auto restart	YES		
Protection			
Surge protection	2200 Joules / 60,000 Amps		
Short circuit	Reasetable Fuse		
Efficiency	≥ 89-92% Normal mode, up to 97% ECO Mode		
Safety Regulations	IEEE 587		
EMC Standards	EN50091-2, C Tick/RCM		
Environment			
Audible noise	<30dB at 1m	<35dB at 1m	
Temperature operating range	0 - 40 Degrees		
Humidity	0 - 95% (non-condensing)		
Physical			
Ventilation Requirements	100mm clearance front and rear		
Accessories Supplied	Feet, Rack ears & 1 x 10A Input cable RK1000 required for rack mounting.	Feet, Rack ears & 1 x 15A Input cable. RK1000 required for rack mounting.	

In support of our policy of continuous product improvement, we reserve the right to change materials and specifications without notice. Drawings, where used, are not to scale. All dimensions provided are approximate. Where applicable, Safety Data Sheets (SDS) are made available on the website. All products should be installed and used in accordance with the manufacturer's instructions where provided, or otherwise in line with recognised industry best practice. Products may be the subject of registered designs and patents. Refer to the website for terms and conditions on warranty. To the maximum extent permitted by law, the manufacturer is not liable for damage resulting from misuse or reliance on this information. Some content on this datasheet may have been generated or enhanced using AI tools and has been reviewed by our technical team for accuracy and relevance.

SKU	Configuration	Battery Qty	UPS Dimensions (HxWxD) mm	Battery Bank(BB) Dimensions (HxWxD) mm	Total Weight
EN1-RT	Enduro 1kVA UPS	3 x 12V 9AH	87 (2RU) x 440 x 430/ 15.1kg	NA	15.1Kg
EN1-1-RT	Enduro 1kVA UPS + 1 x BB	9 x 12V 9AH	87 (2RU) x 440 x 430/ 15.1kg	1 x 87 (2RU) x 440 x 430/ 20kg	35.1Kg
EN1-2-RT	Enduro 1kVA UPS + 2 x BB	15 x 12V 9AH	87 (2RU) x 440 x 430/ 15.1kg	2 x 87 (2RU) x 440 x 430/ 20kg	55.1Kg
EN1-3-RT	Enduro 1kVA UPS + 3 x BB	21 x 12V 9AH	87 (2RU) x 440 x 430/ 15.1kg	3 x 87 (2RU) x 440 x 430/ 20kg	75.1Kg
EN1-4-RT	Enduro 1kVA UPS + 4 x BB	27 x 12V 9AH	87 (2RU) x 440 x 430/ 15.1kg	4 x 87 (2RU) x 440 x 430/ 20kg	95.1Kg
EN2-RT	Enduro 2kVA UPS	6 x 12V 9AH	87 (2RU) x 440 x 595 / 26.3kg	NA	26.3Kg
EN2-1-RT	Enduro 2kVA UPS + 1 x BB	18 x 12V 9AH	87 (2RU) x 440 x 595 / 26.3kg	1 x 86.5 (2RU) x 440 x 710/ 33kg	59.3Kg
EN2-2-RT	Enduro 2kVA UPS + 2 x BB	30 x 12V 9AH	87 (2RU) x 440 x 595 / 26.3kg	2 x 86.5 (2RU) x 440 x 710/ 33kg	92.3Kg
EN2-3-RT	Enduro 2kVA UPS + 3 x BB	42 x 12V 9AH	87 (2RU) x 440 x 595 / 26.3kg	3 x 86.5 (2RU) x 440 x 710/ 33kg	125.3Kg
EN2-4-RT	Enduro 2kVA UPS + 4 x BB	54 x 12V 9AH	87 (2RU) x 440 x 595 / 26.3kg	4 x 86.5 (2RU) x 440 x 710/ 33kg	158.3Kg
EN3-RT	Enduro 3kVA UPS	6 x 12V 9AH	87 (2RU) x 440 x 595 / 26.8kg	NA	26.8Kg
EN3-1-RT	Enduro 3kVA UPS + 1 x BB	18 x 12V 9AH	87 (2RU) x 440 x 595 / 26.8kg	1 x 86.5 (2RU) x 440 x 710/ 33kg	59.8Kg
EN3-2-RT	Enduro 3kVA UPS + 2 x BB	30 x 12V 9AH	87 (2RU) x 440 x 595 / 26.8kg	2 x 86.5 (2RU) x 440 x 710/ 33kg	92.8Kg
EN3-3-RT	Enduro 3kVA UPS + 3 x BB	42 x 12V 9AH	87 (2RU) x 440 x 595 / 26.8kg	3 x 86.5 (2RU) x 440 x 710/ 33kg	125.8Kg
EN3-4-RT	Enduro 3kVA UPS + 4 x BB	54 x 12V 9AH	87 (2RU) x 440 x 595 / 26.8kg	4 x 86.5 (2RU) x 440 x 710/ 33kg	158.8Kg

*BB = External Battery Bank

In support of our policy of continuous product improvement, we reserve the right to change materials and specifications without notice. Drawings, where used, are not to scale. All dimensions provided are approximate. Where applicable, Safety Data Sheets (SDS) are made available on the website. All products should be installed and used in accordance with the manufacturer's instructions where provided, or otherwise in line with recognised industry best practice. Products may be the subject of registered designs and patents. Refer to the website for terms and conditions on warranty. To the maximum extent permitted by law, the manufacturer is not liable for damage resulting from misuse or reliance on this information. Some content on this datasheet may have been generated or enhanced using AI tools and has been reviewed by our technical team for accuracy and relevance.