

Compact Enclosures


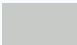
**NEW
IMPROVED**



Features

- Fan vents with insect screen (blanking plates supplied without fans)
- Polyurethane gasket between cabinet and all covers to ensure IP integrity
- Cabinet can be either Pole or Wall mounted
- Solid back with pole mounting rails & 4 x wall mounting ears
- Solid front door with two secure locks
- Multi-folded periphery to ensure a reliable seal on door
- Sealed gland plate
- Adjustable mounting plate
- Door opens 110 degrees with standard hinge
- Polyurethane gasket around the entire door
- Welded frame for structural strength
- IP66 or IP55 Rated determined by vents
- 1 x 30cm earthing cable included

Material and Finishing

Item	Material & Size	Finish	Colour
Mounting Plate	2.0mm SPCC cold rolled steel	Aluminized zinc	Zinc 
Door and Body	1.5mm SPCC cold rolled steel	Powder coated	RAL7035 

Protection and Size

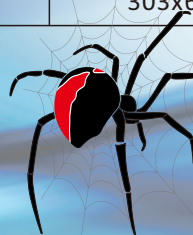
Complies with IEC60529 and EN60529/10.91

Model	Width (mm)	Depth (mm)	Height (mm)	Gland Plate Size(mm)	IP	Lock(s)	Packing(mm)
GB.1034S	300	210	400	233x45	IP55	1	330x240x430
GB.1038S	380	210	600	303x63	IP55	2	410x240x630
GB.6080S	600	210	800	303x63	IP55	2	630x240x830

Specifications are subject to change without prior notice.



Power Systems Solutions

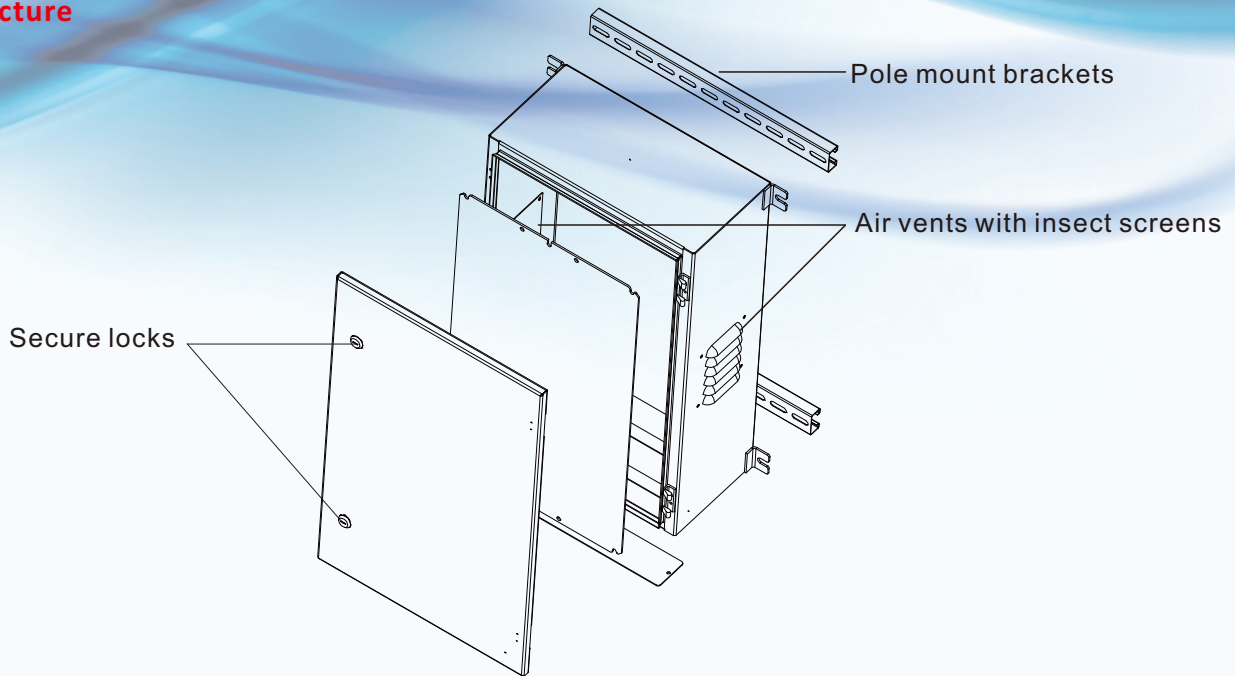


**REDBACK
RACKS**

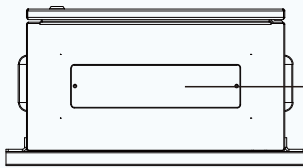
Compact Enclosures

**NEW
IMPROVED**

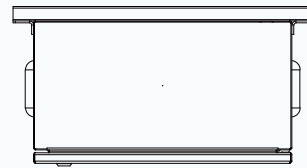
Main Structure



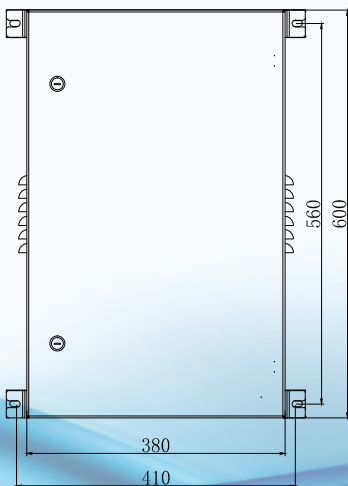
Bottom



Top



Front

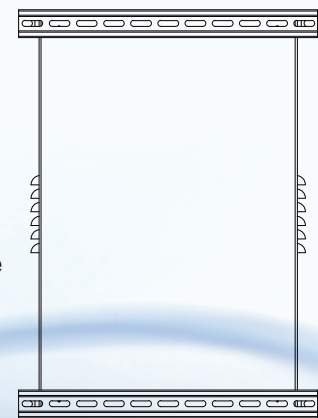


Side

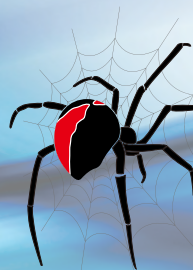


Blanking plate with polyurethane gasket

Back



Power Systems Solutions



**REDBACK
RACKS**