

# Compact Enclosures


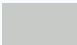
**NEW  
IMPROVED**



## Features

- Fan vents with insect screen (blanking plates supplied without fans)
- Polyurethane gasket between cabinet and all covers to ensure IP integrity
- Cabinet can be either Pole or Wall mounted
- Solid back with pole mounting rails & 4 x wall mounting ears
- Solid front door with two secure locks
- Multi-folded periphery to ensure a reliable seal on door
- Sealed gland plate
- Adjustable mounting plate
- Door opens 110 degrees with standard hinge
- Polyurethane gasket around the entire door
- Welded frame for structural strength
- IP66 or IP55 Rated determined by vents
- 1 x 30cm earthing cable included

## Material and Finishing

Item	Material & Size	Finish	Colour
Mounting Plate	2.0mm SPCC cold rolled steel	Aluminized zinc	Zinc 
Door and Body	1.5mm SPCC cold rolled steel	Powder coated	RAL7035 

## Protection and Size

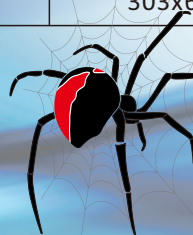
Complies with IEC60529 and EN60529/10.91

Model	Width (mm)	Depth (mm)	Height (mm)	Gland Plate Size(mm)	IP	Lock(s)	Packing(mm)
GB.1034S	300	210	400	233x45	IP55	1	330x240x430
GB.1038S	380	210	600	303x63	IP55	2	410x240x630
GB.6080S	600	210	800	303x63	IP55	2	630x240x830

Specifications are subject to change without prior notice.



Power Systems Solutions

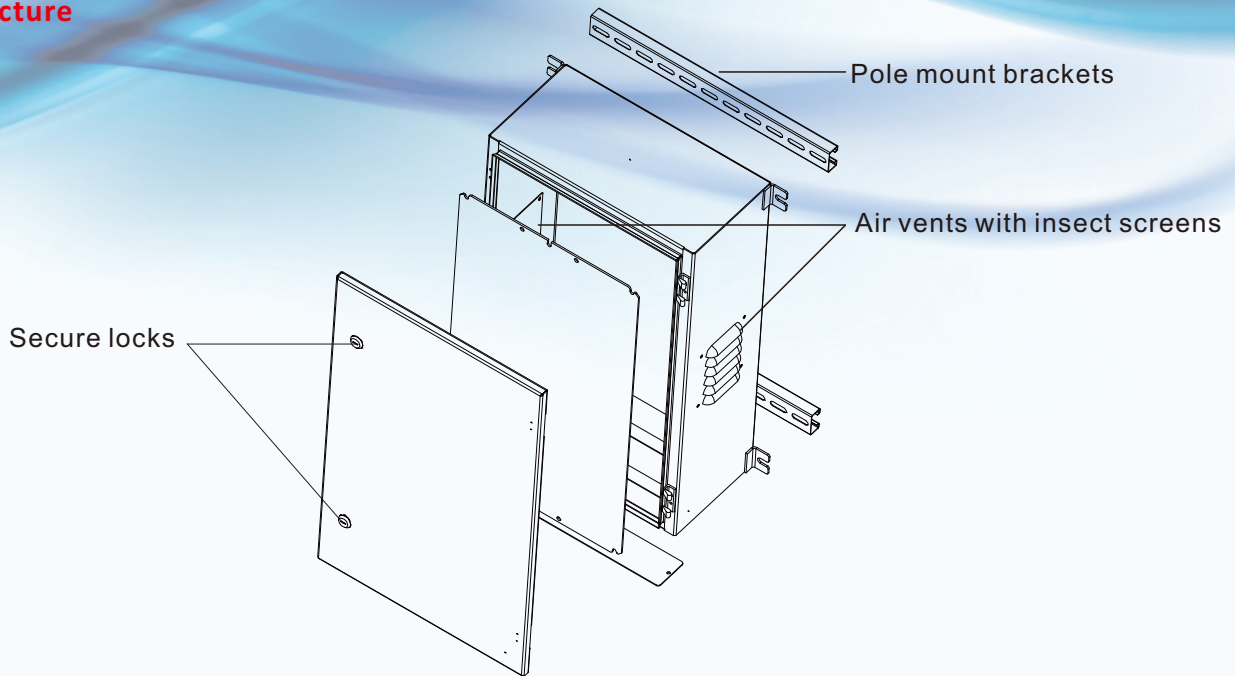


**REDBACK  
RACKS**

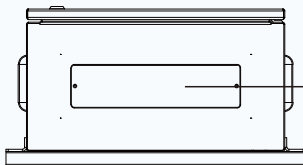
# Compact Enclosures

**NEW  
IMPROVED**

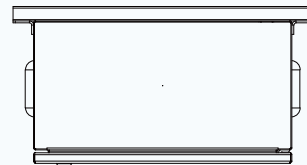
**Main Structure**



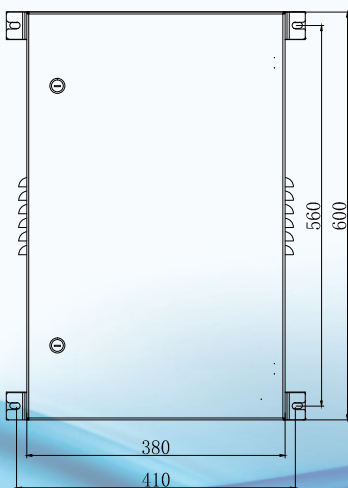
Bottom



Top



Front

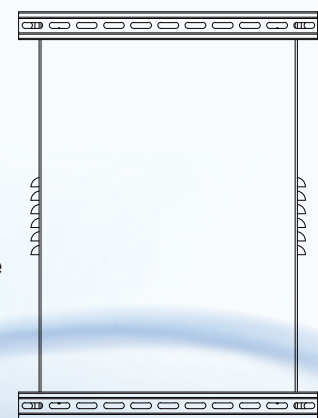


Side



Blanking plate with polyurethane gasket

Back



Power Systems Solutions



**REDBACK  
RACKS**