

# 12-24VDC Triggered Relay

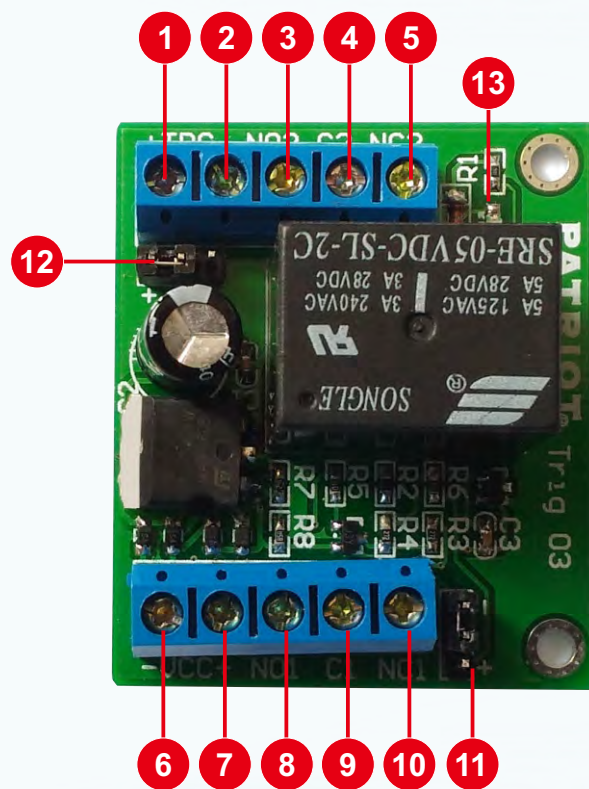


## Features

- 12-24VDC triggered relay
- Option for positive or negative trigger
- 2 x sets of change over contacts

## Layout

1. Trigger Input (+ Positive)
2. Trigger Input (- Negative)
3. Relay 2 - Common
4. Relay 2 - NC
5. Relay 2 - NO
6. 12V Input (- Negative)
7. 12V Input (+ Positive)
8. Relay 1 - Common
9. Relay 1 - NC
10. Relay 1 - NO
11. Positive/Negative Trigger Link
12. Positive/Negative Trigger Link
13. Relay Operating LED



## Specifications

Model:	Trig 03
Input Voltage:	8-24V DC or AC
Contact Rating:	3A @ 250V AC / 28V DC
Size:	50 x 43 mm

