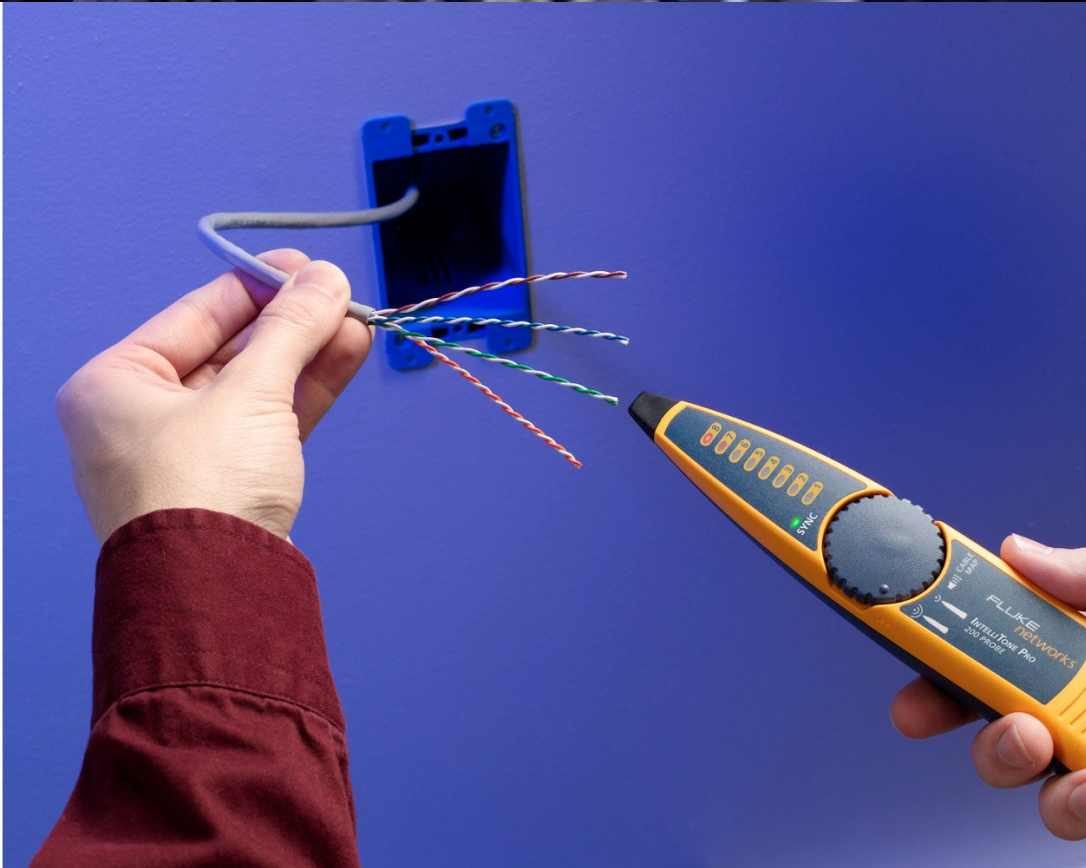
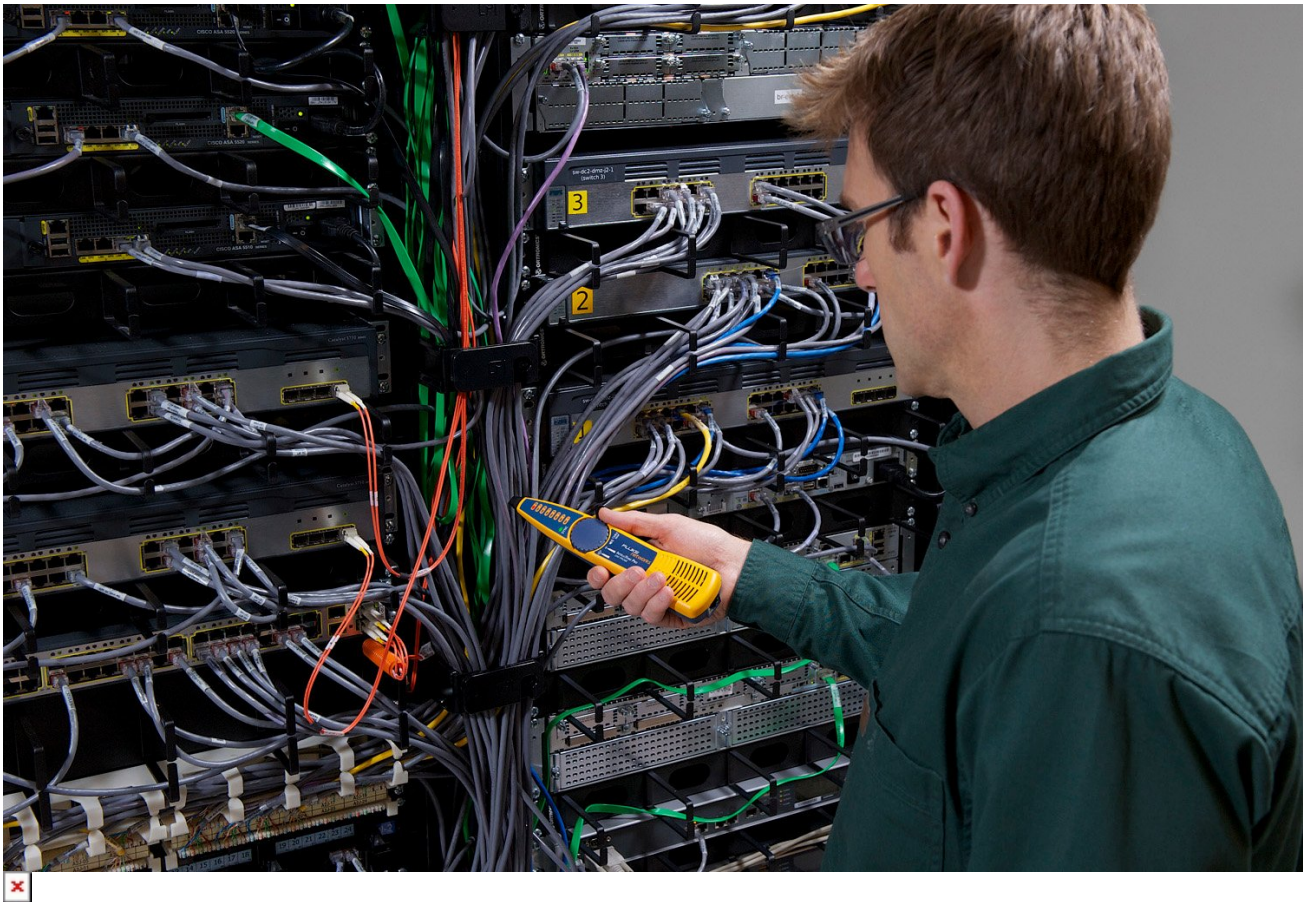


TECHNICAL DATA

Fluke Networks MT-8200-63A IntelliTone™ Pro 200 Probe







Key features

- Detects IntelliTone™ digital signals on active networks
- Includes: IntelliTone™ Pro 200 probe, RJ11 and RJ 45 patch cables, 9-V battery
- Identifies signals audibly and with 8 LEDs
- LED shows battery strength at power up and confirms signals
- Turns off automatically after 1 hour of inactivity

Product overview: Fluke Networks MT-8200-63A IntelliTone™ Pro 200 Probe

MT-8200-63A Probe detects IntelliTone™ digital signals on active networks and 500 to 1,200 Hz analog signals on inactive networks to locate, trace, and isolate copper cabling

Specifications: Fluke Networks MT-8200-63A IntelliTone™ Pro 200 Probe

General specifications	
Operating temperature	32 °F to 104 °F (0 °C to 40 °C)
Storage temperature	-4 °F to +140°F (-20 °C to °C)

Operating relative humidity (% RH without condensation)	95 % (50 °F to 95 °F; 10 °C to 35 °C) 75 % (95 °F to 104 °F; 35 °C to 40 °C) Uncooled < 50 °F (< 10 °C)
Vibration	Random, 2 g, 5 Hz-500 Hz
Shock	1 m drop test
Safety	EN 61010-1, Category: None
Altitude	3000 m
EMC	EN 61326-1, FCC Part 15 B
Baery type and life	9 V alkaline (NEDA 1604A or IEC 6LR61); 20 hours typical
Applications	Copper cabling media including; 75 or 50 Ohm Coaxial cable; Two Conductor cool, security, generic cabling. 10 Base-T or 10/100 Base-T datacom networks. UTP cable. Shielded Twisted Pair supported in Cable Map function of the IntelliTone 200.

Probe specifications

Dimensions	8.73 x 1.88 x 1.26 in (22.2 x 4.8 x 3.2 cm)
Display	(8) LED indicators, Sync LED indicator
Audio	IntelliTone: Microprocessor cooled audio files Analog: Detected toner signal
Cool	Thumbwheel switch, volume cool wheel
Tone detection	Detects IntelliTone™ digital signal for Locate, Isolate, and Cable Map Detects analog SmartTone signal (500-1200Hz) and other analog toners.
Toner interface	Main Mod8 port for Cable Map on all 4 pairs of UTP / STP cabling.
Auto power down	Tus off automatically after 1 hour of inactivity

Ordering information



MT-8200-63A

Fluke Networks MT-8200-63A IntelliTone™ Pro 200 Probe

Includes:

- IntelliTone™ Pro 200 Probe
 - RJ11 and RJ45 patch cables
 - Lanyard
 - Quick start guide
 - 9-volt battery
-

Fluke. *Keeping your world up and running.®*

Fluke Corporation
PO Box 9090, Everett, WA 98206 U.S.A.

Fluke Australia
Unit 26, 7 Anella Ave
Castle Hill, NSW 2154 Australia
Phone: 61 2 8850-3333
www.fluke.com.au

©2025 Fluke Corporation. All rights reserved.
Specifications subject to change without notice.
02/2025

**Modification of this document is not permitted
without written permission from Fluke Corporation.**