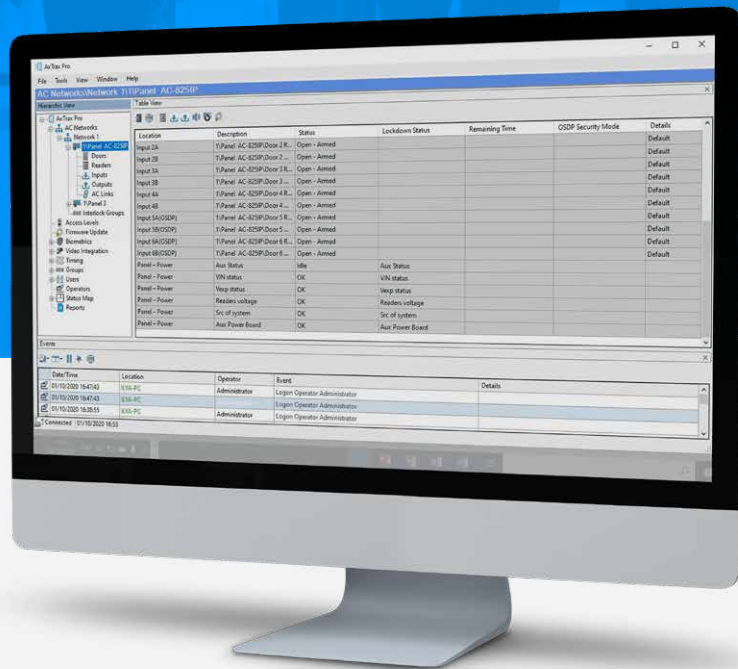


ROSSLARE



 **AxTraxPro™**

AxTraxPro™

The All-purpose Access Control Management Software

Rosslare introduces the new AxTraxPro™ client-server management software that enables setting automated physical access control policy across facilities, perfect for today's most demanding users and organizations. The system can manage thousands of Rosslare networked access controllers and users, providing enhanced security with excellent system scalability and performance.

AxTraxPro™ offers a friendly web-based interface that allows system operators to locally or remotely manage their on-premise AxTraxPro™ servers.

Integrated with video management systems and combining Rosslare state-of-the-art access control components – including controllers, readers, credentials and other peripherals – the complete ecosystem is optimal for almost any need.

Flexible and feature-rich management software

AxTraxPro™ enables organizations to meet their dynamic needs with agility and performance like never before.

Leveraging a set of features designed to maximize utility and security, AxTraxPro™ includes new tools to save time and resources when building the physical access control environment.

Web client

For on-going management of the on-premise AxTraxPro™ server. Operators can access the system from their web browsers for daily tasks.

Enhanced security

Communication is secured from the credential all the way to server using advanced encryption algorithms. Session-based security for bullet proof access avoiding man in the middle or replay attacks.

Lockdown

For lockdown groups & immunity configuration and management, provides emergency response and enhanced control mechanism for stopping access rights in any group of access points, allowing securing, clearing, and controlling the facility quickly and effectively in the affected areas.

Video integration

Ask us about integration with Rosslare VMS and major NVR vendors, including Hikvision and Dahua, for event-based video pop-up and snapshot reports.

Integrated biometrics

Integrated with Rosslare fingerprint and face Biometric devices to enable improved facility security. Simple to use and encrypted automatic template distribution makes it ideal for large scale network deployments.

Access control policies

Enhanced access control policies such as access groups, access level, interlock groups, Antipassback and more.

Identity management

Manage user information, photo, and related access policies and credentials.

Up to 16 credentials per user

Supports Face-ID, Fingerprint, PIN-Codes, RFID cards, UHF Tags, NFC-ID, BLE-ID and LPR for vehicles.



Alarm management and reporting

Alarm management workflow across devices and smart links automations ensures that your security center is responsive. Email notifications make sure the right people are informed. For a secure audit trail, the reports module allows creation of instant, custom and insightful reports for operations administration.

Ironclad software security

A new client-server security mechanism including AES 256-bit encryption communication for a privacy compliant system.

Time and attendance

Built-in capability of generating attendance reports with pre-set formats, automatic and customized reports that can be exported and used by accounting systems.

Car parking management

Integrated with 3rd party and Rosslare products for automated gate opening and touchless experience. Including UHF readers, license plate cameras, and mobile credentials, along with fundamental features related to parking occupancy management and control.

Benefits that resonate across the organization

- + Globally proven software with tens of thousands of active installations
- + Flexible features make it easy to manage, install and use for enhanced productivity
- + Scalable to enable implementation of projects from a single door to thousands of access points
- + Easily integrates with any third-party software and tools using dedicated server SDK
- + Wide range of Rosslare Networked Controllers and Expansions to win projects with custom fit feature-set and price point



Extensive hardware support

AxTraxPro™ management software supports the entire Rosslare product line. Below are some selected items with seamless AxTraxPro™ integration.



AC-8251P



R-805



S-805



D-805



P-805

Networked Controllers & Expansions



AY-U920BT



AY-U915BT



AY-B8550



AY-B9250BT



AY-H6355BT



AY-K35



AY-B8650



AY-B9350

Readers

Biometric Terminals



EX-H22N



SA-90



PS-C25TB

Accessories



Credentials

Featuring enhanced security

AxTraxPro™ enables Rosslare intelligent controllers, expansions, and readers to operate under Open Supervised Device Protocol (OSDP V2 secure channel), which became a common requirement in high value projects. The OSDP standard, together with Secure Channel Protocol (SCP), provides highly secure bi-directional communications and advanced security features for connecting between OSDP devices.

Rosslare OSDP implementation is compliant with the SIA standard to enable all third-party readers and controllers to operate seamlessly.

Communication between the controller and the AxTraxPro™ server is encrypted by a 256-bit key.



Web client

Leveraging web technologies to allow operators, managers and administrators to control and manage their AxTraxPro™ software locally or remotely, including friendly web interface designed for ease of use and enhanced productivity.

MAIN FEATURES

Doors management

Remote door release – by time, toggle or manually – to view doors list with quick search and favorites.

Live view door opening, closing status, alarms, users view per door and more.

Users management

Managing access ID holders, operators and visitors, with a Table view, Quick Search, Favorites, User Form, Set Valid Dates, Set Counter, Credentials management, Access Groups, Access Level, Handicap/Accessibility Level, Tracking User Access Events, and more.

Lockdown

Managing lockdowns, including groups, modes, and users' immunity settings to a lockdown group.

The screenshot displays the AxTraxPro web client interface. The top navigation bar includes 'Doors', 'Users', 'Lockdown', 'Events', 'Networks', and 'Reports'. The main content area is titled 'Users' and shows a grid of user profiles. A modal window for 'Corey Bergson' is open, displaying his profile details, access group (Employees), access level (L8), and a list of recent access events. The events table is as follows:

Type	Name	Event name	Source	Time
Regular door	Lab internal door	Entrance	Finger print	Today, 04:26pm
Barrier	Parking 01	Entrance	Finger print	Today, 04:26pm
Turnstile	Parking 01	Entrance	Finger print	Today, 04:26pm
Regular door	Lab internal door	Entrance	REX button	Today, 04:26pm
Regular door	Lab internal door	Entrance	Card reader	Today, 04:26pm

Events, alerts and reports

View events as they occur and use historical information to generate a variety of reports from ready-made and customized templates.

Network management

Simple to use management interface for system operators showing the details of all the hardware and peripherals in the system, including connectivity and operating statuses.



Lockdown groups & immunity

The lockdown functionality of AxTraxPro™ allows organizations to develop their physical security protocols across multiple sites and access points. The lockdown group interface enables lockdown areas to be set ad hoc.

Each lockdown group is operated with the following options:

- Defined areas (groups of access points) that can be locked down manually or when triggered by a predefined security event
- Easy to set-up immunity assignment for users to override and have access during lockdowns
- Integration of lockdown with smart links automation to define the rules in which the system should behave when events occur in the access control panel
- Easy to define credentials such as PIN code or card, and system hardware inputs that enable lockdown or release lockdown modes
- Features a lockdown timer with remaining time display for full online and offline safety management

Open for integrations with AxTraxPro™ SDK

AxTraxPro™ comprehensive Software Development Kit tool makes it easy to integrate and deploy various third-party applications, such as security, safety, and time & attendance. The SDK allows for full access system functionality, controlling and monitoring every aspect of site access requirement.

Access group

Access group is the traditional logic mechanism that allows groups of users to inherit the same set of privileges. An access group includes a combination of readers and time zones that define multi-door scenarios.

- Each access group can contain multiple rules
- User friendly tree view interface simplifies associating users to access groups
- Rules work online and offline

Access level

Increases the system flexibility and allows for policy setting based on assigning levels to readers and users. Access level works in parallel to access groups and allows certain users access permission and restriction management based on their level of authorization.

Simplifies the operation on public areas, such as lobbies and elevator rooms, by using access level logic and removing the need to control the areas via access groups.



Wide credentials coverage with distinction

The AxTraxPro™ caters to various users in the organization, from standard users with a single credential to ones with mobile devices, vehicle, multiple cards, biometrics and more.

AxTraxPro™ recognizes the credential type used, and can enroll multiple credentials per single user, enabling to employ advanced dual-factor authentication for high security areas.

AxTraxPro™ is compatible with the full range of credentials technologies, enabling multiple enrollment stations to be deployed in distributed organizations.

Credentials technologies supported by AxTraxPro™



PIN Code



NFC



BLE



RFID card



UHF tags for vehicles and assets



Car license plate



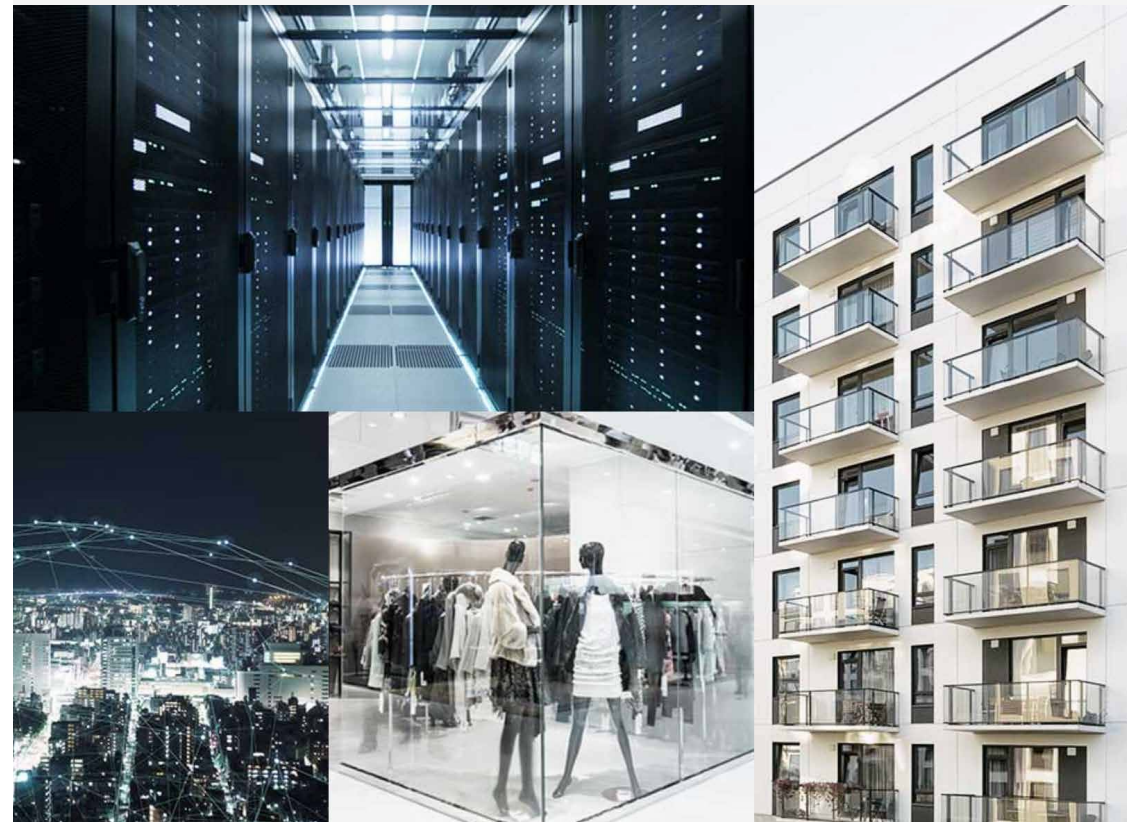
Fingerprint biometrics



Face biometrics

Fit for any industry and application

AxTraxPro™ software management system is flexible and versatile with a long history accommodating the needs of diverse industries and applications, serving large and small organizations in Educational, Healthcare, Residential, Enterprise & Corporate, Data Centers, Smart City, Retail, and Banking & Finance.



AxTraxPro™ Architecture Diagram

- WAN
- Wiegand
- OSDP V2 Secure Channel
- TCP/IP
- RS-485 Sub Network

