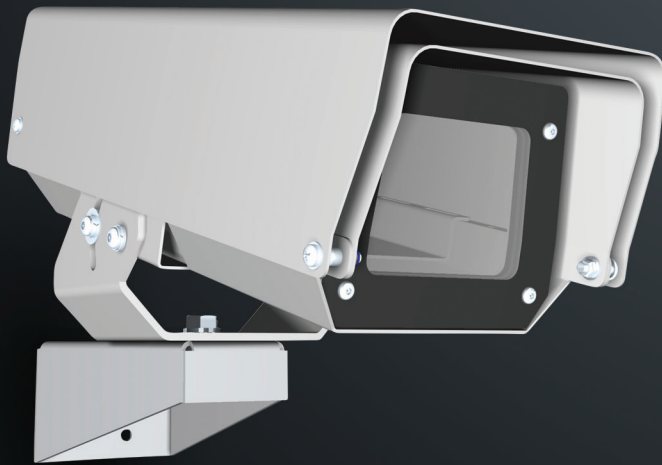


M02AL OUTDOOR CAMERA HOUSING



The M02 range of housings are designed to accommodate a wide range of analogue and IP addressable CCD camera and lens combinations. The body features 285mm long camera space and sufficient width to accommodate wider camera designs, including Axis M11, P13, Q16 & Q17.

The IP66 rated M02AL housing features light weight construction and a swing open lid for ease of camera installation and adjustment. The pan tilt being side mounted provides greater stability for the camera mount platform. A motorised pan tilt mechanism may be attached to 4 x M6 sockets on a 101.6mm PCD base mount.

As standard, the clever M02AL housing accommodates upright parapet and standard wall installations. Choose from the standard or extended wall bracket and pole mount hardware to suit other applications.

APPLICATIONS

Due to the extensive range of mounting hardware, the M02 series can be mounted in the most demanding sites.

With the ability to tilt down in excess of 55 Degrees for viewing closer to mounting position, the housing is ideal for walkways and looking up and down staircase and pole mount applications.

FEATURES

- Swing open lid for easy access when on a ladder.
- Off-centre locking fasteners on the pan and tilt to securely lock the camera aim. This greatly reduces the opportunity for misalignment of the camera by vandals.
- Tamper switch mounted at front and rear of housing for easy access and reduced set up time on installation without the need for tools.
- Camera can be set up through the lens reducing time installing and removing on set up.
- Range of extended wall mount brackets, parapet mounts, pole mount and wall mount adapters and electrical accessories.

SPECIFICATIONS

Construction	1.2mm, 4mm aluminium & 2.5mm stainless steel.
Finish	Dulux powder coat in Off-White Satin finish.
Lens	6mm acrylic. Optional Quartz glass optical lens for high resolution and long zoom camera and lens combinations.
Cable Entry	2 x 20mm cable entry at rear.
Access	1 x M6 post cap security screw.
Electrical	Optional heater thermostat - 24 VAC 50Hz 11 Watts. Optional fan - 24 VAC 50Hz 3.2 Watts.
Max Camera Size	282mm (L) x 126mm (W) x 89mm (H).
Weight	2.4kg.

ALSO AVAILABLE

M02SS stainless steel variation for corrosive environments.



PARTS LIST

HOUSINGS

M02AL Aluminium outdoor housing with swing open lid access. Comes complete with pan tilt and wall mount bracket which accommodate standard and upright parapet mounting. Camera space 282mm (L) x 89mm (H) x 126mm (W). Aluminium and stainless steel construction. 101.6mm PCD base mount provided for motorised PTZ mounting.

SHIELDS, BRACKETS & MOUNTS

M02ALSHIELD Aluminium sunshield to suit M02AL in Off-White Satin.

M02WP Stainless steel HD wall plate to suit M02SWB in Off-White Satin.

WB360 360mm reach stainless steel wall mount bracket in Off-White Satin.

M02PTAL Aluminium pan tilt bracket to suit M02AL in Off-White Satin. (Included in M02AL)

M02SWB Stainless steel wall bracket in Off-White Satin. (Included in M02AL)

CWB1000SS 1000mm projection stainless steel cantilever wall bracket in Off-White Satin.

POLEMTSS Stainless steel pole adaptor to suit M02 & M03 housing brackets in Off-White Satin.

PARAPETMT Aluminium parapet mount in Off-White Satin.

ELECTRICAL

MHTR Lens heater demister with fixed point thermostat (15deg c) 24 VAC to suit M02, M03 & M12 housings.

MHTRFAN Fan heater with fixed point thermostat (15deg c) 24 VAC to suit M02, M03 & M12 housings.

M02TSW Tamper switch to suit M02, M03 & M12 housings.

M02VIBSW Tilt vibration sensing switch to suit M02, M03 & M12 housings.

DIMENSIONS

