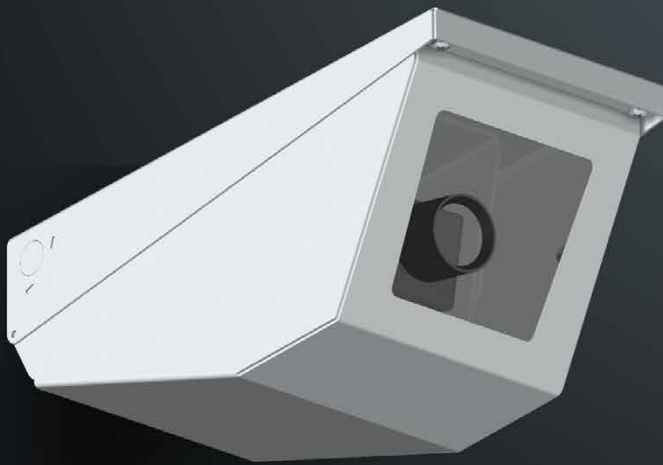


M04HD WEDGE CAMERA HOUSING



The M04 range of housings are designed to accommodate a wide range of analogue and IP addressable CCD camera and lens combinations. The M04HD is an outdoor wedge housing with clear internal space to accommodate camera bodies up to 260mm in length. The M04HDSS model is also available in stainless steel construction for corrosive environments.

The IP65 rated M04HD housing features a swing-down lid offering easy access for drilling mounting holes and performing ongoing maintenance.

This hard wearing housing offers an IP65 rating for the price of a IP54 housing from competing brands.

APPLICATIONS

The M04HD series is ideal for use in car parks, public transport areas, railway platforms, under eaves, tunnels and walkways.

This heavy duty ceiling mounted wedge housing is suitable for indoor and outdoor environments.

FEATURES

- Housing body swings down from ceiling for ease of access and installation.
- Rugged design for high traffic outdoor areas under eaves where housing may be susceptible to vandals.
- Durable 6mm lens with optional alternatives for optimum clarity and minimal distortion.
- Economic housing suitable for transport or commercial projects -accommodates most analogue and IP addressable CCD camera and lens combinations.

SPECIFICATIONS

Construction	1mm & 2mm zincanneal.
Finish	Dulux powder coat in Off-White Satin finish.
Lens	6mm clear polycarbonate lens. Optional Quartz glass optical lens for high resolution and long zoom camera and lens combinations.
Cable Entry	5 X 20mm diameter in side , top and rear.
Access	2 x M6 post button security screws. Lid swings open for clear access.
Electrical	Optional heater thermostat - 24 VAC 50Hz 11 Watts. Optional fan - 24 VAC 50Hz 3.2 Watts.
Max Camera Size	Camera and lens up to 260mm long.
Weight	4.2kg.

ALSO AVAILABLE

M04HDSS variation in stainless steel for corrosive environments.



DIMENSIONS

