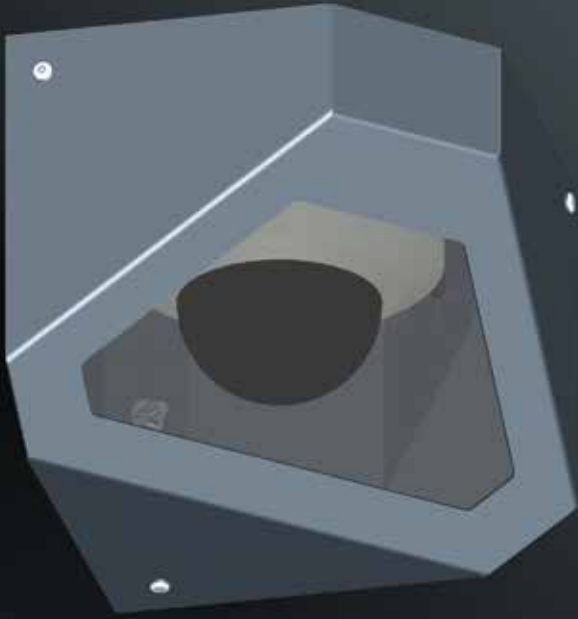


M10CS1 CELL HOUSING



The M10CS1 housing has been designed to accommodate dome cameras up to 170mm diameter and 140mm deep as well as standard body cameras by inverting the mounting bracket. The corner mount design is purpose built for correctional centre applications. The flat facedesign features no centre projections which limits self-harm opportunities.

The robust construction incorporates 4mm thick steel supports for the camera lens mounting flange at the front of the housing. This increased strength reduces the likelihood of damage that can occur on competing designs.

The M10 range features compact housings that accommodate less space than competing triangular housings that enclose similar sized cameras.

APPLICATIONS

The M10 series is purpose built for high security environments including jails and mental health institutions, for both indoor and outdoor applications.

The M10CS1 is a durable corner mount housing that fits against the ceiling for optimum security and minimal self-harm opportunities.

FEATURES

- Increased strength from steel supports around camera lens mount at front of housing for reduced likelihood of damage.
- Accommodates dome housings and standard cameras when the mounting bracket is inverted.

SPECIFICATIONS

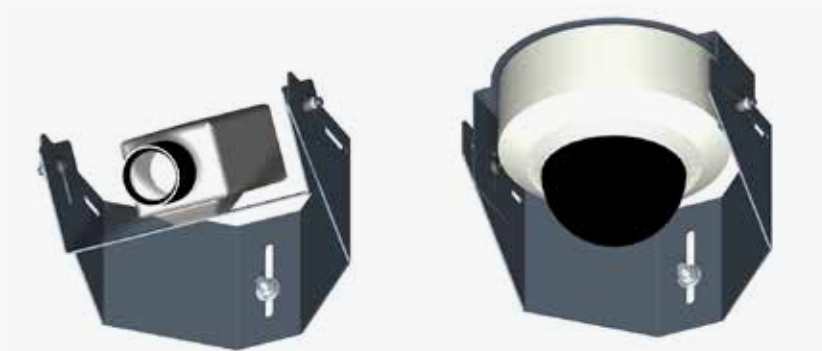
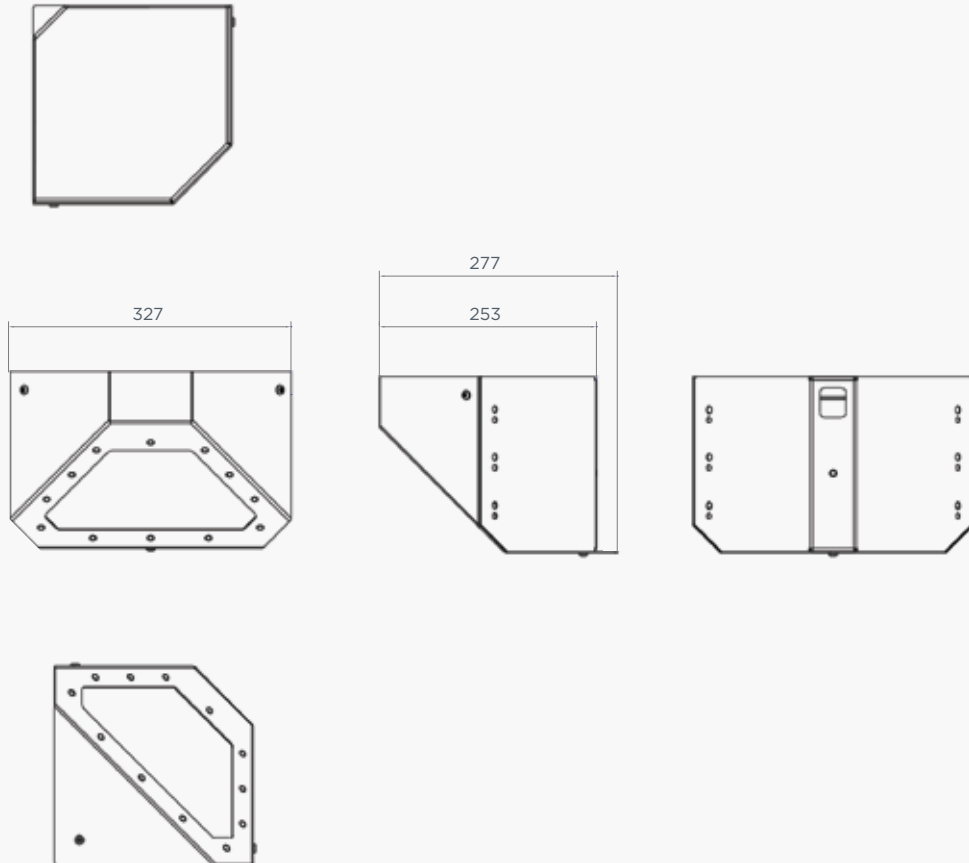
Construction	2mm zinc anneal & 4mm steel.
Finish	Dulux powder coat in Dark Grey finish.
Lens	6mm polycarbonate. Optional Quartz glass optical lens for high resolution and long zoom camera and lens combinations.
Cable Entry	2 x 20mm cable entry at rear.
Access	3 x M6 post cap security screw.
Electrical	Optional heater thermostat - 24 VAC 50Hz 11 Watts. Optional fan - 24 VAC 50Hz 3.2 Watts.
Max Camera Size	150mm - 170mm diameter domes x 140mm (D).
Weight	TBA

ALSO AVAILABLE

M10CS2 model accommodates up to 180mm camera length.



DIMENSIONS



M10CS1 accommodates dome cameras and standard body cameras when the mounting bracket is inverted.