

1082-N

Surface mount contact with wire leads

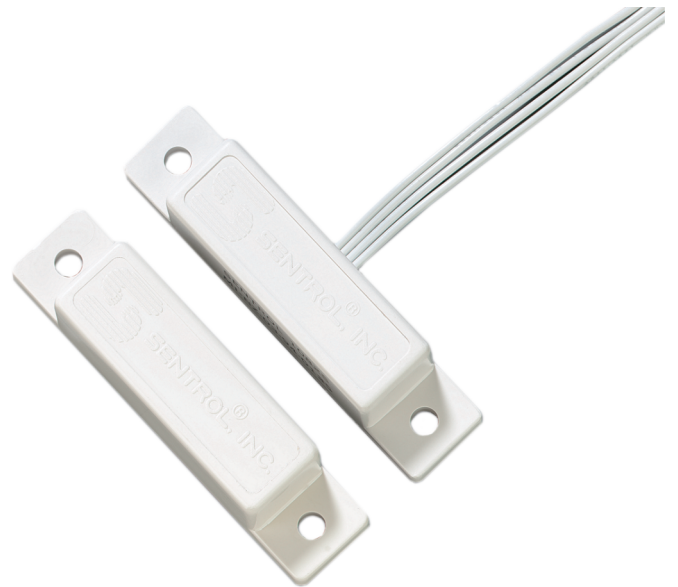
High Quality components and materials

Reed legs are plated with rhodium or ruthenium, and hermetically sealed in dry nitrogen. This offers superior protection against sticking and provides a moisture free environment therefore preventing corrosion.

All reed switches are encapsulated in an exclusive polyurethane potting compound which provides the critical balance between flexibility and maximum holding power. In the event that supporting material expands or contracts due to increased humidity or when drying out, the compound allows the contact housing to flex and bend and therefore prevents the reed from cracking. Moreover, it remains resistant to increases in temperatures, whereas some compounds can soften, causing reed migration which results in false alarms because the reed is pulled away from the magnet.

High Security

For high security installations, we provide a selection of contacts. Here, a small (bias magnet) is attached to the reed switch which influences the reed to change state. The contact is now balanced, but only so long as the actuator magnet remains positioned in a specific zone. If the actuator magnet is moved closer or farther away from the reed or if an attempt is made to defeat the contact with an external magnet, the reed will change state and go into alarm.



Details

- Comprehensive product range
- Superior quality
- Easy installation

1082-N

Surface mount contact with wire leads

Technical specifications

Gap distance (max)

25 mm

Connections

30 cm wire leads

Contact

NC

Supervised loop

No

Dimensions (L x W x H)

65 x 14 x 13 mm

Color

White



As a company of innovation, Carrier Fire & Security reserves the right to change product specifications without notice. For the latest product specifications, visit firesecurityproducts.com online or contact your sales representative.

Last updated on 23 July 2021 - 10:31