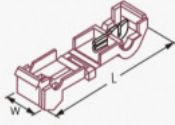


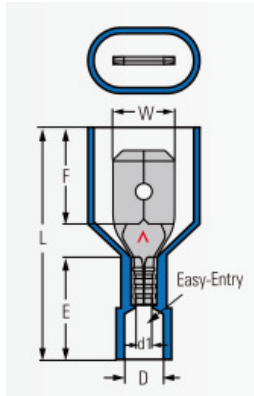
QUICK SPLICE CONNECTORS



- Materials:**
- Conductor: Brass strip H62/C28000
 - Insulation: Nylon
- Finished:**
- Tin-Plated
- Standard:**
- ROHS3
- Characteristics:**
- Heat resistant: -40~105°C
 - Easy-Entry insulation for easy cable insertion
 - Use insulation displacement technology to make in-line splices without previous stripping, pass through connections as well as pigtail and tap splices.
 - The insulation with locking ensured the reliability of connection
 - According to UL310, IEC60998-2 requirements

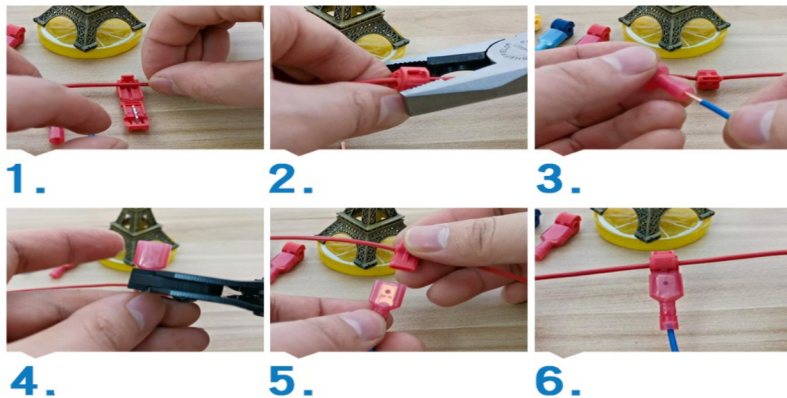
Type	Application for cable size		Dimension		Fig.	Color	
	mm ²	A.W.G	W	L			
SC1QSC-6.3	0.5-1.0	22-18	10.0	38.0			■ Red
SC2QSC-6.3	1.0-2.5	18-14	10.0	38.0			■ Blue
SC5QSC-6.3	4-6	12-10	10.0	38.0			■ Yellow

NYLON-FULLY INSULATED MALE DISCONNECTORS



- Materials:**
- Conductor: Brass strip T2/C11000
 - Insulation: Nylon
- Finished:**
- Tin-Plated
- Standard:**
- ROHS3
- Characteristics:**
- Heat resistant: -40~105°C
 - Flared insulation for easy cable insertion
 - Flared-barrel entry for easy wire insertion
 - Fully insulated structure design make more use of security products
 - According to UL310 requirements

Type	Mating Tab (mm)	Application for cable size		Stripped length (mm)	Dimension							Color
		mm ²	A.W.G		W	F	L	E	d1	D	T	
M1QC-FI6.3	(0.8x6.35)	0.5-1.5	22-16	7.5-8.0	6.35	10.0	24.0	10.8	1.7	4.0	0.4	Red
M2QC-FI6.3	(0.8x6.35)	1.5-2.5	16-14	7.5-8.0	6.35	10.0	24.0	10.8	2.3	4.5	0.4	Blue
M5QC-FI6.3	(0.8x6.35)	4-6	12-10	8.5-9.0	6.35	10.0	26.0	12.8	3.4	6.3	0.4	Yellow



ORDERING	
1	ARLQSCMQC5 One Box Contains
	SC5QSC-6.3 x 300 pcs
	M5QC-FI6.3 x 300 pcs
2	ARLQSCMQC2 One Box Contains
	SC2QSC-6.3 x 300 pcs
	M2QC-FI6.3 x 300 pcs
3	ARLQSCMQC1 One Box Contains
	SC1QSC-6.3 x 300 pcs
	M1QC-FI6.3 x 300 pcs