

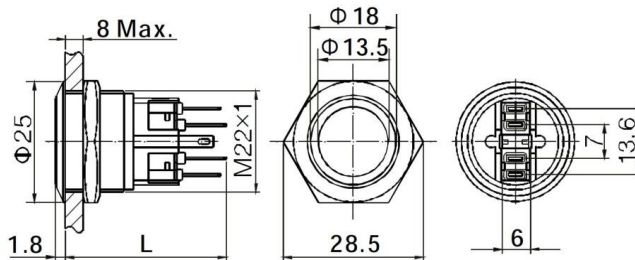
# meiker™

## GQ221R SERIES

### Illuminated Stainless Steel Pushbutton Switch



- Illuminated stainless steel switch
- Vandal resistant
- LED ring illumination
- Waterproof IP65 rated
- Momentary or latching switch
- 1xN.O. + 1xN.C. contacts
- 22 mm panel mounting hole
- 2.8mm terminals



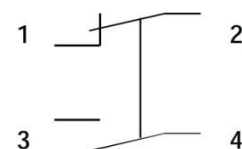
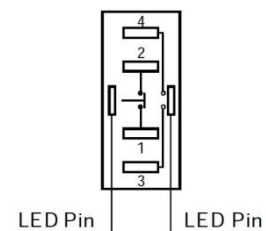
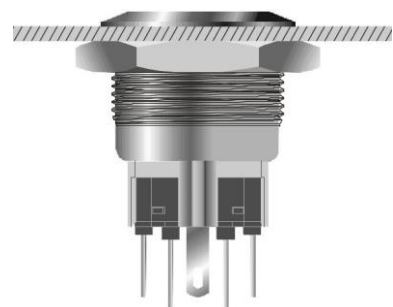
L: Momentary is 35.8;  
Latching is 40.8.

Top View

Terminal Arrangement

#### SPECIFICATION

Front Shape	Flat Round (Flush mount)	
Termination	Solder/Push-on 2.8mm Terminal Tabs	
Switching	1 x N/O + 1 x N/C	
Max. Current Rating	5A / 250VAC	
Contact Resistance	$\leq 50\text{m}\Omega$	
Insulation Resistance	$\geq 1000\text{M}\Omega$	
Dielectric Strength	2000VAC	
Operating Temp.	-20°C ~ +55°C	
Mechanical life	1,000,000 cycles	
Electrical life	50,000 cycles	
Contact material	Silver Alloy	
Panel Thickness	1~8mm	
Torque	5~14Nm	
Operation Pressure	5.5N	
IP Rating	IP65	
Impact Rating	IK10	
Material	Button	Stainless Steel
	Body	Stainless Steel
	Base	PA
RoHS Status	RoHS Compliant	
Illumination	Type	Ring Illuminated (LED)
	Voltage	12V / 24V / 110V / 220V
	Colour	Red / Green / Yellow / Blue / White
	Life	40,000 hours



Customised options available: laser etching symbols and text, termination leads and looms, special LED voltage, dual-colour, etc

1

sales hotline: 1300 362 191

phone: +61 3 9465 0011

fax: +61 3 9465 5088

email: sales@arlin.com.au

web: www.arlin.com.au

# GQ2211R SERIES cont.

## HOW TO ORDER

### GQ 1 2 3 - 4 - 5 - 6

**GQ:** anti-vandal switch series

**1** = mounting size diameter, replace with

- 16
- 19
- 22
- 25

**2** = contacts, replace with

- 11                      1 N/O + 1 N/C
- 22                      2 N/O + 2 N/C22

**3** = illumination style, replace with

- (blank)                non-illuminated
- R                        ring-illuminated LED

**4** = switch action, replace with

- (blank)                momentary
- ALT                     latching / alternate

**5** = illumination colour, replace with

- BU                      blue LED
- GN                      green LED
- RD                      red LED
- WT                      white LED
- YL                      yellow LED

**6** = illumination voltage, replace with

- 6V                        AC/DC6V
- 12V                      AC/DC12V
- 24V                      AC/DC24V
- 110V                    AC/DC110V
- 240V                    AC/DC240V

PART NUMBER	ACTION	LED COLOUR	LED VOLTAGE
GQ2211R-BU-12V	Momentary	Blue	AC/DC12V
GQ2211R-BU-24V			AC/DC24V
GQ2211R-BU-240V			AC/DC240V
GQ2211R-GN-12V		Green	AC/DC12V
GQ2211R-GN-24V			AC/DC24V
GQ2211R-GN-240V			AC/DC240V
GQ2211R-RD-12V		Red	AC/DC12V
GQ2211R-RD-24V			AC/DC24V
GQ2211R-RD-240V			AC/DC240V
GQ2211R-WT-12V		White	AC/DC12V
GQ2211R-WT-24V			AC/DC24V
GQ2211R-WT-240V			AC/DC240V
GQ2211R-YL-12V		Yellow	AC/DC12V
GQ2211R-YL-24V			AC/DC24V
GQ2211R-YL-240V			AC/DC240V
GQ2211R-ALT-BU-12V	Latching	Blue	AC/DC12V
GQ2211R-ALT-BU-24V			AC/DC24V
GQ2211R-ALT-BU-240V			AC/DC240V
GQ2211R-ALT-GN-12V		Green	AC/DC12V
GQ2211R-ALT-GN-24V			AC/DC24V
GQ2211R-ALT-GN-240V			AC/DC240V
GQ2211R-ALT-RD-12V		Red	AC/DC12V
GQ2211R-ALT-RD-24V			AC/DC24V
GQ2211R-ALT-RD-240V			AC/DC240V
GQ2211R-ALT-WT-12V		White	AC/DC12V
GQ2211R-ALT-WT-24V			AC/DC24V
GQ2211R-ALT-WT-240V			AC/DC240V
GQ2211R-ALT-YL-12V		Yellow	AC/DC12V
GQ2211R-ALT-YL-24V			AC/DC24V
GQ2211R-ALT-YL-240V			AC/DC240V

**Notes:**

1. Illumination LED contains internal resistor circuit, no external resistors required when using at rated voltage.
2. Illumination LED can be operated with AC or DC voltage, and either LED terminal can be anode or cathode.
3. LED terminals are independent of switch circuit, and can use the switch or peripheral circuit to control the LED status.