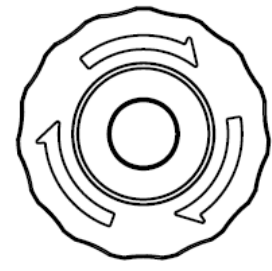
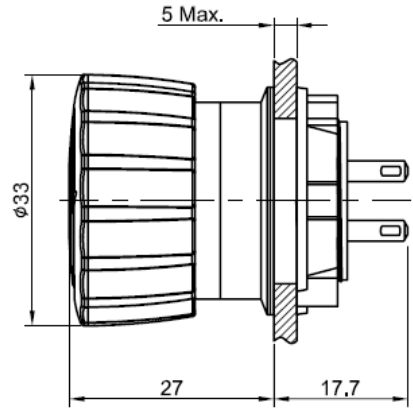
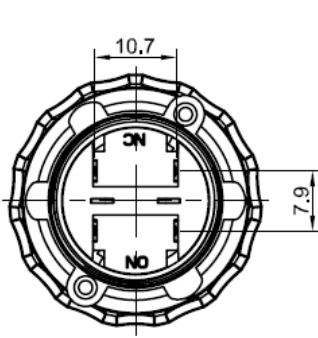
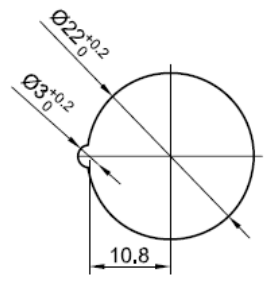


# ARLSWP-49

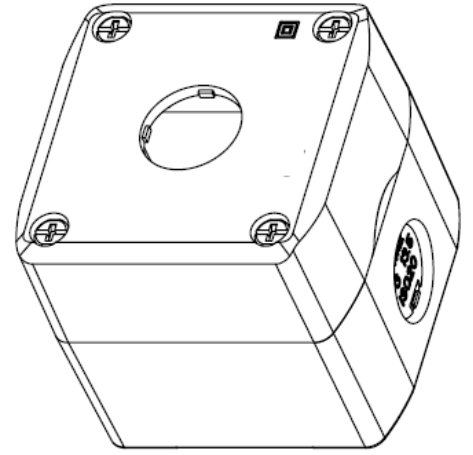
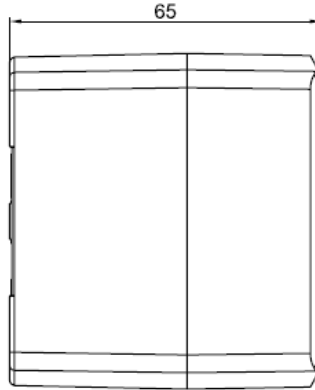
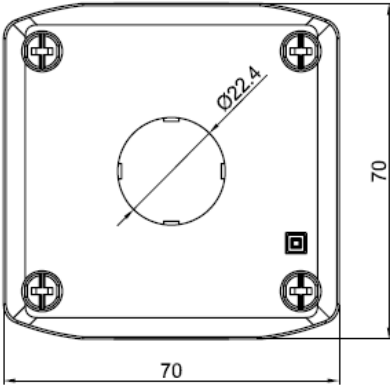
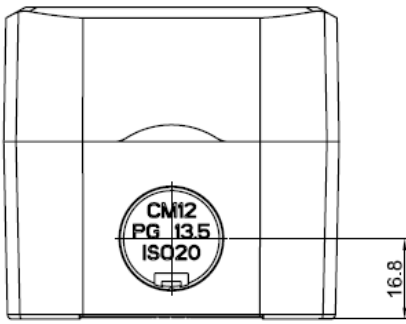


Type	NC	NO
Diagram		

Contact Composition



PANEL CUTOUT  
MAX. PANEL THICKNESS  
5 mm



**MATERIALS:**

1.Body: ABS.

**SPECIFICATIONS:**

- 1.Switch Rating: AC220V/1.5A, DC220V/1.5A.
- 2.Mechanical Life:  $\geq 200,000$ cycles.
- 3.Electrical Life:  $\geq 50,000$ cycles.
- 4.Contact Resistance:  $\leq 50$ m $\Omega$ .
- 5.Insulation Resistance:  $\geq 1,000$ M $\Omega$ .
- 6.Dielectric Strength: 1500V, RMS 50Hz, 5seconds.
- 7.Operating Temperature:  $-25^{\circ}\text{C} \sim +55^{\circ}\text{C}$  (No Freezing).
- 8.Contact Configuration: 1NO1NC.
- 9.IP Class: IP65.
- 10.Terminal Type: Pin Terminal(2.8 x 0.5mm).

**MATERIALS:**

- 1.Contact: Silver alloy.
- 2.Button:PBT.
- 3.Body:PA.
- 4.Base: PA.