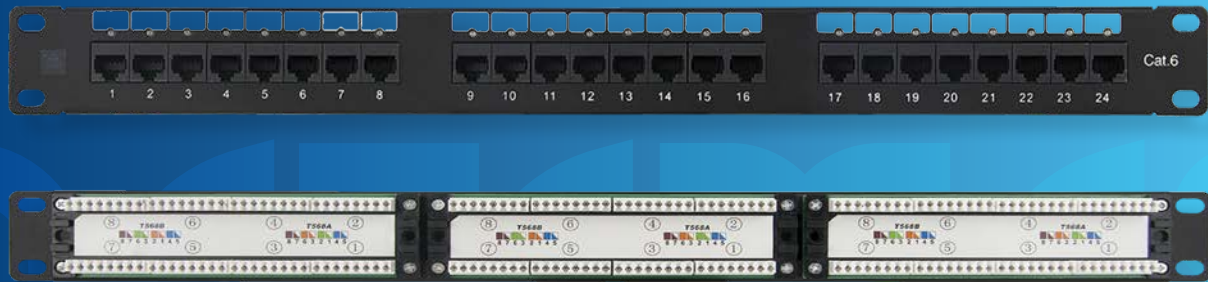


## Cat6 24-Port Patch Panel

P4026



### FEATURES

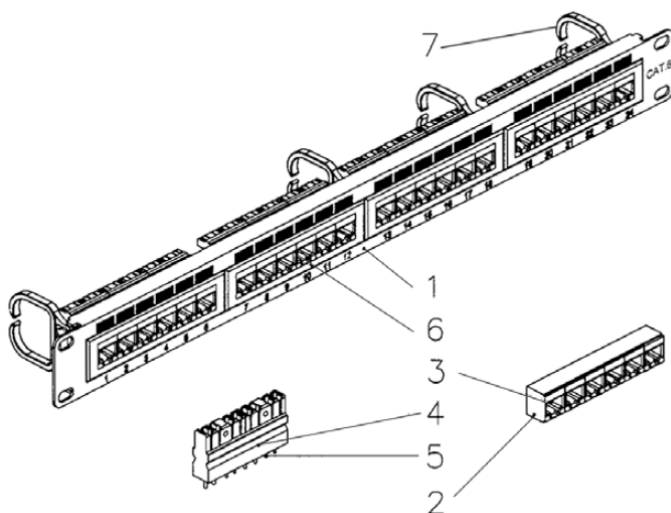
Datamaster Cat6 1RU Patch Panel with integrated rear Cable Management loops.

- 24-port Cat6 RJ45 ports 1RU
- The transmission characteristics of Datamaster' patch panels meet the requirements of Cat6 specifications.
- Using PCB technology to balance signal transmission and provide low insertion loss, return loss and crosstalk.
- The IDC terminal block can be used with both Krone and 110 impact tools and has combined T568A & T568B colour coding for easy installation.
- Design incorporates nylon loops for cable management.

Also Available in:

- 12-port, 24-port, 48-port capacity.

### MATERIAL SPECIFICATIONS



PART	DESCRIPTION
1	Panel SPCC 1.5mm thickness with black painted colour
2	Jack Housing ABS UL 94V - 0
3	Jack Contact
3-1	Phosphor Bronze 50-60µ" Nickel Plated
3-2	Contact Area: min 3mm 50µ" Gold Plated
4	IDC Housing PC +5% GF, UL 94V - 2
5	IDC Terminal
5-1	Phosphor Bronze 50 - 60µ" Tin Plated
5-2	110 & Krone Tool Compatible
5-3	Suitable for 22-26AWG stranded & solid Wire
6	Jack Bracket Set ABS, UL 94V - 0
7	Cable Holder PA6

To view Access' extensive ranges go to: [www.accesscomms.com.au](http://www.accesscomms.com.au)

Sydney (Head Office)  
Brisbane Sales  
Melbourne Office  
Adelaide Office

Unit 1, 29 Prince William Drive, Seven Hills NSW 2147  
28 The Gateway, Broadmeadows VIC 3047  
71 Anzac Highway, Ashford SA 5035

Phone: (02) 9414 8888  
Phone: (07) 3308 5555  
Phone: (03) 9330 8333  
Phone: (08) 8338 5540

sales@accesscomms.com.au  
brisbane@accesscomms.com.au  
melbourne@accesscomms.com.au  
adelaide@accesscomms.com.au

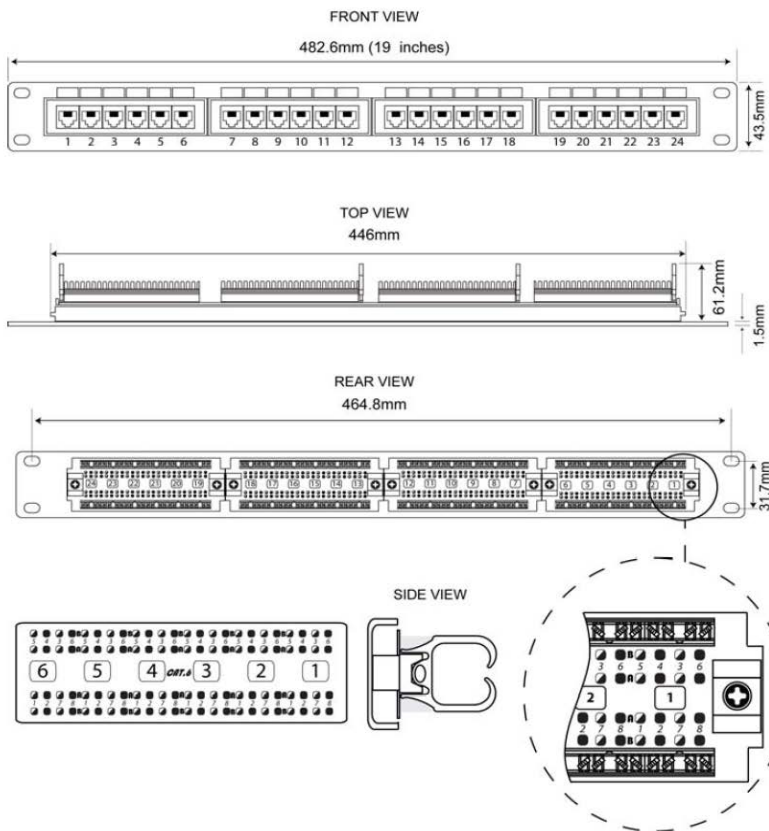
## Cat6 24-Port Patch Panel

P4026

### PERFORMANCE SPECIFICATIONS

Insertion Force	900g	
Retention Strength	7.7 kgs between jack and plug	
Operating Temperature	- 40°C to + 80°C	
Durability	Jack	750 Plug / Jack mating cycles
	IDC	200 Max punch times
Compliance	Cat-6 performance in compliance with ANSI / TIA / EIA 568 B.2-1 standard	

### MEASUREMENT SPECIFICATIONS



	T568A	T568B
<b>PIN 1</b>	Green / White	Orange / White
<b>PIN 2</b>	Green	Orange
<b>PIN 3</b>	Orange / White	Green / White
<b>PIN 4</b>	Blue	Blue
<b>PIN 5</b>	Blue / White	Blue / White
<b>PIN 6</b>	Orange	Green
<b>PIN 7</b>	Brown / White	Brown / White
<b>PIN 8</b>	Brown	Brown

To view Access' extensive ranges go to: [www.accesscomms.com.au](http://www.accesscomms.com.au)

Sydney (Head Office)  
Brisbane Sales  
Melbourne Office  
Adelaide Office

Unit 1, 29 Prince William Drive, Seven Hills NSW 2147  
28 The Gateway, Broadmeadows VIC 3047  
71 Anzac Highway, Ashford SA 5035

Phone: (02) 9414 8888  
Phone: (07) 3308 5555  
Phone: (03) 9330 8333  
Phone: (08) 8338 5540

sales@accesscomms.com.au  
brisbane@accesscomms.com.au  
melbourne@accesscomms.com.au  
adelaide@accesscomms.com.au