

KIT/201S-Z/372S-W/NSW2020



Features

- OEU-201S-HMK-Z
- Front metal casing.
- Supports batch configuration.
- Supports call and intercom with the connected indoor station and app.
- Supports video surveillance, security protection alarm, and tamper alarm.
- Built-in IC card reader.
- OEI-372S-H-W-Z
- ABS casing and glass panel, solid and durable.
- Supports Wi-Fi.
- Supports touchscreen operation.
- 1024 x 600 HD screen
- Supports remote door opening by sending signal to the door station.
- Allows to view live video of connected door stations and network cameras.
- NSW2020-6T-POE-IN
- Allows to switch operating modes, including Default, VLAN, and Extend.
- Supports VLAN isolation. All PoE ports are isolated from each other and only able to communicate with uplink ports.
- Supports network extension. With a high-quality network cable and IPC, the network transmission distance can reach up to 250 meters by lowering the network port rate to 10Mbps.
- Supports port priority. Packets from high-priority ports will be forwarded first.
- Supports flow control. When there is data congestion in the uplink ports, the switch will actively send flow control frames to PoE ports.
- Plug-and-play, simple and convenient.
- All metal casing, secure and reliable

KIT Components

- *OEU-201S-HMK-Z x 1
- *OEI-372S-H-W-Z x 1
- *NSW2020-6T-POE-IN x 1
- *EP-CS201-Z-NBx 1
- * EP-CSS201-Z-NB x 1
- *32GB TF card x 1

Specifications

● NSW2020-6T-POE-IN

Model	NSW2020-6T-POE-IN
Hardware Specification	
Ports	6 ports
Ports Type	6×100Mbps network ports (RJ45), including 4 PoE ports
Ports Rate	100Mbps
Standards	IEEE802.3, IEEE802.3u, IEEE802.3az, IEEE802.3x, IEEE802.3af, IEEE802.3at
Switching capacity	1.2Gbps
Packet Buffer	448K bit
Forwarding performance	0.90Mpps
MAC	1K
Prior Ports	1~2
Power Supply	DC: 48/51V, powered by adapter (AC100-240V, 50/60Hz)
PoE	support POE
Max. PoE Power	Max capacity: 60W, Max capacity for single port: 30W
Storage Temperature	-40 °C ~ 70 °C
Operating humidity	10%~90% (noncondensing)
Cooling Fans	0
Weight	0.19KG
Dimensions (W×D×H)	107*101*25mm
Storage humidity	5%~90% (noncondensing)
Operating temperature	0 °C ~ 40 °C (32 °F ~ 104 °F)
Indicator	POWER Steady on: AC input is normal, POWER Off: No AC input, No PoE Indicator, PoE-MAX off: The POE power supply power of the whole machine is less than 80% of the specification, PoE-MAX Steady on : The POE power supply power of the whole machine is greater than 85% of the specification, LINK/ACT Off: No link, LINK/ACT Steady on: Linked, LINK/ACT Flashing: Transmitting data

Working Mode	Default(Normal mode) : All ports can communicate with each other., EXTEND(Surveillance mode): Transmission distance up to 250 meters.
Max.Power	65W

● OEI-372S-H-W-Z

Model	OEI-372S-H-W-Z
Hardware Specification	
Power Supply	DC12V±25%,IEEE802.3af, Standard PoE
Power Consumption	<10W
Screen	7-inch ultra-thin TFT LCD screen
Screen Resolution	1024×600
Operation System	Linux
Audio Quality	Noise suppression,echo cancellation and AGC
Audio Input	1 built-in omnidirectional microphone
Audio Output	1 built-in speaker
Audio Compression Standard	MP3 G711
Audio Compression Bitrate	128Kbps
Interface	Power*1, network*1, RS485*1, IO output*2, IO input*8, TF card slot*1
Network	100Mbps network port, supports IEEE802.3af PoE power supply,WIFI
Weight	360g
Dimensions (L x W x H)	193mm×143mm×25mm
Operating Environment	-10°C to +55°C, 10% to 90%, non-condensing, indoor
Basic Business	
Protocol	UNV private protocol

● OEU-201S-HMK-Z

Model	OEU-201S-HMK-Z
Hardware Specification	
Power Supply	DC12V ±25%, PoE power supply
Operation System	Linux
Supplement Light	IR light (adaptive)
FOV	Horizontal: 124.3° Vertical: 67.5° Diagonal: 147.2°
Power Consumption	< 10W
Volume Adjustment	Support
Audio Quality	Noise reduction, echo cancellation, auto gain control
Audio Input	Built-in mic
Audio Output	Built-in speaker
Audio Compression Standard	PCM, G711, MP3
Audio Compression Bitrate	128Kps
Protection Level	IP65 (Apply waterproof glue to the gap between the device and the wall. See the quick guide for details), IK08

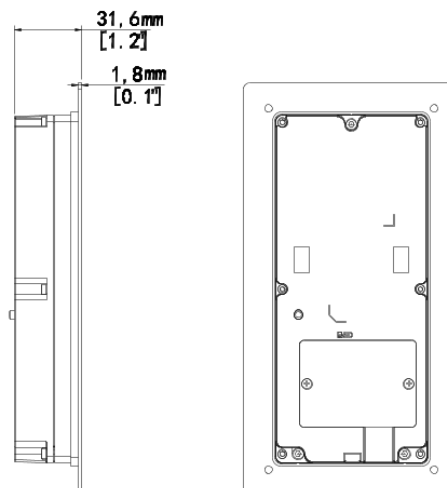
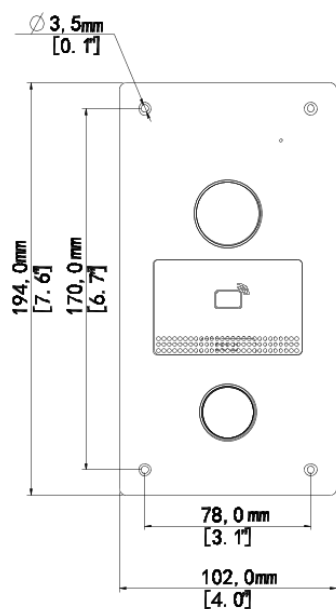
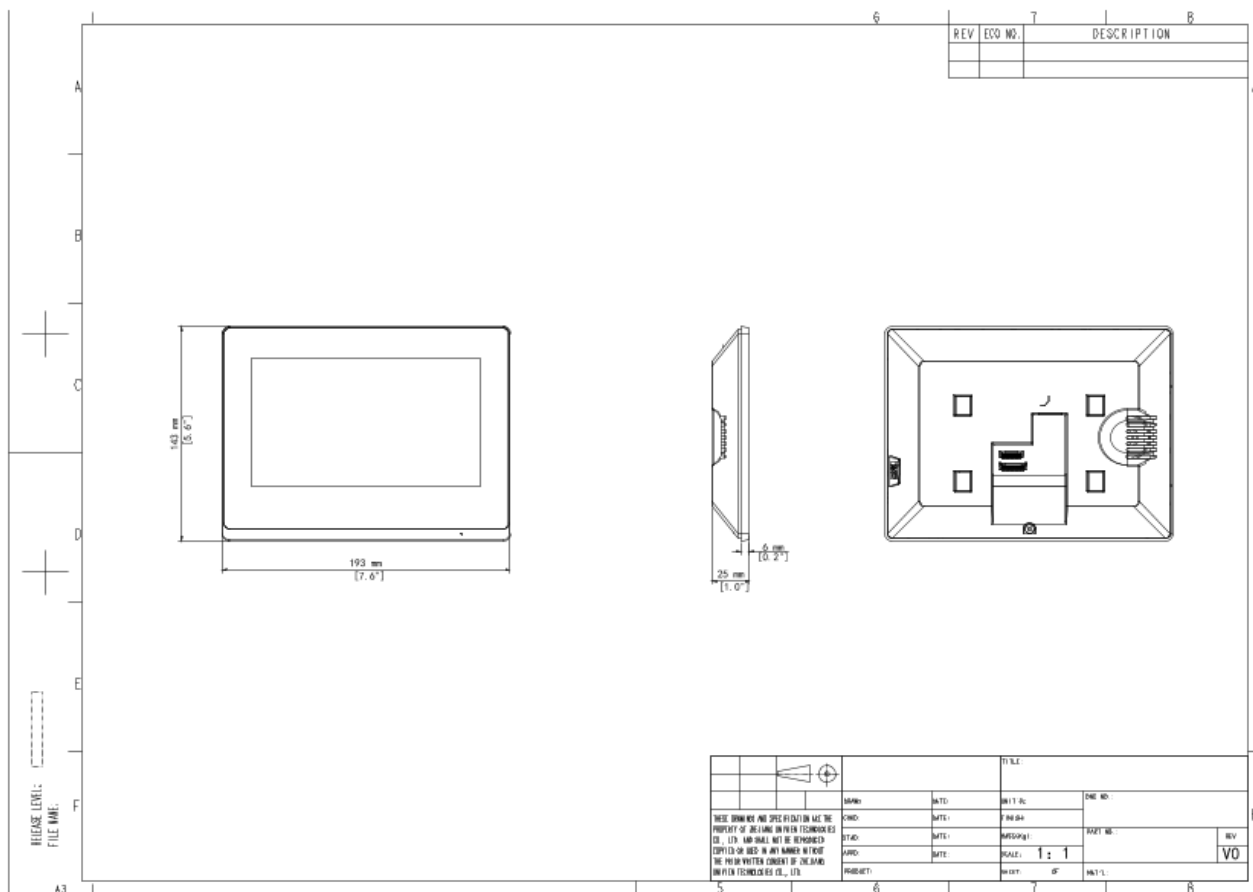
Weight	267g
Dimensions (L x W x H)	102mm x 31.6mm x 194mm
Mount Method	Wall mount, supports surface mount, junction box mount, recess mount
Interface	Power supply*1, network interface*1, RS485*1, door lock interface*2, IO input*4
Network	100Mbps network interface, supports IEEE802.3af PoE power supply
Operating Environment	- 40°C to 60°C, 10% to 90% noncondensing, outdoor
Specification Index	
Card Capacity	10000
Linked Indoor Station Capacity	20
Basic Business	
WDR	Supports DWDR
Protocol	Uniview private protocol
Button	Door call button*1, tamper button*1

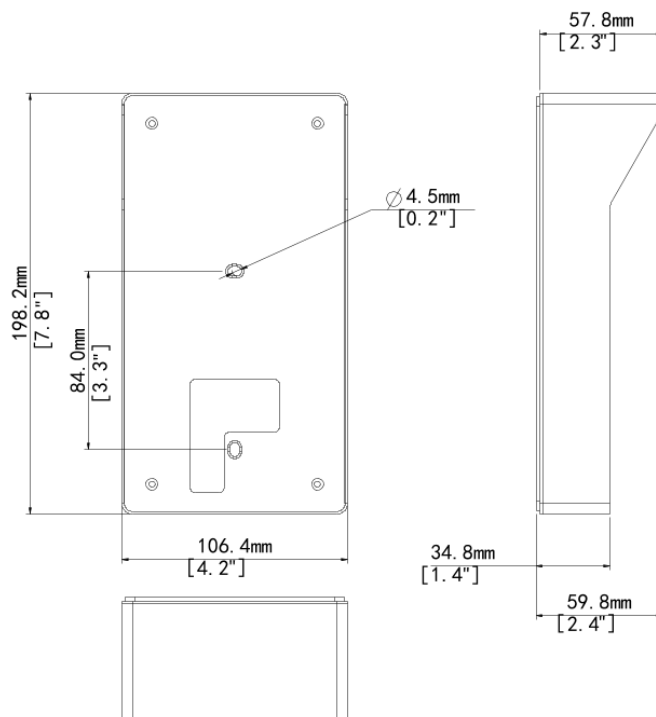
● EP-CS201-Z-NB

Model	EP-CS201-Z-NB
Hardware Specification	
Material	Metal
Dimensions (L x W x H)	106.4mm x 59.8mm x 198.2mm
Mount Method	Wall mount
Weight	408g
Specification Index	
Application Scenario	Outdoor

● EP-CSS201-Z-NB

Model	EP-CSS201-Z-NB
Hardware Specification	
Material	Metal + PC
Dimensions (L x W x H)	106.4mm x 72.7mm x 197.2mm
Mount Method	Recess mount
Weight	231g
Specification Index	
Application Scenario	Outdoor





Zhejiang Uniview Technologies Co., Ltd.

No. 369, Xietong Road, Xixing Sub-district, Binjiang District, Hangzhou City, 310051, Zhejiang Province, China

Email: overseasbusiness@uniview.com; globalsupport@uniview.com

<http://www.uniview.com>

©2024-2025 Zhejiang Uniview Technologies Co., Ltd. All rights reserved.

*Product specifications and availability are subject to change without notice.

*Despite our best efforts, technical or typographical errors may exist in this document. Uniview cannot be held responsible for any such errors and reserves the right to change the contents of this document without prior notice.