

Intelligent Edge Computing Server

ECS-50B-X(-HD) Series



Features

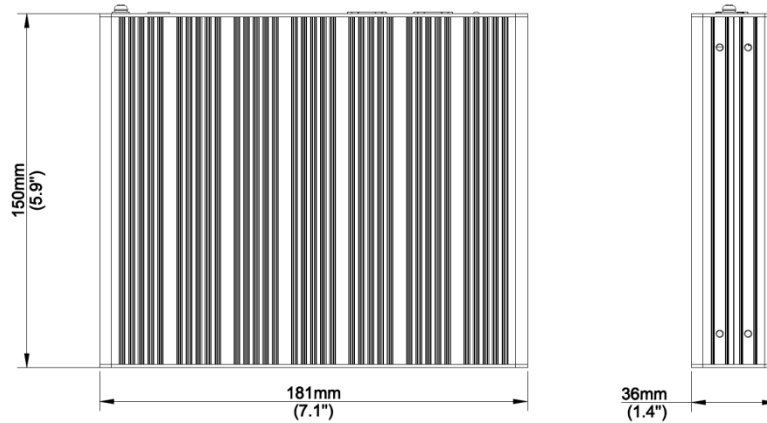
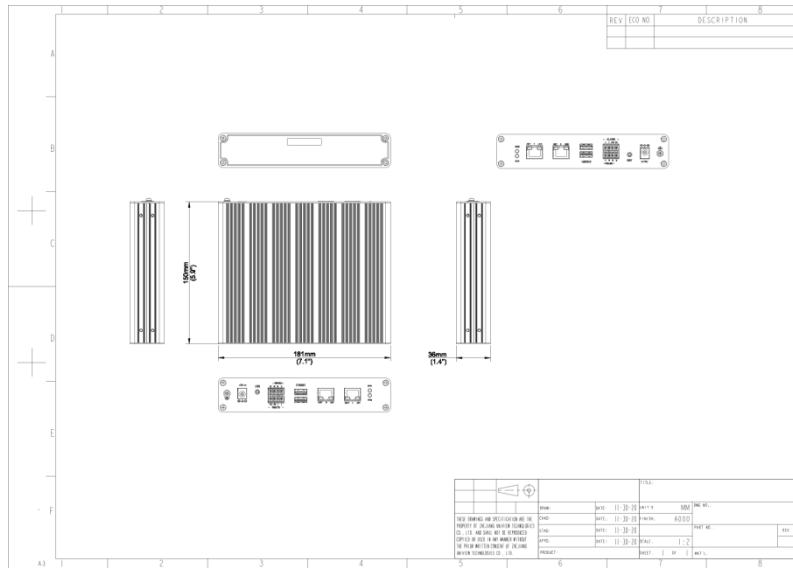
- Supports video stream based face detection and , monitoring with 5000 face images.
- Supports video stream based smart intrusion prevention (SIP).
- Supports video stream based behavior analysis, and provides , long stay detection, fall detection.
- Can connect 4/8-channel Onvif or RTSP compliant third-party IP cameras.
- Two 10M/100M/1000M network interfaces (RJ45).
- Supports browser-based access and control.
- Supports custom RESTful API and reporting real-time data to a specified server.

Specifications

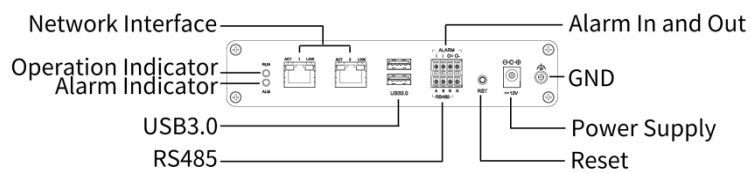
Decoding	Description
Decoding Format	Ultra 265,H.265,H.264
Decoding Capability	ECS-504B-X/ECS-504B-X-HD:4 x 8MP@30 (1080P is recommended) ECS-508B-X/ECS-508B-X-HD:8 x 8MP@30 (1080P is recommended)
Network	Description
Incoming Bandwidth	64Mbps
Outgoing Bandwidth	64Mbps
Smart	Description
Smart	Smart Intrusion Prevention (SIP);Behavior Analysis;(At same channel,only one samrt func tion can be enabled simultaneously)
Video stream based	ECS-504B-X/ECS-504B-X-HD:4-ch

	ECS-508B-X/ECS-508B-X-HD:8-ch
Face Picture Library	Up to 128 face picture libraries,with up to 5,000 face pictures in total
Video stream based SIP	ECS-504B-X/ECS-504B-X-HD:4-ch ECS-508B-X/ECS-508B-X-HD:8-ch
Video stream based behavior analysis	ECS-504B-X/ECS-504B-X-HD:4-ch ECS-508B-X/ECS-508B-X-HD:8-ch
Behavior Analysis Type	Long Stay Detection;Fall Detection
Capacity of Snapshot Records	ECS-504B-X/ECS-508B-X:NA ECS-504B-X-HD/ECS-508B-X-HD:2 millions records for face snapshot;2 millions records for behavior analysis and SIP
Hard Disk	Description
Capacity	ECS-504B-X/ECS-508B-X:NA ECS-504B-X-HD/ECS-508B-X-HD:Including 2.5" 1TB HDD
External Interface	Description
Network Interface	2 RJ45 10M/100M/1000M self-adaptive Ethernet Interface
USB	Rear panel: 2 x USB3.0
RS485	1
RS232	NA
Alarm In	2-ch
Alarm Out	1-ch
Power Supply	ECS-504B-X/ECS-508B-X:DC 12V/2A ECS-504B-X-HD/ECS-508B-X-HD:DC 12V/3A
Working Environment	Description
Working Temperature	-20° C ~ + 60° C (-4° F ~ +140° F)
Working Humidity	≤ 95% RH (non-condensing)
Power Consumption	ECS-504B-X/ECS-508B-X:≤ 24W (without HDD) ECS-504B-X-HD/ECS-508B-X-HD:≤ 36W (with HDD)
Dimensions	Description
Weight	ECS-504B-X/ECS-508B-X:≤ 1Kg (2.20lb) (without HDD) ECS-504B-X-HD/ECS-508B-X-HD:≤ 1.15Kg (2.54lb) (with HDD)
Dimensions	181.0mm(W) × 150.0mm(D) × 36.0mm(H)
Certification	Description
Certification	CE;FCC;RoHS;WEEE
CE	EN 55032,EN 61000-3-3,EN IEC 61000-3-2,EN 55035
FCC	Part15 Subpart B

Dimensions



Rear Panel



Zhejiang Uniview Technologies Co., Ltd.

No. 369, Xietong Road, Xixing Sub-district, Binjiang District, Hangzhou City, 310051, Zhejiang Province, China

Email: overseasbusiness@uniview.com; globalsupport@uniview.com

<http://www.uniview.com>

©2023-2024 Zhejiang Uniview Technologies Co., Ltd. All rights reserved.

*Product specifications and availability are subject to change without notice.

*Despite our best efforts, technical or typographical errors may exist in this document. Uniview cannot be held responsible for any such errors and reserves the right to change the contents of this document without prior notice.