

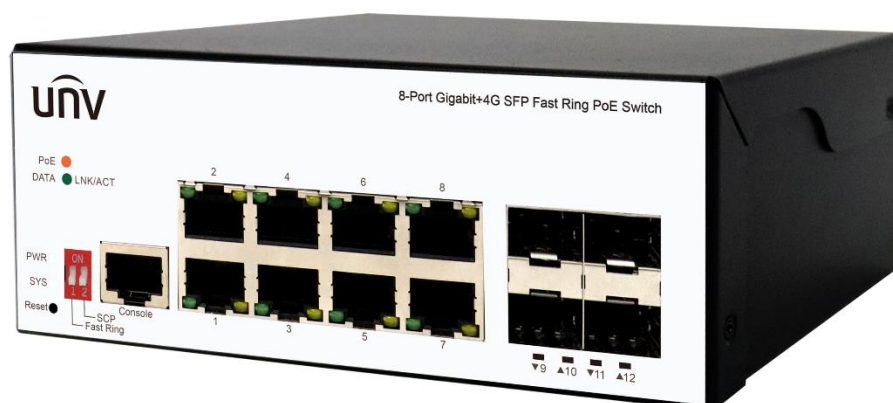
ISW5000-8GT4GP-POE-IN Harsh Fast Ring Managed PoE Switch

Product Overview

ISW5000-8GT4GP-PoE-IN is a managed Ring-network harsh PoE switch independently developed by Uniview. It has 8*10/100/1000Mbps adaptive RJ45 ports and 4*1000Mbps SFP fiber module expansion slots. 1-8 RJ45 ports all support PoE power supply, a single port up to 30W. Support static routing functions, provide perfect security, QoS, and plenty of VLAN function has ring network function, can form a ring network, Switch between by hand in hand form a ring network topology, the redundancy, high reliability characteristics can make in a ring online link disconnected all the way, will not affect the forwarding of data on the network.

The device adopts no fan, low power consumption design, has the advantages of easy to use, compact and beautiful, simple installation. The product is designed to meet Ethernet standards, with lightning protection, static protection mechanism, operating temperature range of -20°C to 60°C, stable performance, safety and reliability, can be widely used in intelligent transportation, telecommunications, security, financial securities, customs and other broadband data transmission fields.

Product Picture



Key Features

- PoE supports IEEE 802.3af/at standards and provides a maximum output of 30W for each port;
- Data transmission and power supply distance up to 100 meters;
- Supports IEEE802.3x full-duplex flow control and Backpressure half-duplex flow control;
- Panel indicators monitor working status and assist in fault analysis;
- Supports one-click ring network and one-click storm suppression, featuring redundancy and high reliability;
- Highly reliable design, supporting traditional STP/MSTP/RSTP Layer 2 link protection technology;
- Support static convergence and dynamic convergence (LACP) 2 convergence modes, effectively increase the link bandwidth, improve the reliability of the link, and at the same time can achieve load balancing, link backup;
- Flexible and convenient management and maintenance Supports various management modes, such as Console, Telnet, and SSH;
- Supports WEB management, which is simple and efficient, and facilitates installation and debugging by engineering and maintenance personnel;
- Supports file upload and download management through TFTP;

Specifications

Hardware Specification

Model	ISW5000-8GT4GP-PoE-IN
Standard	IEEE 802.3, IEEE 802.3u, IEEE 802.3ab, IEEE 802.3z, IEEE 802.3x, IEEE 802.1X, IEEE 802.1q, IEEE 802.1p, IEEE 802.1d, IEEE 802.1w, IEEE 802.3ad, IEEE802.3af, IEEE802.3at
Interface	8*10/100/1000Mbps RJ45 Ports 4*1000Mbps SFP Slots 1 Console Port
Indicator	PWR, LNK/ACT, PoE,SYS
Network Media	10BASE-T: UTP category 3,4,5 cable (≤100m) 100BASE-TX: UTP category 5, 5e cable (≤100m) 1000BASE-T: UTP category 5e, 5 cable (≤100m) 1000BASE-X: MMF, SMF
MAC Address Table	8K, Auto-learning, Auto-updating
Jumbo Frame	9KBytes
Packet Buffer	4.1M bit
Transfer Mode	Store-and-forward
Packet Forward Speed	17.86Mpps

Switching Capacity	24Gbps
Dimensions(L*W*H)	145*109*62.3mm ,Black iron shell
Fan Quantity	Fanless
PoE Power Budget	120W
PoE Port	Port 1~8
PoE Power On RJ45	Mode A 1/2 (+) , 3/6 (-)
PoE Power Output	30W (MAX)
Input Power Supply	DC:48-57V
Max.Power	135W
Operating Temperature	-20°C ~ 60 °C
Storage Temperature	-40 °C ~ 80 °C
Operating Humidity	5% ~ 95% non-condensing
Storage Humidity	0% ~ 95% non-condensing
Surge Protection	Differential mode ±2KV Common mode ±4KV
MTBF	>100000 hour
Electrostatic Standard	Contact ±6KV,Air ±8KV

Software Specification

Layer 2	MAC	MAC Aging Time
		MAC Filter
		MAC Notification
	Basic Management	Console/Telnet/SSH
		Http/Https、SSL/TLS
		FTP/TFTP
		Syslog
		SNMP(v1/v2c/v3)、SNMP Trap
		SNTP/NTP
		CPU protect
		Software/Hardware watchdog
		Firmware Upgrade/Backup
		Ping/Traceroute

Port Config	Bandwidth Control
	Flow Control
	EEE
	MTU
	CFM(802.1ag)
	EFM OAM(802.3ah)
	DDM
	Storm Control
	Port Isolation
	Port Security
	Virtual Cable Test
	ULDP
	Discovery
LLDP-MED	
Link Aggregation	Static
	LACP(802.3ad)
	Load Balance(src-mac/dst-mac/src-ip/dst-ip)
	Max groups and ports per group
VLAN	VLAN(802.1Q 4K)
	Access/Trunk/Hybrid
	Private VLAN
	VLAN Filter
	MAC-based VLAN
	Protocol-based VLAN
	IP Subnet-based VLAN
	Voice VLAN
	GVRP/GMRP
	QinQ/Selective-QinQ/Flexible QinQ
	VLAN Translation/N:1 VLAN Translation
Guest VLAN	
Network Loop Detection	Loopback Detection

	Spanning Tree	ERPS	
		STP/RSTP/MSTP	
		MSTP Support 64 instance	
		BPDU Guard/Root Guard/BPDU Tunnel	
	ARP	Static ARP	
		ARP Scanning Prevention	
		ARP Spoofing Prevention	
		ARP Guard	
		Gratuitous ARP	
		Dynamic ARP Inspection	
		ARP Quantity Control	
	IPv4 Related Function	ICMP	Anti ICMP Attack
			ICMP Rate Limit
ICMP Unreachable Drop			
IP Forward		Static Route	
		Route Aggregation	
Multicast VALN		Multicast VALN	
IGMP		IGMP SNOOPING V1/V2/V3	
		Fast Leave	
		IGMP Proxy	
DHCP		DHCP Server	
		DHCPv4 Client/BOOTP	
		DHCPv4 Relay	
		DHCPv4 Snooping	
		DHCPv4 Option 82/43/60/61/67	
IPv6 Related Function		IPv6 Basic	IPv6 ND Snooping
	DHCPv6	DHCPv6 Relay	
		DHCPv6 Snooping	
		IPv6 SAVI	
		Security RA	
		DHCPv6 Server	

	IPv6 Unicast Routing	Static Route
	IPv6 Multicast Routing	MLD v1/V2 Snooping
	IPv6 Features	SNMP over IPv6 Support
		HTTP over IPv6 Support
		SSH over IPv6 Support
		DNS over IPv6 Support
		IPv6 ping/traceroute Support
		IPv6 Telnet Support
		IPv6 Radius+ Support
		IPv6 Tacacs+ Support
		IPv6 SNTP/NTP Support
		IPv6 FTP/TFTP Support
		IPv6 IPSec Support
	IPv6 ACL	
QoS(Quality Of Service)	Basic	Trust COS/DSCP
		Trust Port
	Scheduling	SP
		WRR
		WDRR
	PolicyMap Stream	Based on VLAN
		Based on COS/DSCP
		Aggregate PolicyMap
		Ingress PolicyMap
	Policing	CAR Stream Shaping(leak algorithm)
		Ingress Policing
	Rewrite	COS/802.1p Priority
		IP Precedence
		IPv4 DSCP/IPv6 DSCP
		drop-precedence
		internal-priority
		Ingress/Egress Rewrite

	Queuing	DSCP to DSCP mapping
		DSCP to DP mapping
		DSCP to Queue mapping
		COS to DP mapping
		COS to Queue mapping
ACL	IP-ACL	SIP/DIP
		IP Protocol
		IP Priority(DSCP,TOS, Precedence)
		TCP,UDP src,dst Port
	MAC-ACL	SRC/DST MAC
		VLAN
		COS
		Tag/Untag
	IP-MAC ACL	MAC-ACL and IP-ACL
	User-defined ACL	Base on user defined profile
	ACL Features	Based on time period ACL
		ACL on VLAN
		Based on ACL Stream
	Security	802.1x
Support EAPoR		
MAC based Authentication		
Guest VLAN		
MAB		Based on Port Authentication
		Based on MAC Authentication
MAC Address Count Limit		Based on Port
		Based on VLAN
IP Address Count Limit		Based on Port
		Based on VLAN
Access Management		Based on source mac and IP address
Deny DoS Attack		TCP Flag
		TCP Fragment

		IP Segment
		ICMP
	TACACS+	Standard Support
	Radius	Standard Support
		Client, Support MD5
SSL	Openssl 1.1.0	
Redundancy Related Function	MRPP	Compatible ERRP
	ULPP	Uplink Protection Protocol
		Smart Link/Monitor Link
ULSM	Uplink State Monitor	
Flow Monitor Function	Mirror	Support one to one, multi to one
		Port based mirror, support ingress, egress, and both
		CPU based mirror
		Flow based mirror
		RSPAN
PoE	PoE Management	ON/OFF Config
		Alive Checking for PD
		7/24 On/Off Scheduling

Zhejiang Uniview Technologies Co., Ltd.

No. 369, Xietong Road, Xixing Sub-district, Binjiang District, Hangzhou City, Zhejiang Province, China

Email: overseasbusiness@uniview.com; globalsupport@uniview.com

<http://www.uniview.com>

©2023 Zhejiang Uniview Technologies Co., Ltd. All rights reserved.

Product specifications and availability are subject to change without notice.